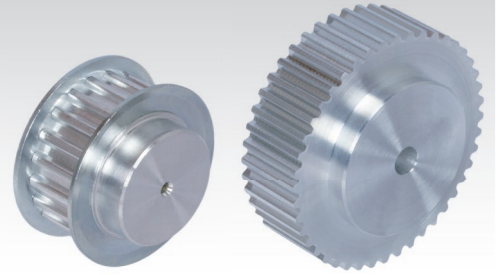
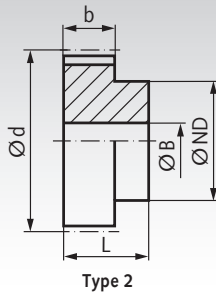
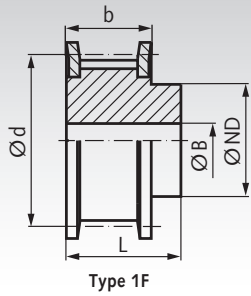


T Pulleys, Pitch 5 mm from Aluminium



Material: Aluminium similar to EN AW2017A. Flanges zinc-plated steel.

Ordering Details: e.g.: Product No. 162 210 00, Pulley, Pitch T5, 10 Teeth, Timing Belt Width 10 mm

Profile T 5, Timing Belt Width 10 mm

Product No. Belt Width 10 mm	Type	Number of teeth	Type	Outside Ø		d mm	ND mm	b mm	L mm	Pilot Hole B mm	Weight g
				Pulley mm	Flange mm						
162 210 00	21 T5/10-2	10	1F	15,08	19,5	15,92	8	15	21	-	12
162 211 00	21 T5/11-2	11	1F	16,67	22,0	17,51	10	15	21	-	14
162 212 00	21 T5/12-2	12	1F	18,26	23,0	19,10	10	15	21	-	16
162 213 00	21 T5/13-2	13	1F	19,85	25,0	20,69	12	15	21	-	18
162 214 00	21 T5/14-2	14	1F	21,44	25,0	22,28	13	15	21	-	19
162 215 00	21 T5/15-2	15	1F	23,03	28,0	23,87	16	15	21	-	21
162 216 00	21 T5/16-2	16	1F	24,62	32,0	25,46	18	15	21	-	25
162 218 00	21 T5/18-2	18	1F	27,81	32,0	28,65	20	15	21	-	31
162 219 00	21 T5/19-2	19	1F	29,40	36,0	30,24	22	15	21	-	36
162 220 00	21 T5/20-2	20	1F	30,99	36,0	31,83	23	15	21	-	38
162 222 00	21 T5/22-2	22	1F	34,17	38,0	35,01	24	15	21	-	46
162 224 00	21 T5/24-2	24	1F	37,36	42,0	38,20	26	15	21	-	54
162 225 00	21 T5/25-2	25	1F	38,95	44,0	39,79	26	15	21	-	58
162 226 00	21 T5/26-2	26	1F	40,54	44,0	41,38	26	15	21	-	62
162 227 00	21 T5/27-2	27	1F	42,13	48,0	42,97	30	15	21	8	64
162 228 00	21 T5/28-2	28	1F	43,72	48,0	44,56	32	15	21	8	71
162 230 00	21 T5/30-2	30	1F	46,91	51,0	47,75	34	15	21	8	75
162 232 00	21 T5/32-2	32	1F	50,09	54,0	50,93	38	15	21	8	88
162 236 00	21 T5/36-2	36	1F	56,46	64,0	57,30	38	15	21	8	114
162 240 00	21 T5/40-2	40	1F	62,82	66,0	63,66	40	15	21	8	138
162 242 00	21 T5/42-2	42	1F	66,01	71,0	66,85	40	15	21	8	180
162 244 00	21 T5/44-0	44	2	69,19	-	70,03	45	15	21	8	185
162 248 00	21 T5/48-0	48	2	75,55	-	76,39	50	15	21	8	200
162 260 00	21 T5/60-0	60	2	94,65	-	95,49	65	15	21	8	307
162 272 00	21 T5/72-0	72	2	113,75	-	114,59	80	15	21	10	
162 284 00	21 T5/84-0	84	2	132,85	-	133,69	80	15	21	10	
162 296 00	21 T5/96-0	96	2	151,95	-	152,79	90	15	21	10	

Profile T 5, Timing Belt Width 16 mm

Product No. Belt Width 16 mm	Type	Number of teeth	Type	Outside Ø		d mm	ND mm	b mm	L mm	Pilot Hole B mm	Weight g
				Pulley mm	Flange mm						
162 310 00	27 T5/10-2	10	1F	15,08	19,5	15,92	8	21	27	-	16
162 311 00	27 T5/11-2	11	1F	16,67	22,0	17,51	10	21	27	-	19
162 312 00	27 T5/12-2	12	1F	18,26	23,0	19,10	10	21	27	-	22
162 313 00	27 T5/13-2	13	1F	19,85	25,0	20,69	12	21	27	-	24
162 314 00	27 T5/14-2	14	1F	21,44	25,0	22,28	13	21	27	-	26
162 315 00	27 T5/15-2	15	1F	23,03	28,0	23,87	16	21	27	-	29
162 316 00	27 T5/16-2	16	1F	24,62	32,0	25,46	18	21	27	-	35
162 318 00	27 T5/18-2	18	1F	27,81	32,0	28,65	20	21	27	-	43
162 319 00	27 T5/19-2	19	1F	29,40	36,0	30,24	22	21	27	-	49
162 320 00	27 T5/20-2	20	1F	30,99	36,0	31,83	23	21	27	-	53
162 322 00	27 T5/22-2	22	1F	34,17	38,0	35,01	24	21	27	-	54
162 324 00	27 T5/24-2	24	1F	37,36	42,0	38,20	26	21	27	-	76
162 325 00	27 T5/25-2	25	1F	38,95	44,0	39,79	26	21	27	-	81
162 326 00	27 T5/26-2	26	1F	40,54	44,0	41,38	26	21	27	-	85
162 327 00	27 T5/27-2	27	1F	42,13	48,0	42,97	30	21	27	8	90
162 328 00	27 T5/28-2	28	1F	43,72	48,0	44,56	32	21	27	8	92
162 330 00	27 T5/30-2	30	1F	46,91	51,0	47,75	34	21	27	8	105
162 332 00	27 T5/32-2	32	1F	50,09	54,0	50,93	38	21	27	8	123
162 336 00	27 T5/36-2	36	1F	56,46	64,0	57,30	38	21	27	8	160
162 340 00	27 T5/40-2	40	1F	62,82	66,0	63,66	40	21	27	8	193
162 342 00	27 T5/42-2	42	1F	66,01	71,0	66,85	40	21	27	8	205
162 344 00	27 T5/44-0	44	2	69,19	-	70,03	45	21	27	8	228
162 348 00	27 T5/48-0	48	2	75,55	-	76,39	50	21	27	8	280
162 360 00	27 T5/60-0	60	2	94,65	-	95,49	65	21	27	8	430
162 372 00	27 T5/72-0	72	2	113,75	-	114,59	80	21	27	10	
162 384 00	27 T5/84-0	84	2	132,85	-	133,69	80	21	27	10	
162 396 00	27 T5/96-0	96	2	151,95	-	152,79	90	21	27	10	