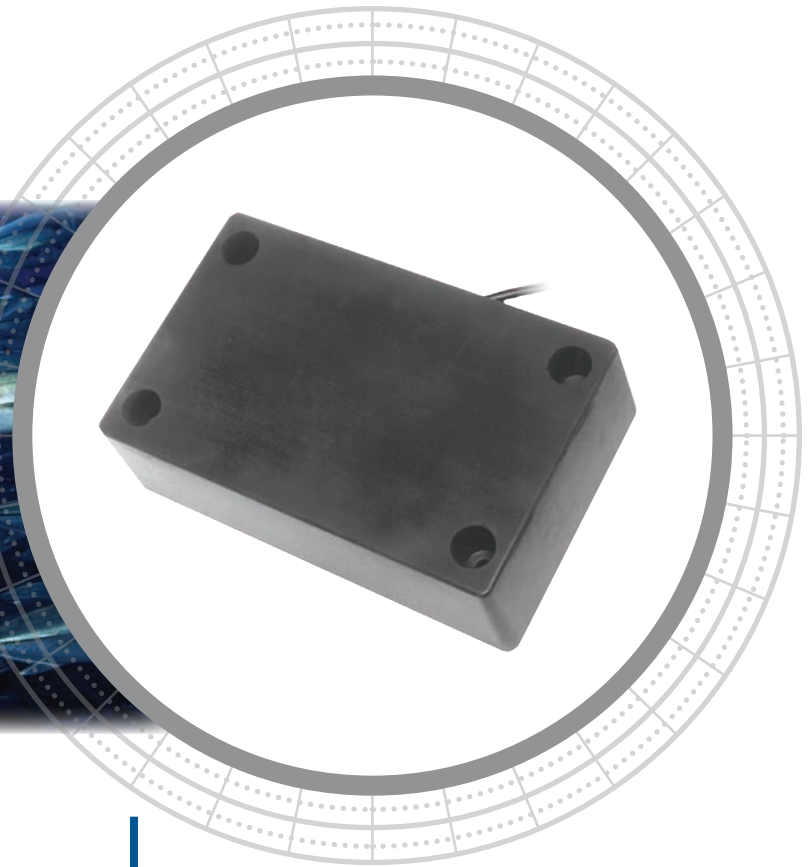
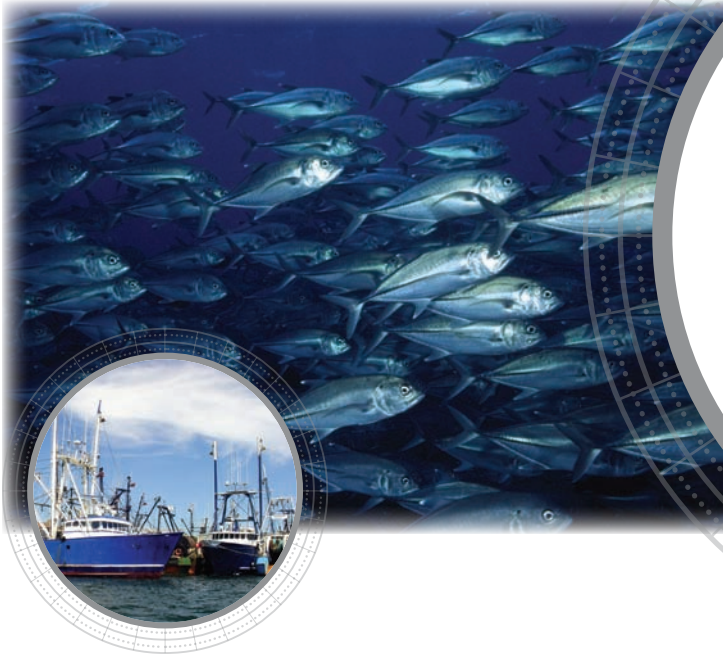


# R158



## Unparalleled Deep-Water Fishing

The R158 holds 34, 50 kHz elements and can handle up to 4 kW of power. The high power level and highly efficient arrays allow unparalleled, deep-water, fish detection.

## Options

- Impedance to customer specifications using matching transformer
- Available as special order unit with 50 kHz array

## Tank-Mount 4 kW


## Applications

- Mid-size and large, commercial-fishing vessels

## Features

- Extremely, low-ringing array allows fishermen to easily discriminate between bottom structure and target fish
- Narrow beam provides excellent, bottom detail
- Stuffing tubes are available to form a watertight conduit for cable routing and are available in a variety of materials to match all hull types
- All mounting hardware included

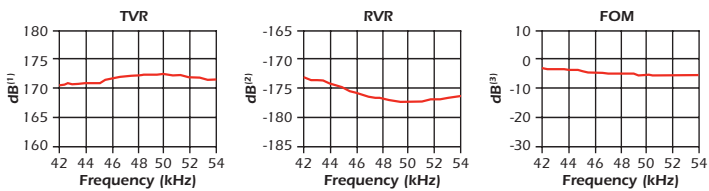
## Technical Information

Frequencies	Configuration	Beamwidth [@-3 dB]	RMS Power (W)	FOM (dB)	Q	Series Impedance (R-jX)
50 kHz-Q1q		6° x 10°	4 kW	-3	6	90-j0(Ω)

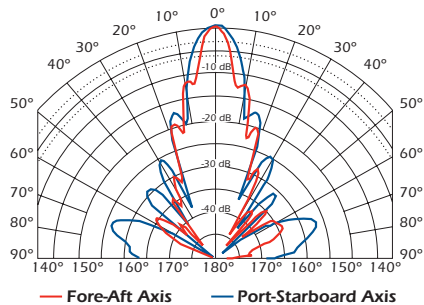
### Technical Data—50 kHz-Q1q

TVR in dB re 1 μPa/Volt at 1 m

RVR in dB re 1 Volt/μPa



### Directivity Pattern—50 kHz-Q1q



### SPECIFICATIONS

**Weight:** 16 kg (35 lb)

**Acoustic Window:** Epoxy

**Material Housing:** Cast epoxy resin

### DIMENSIONS

