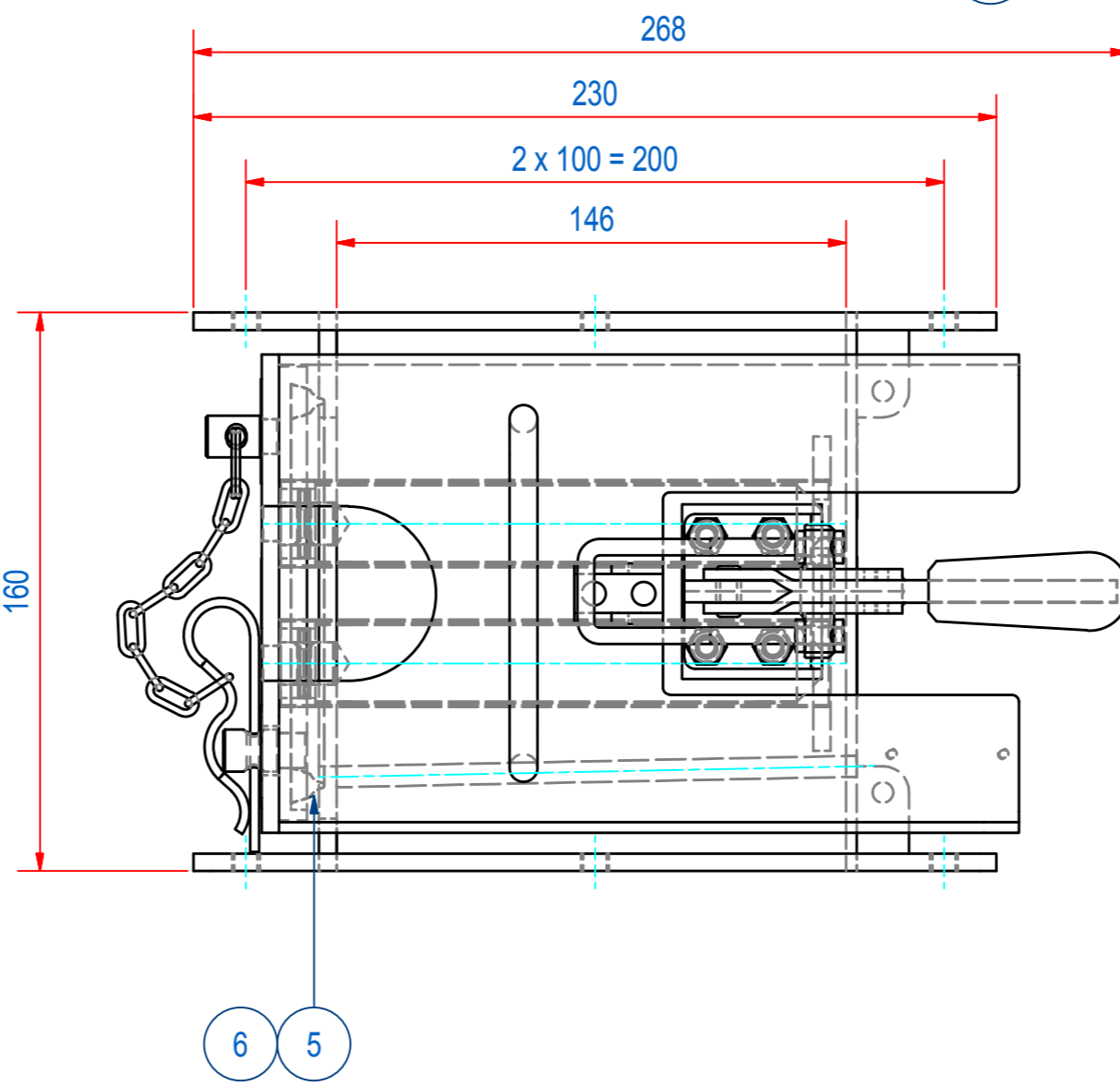
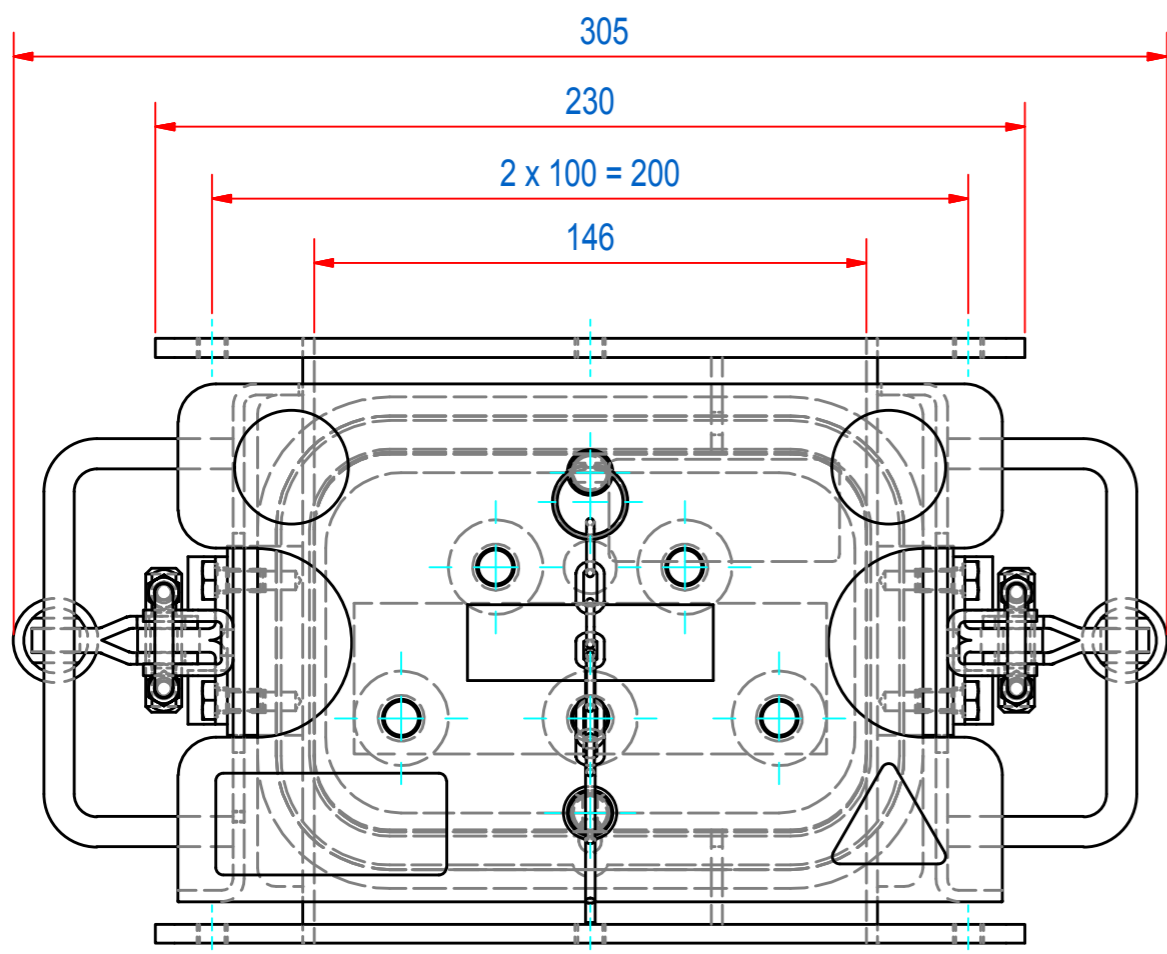
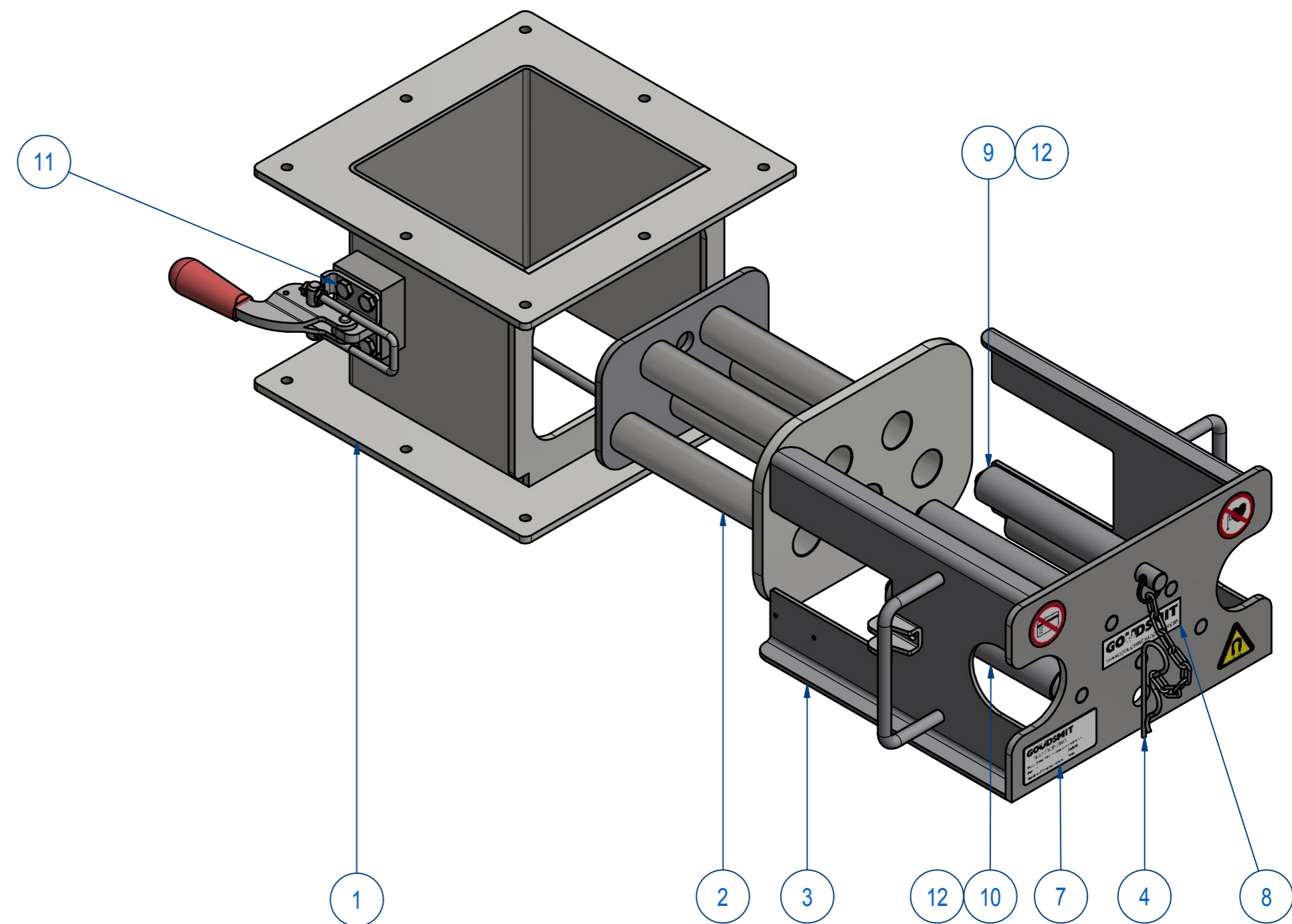
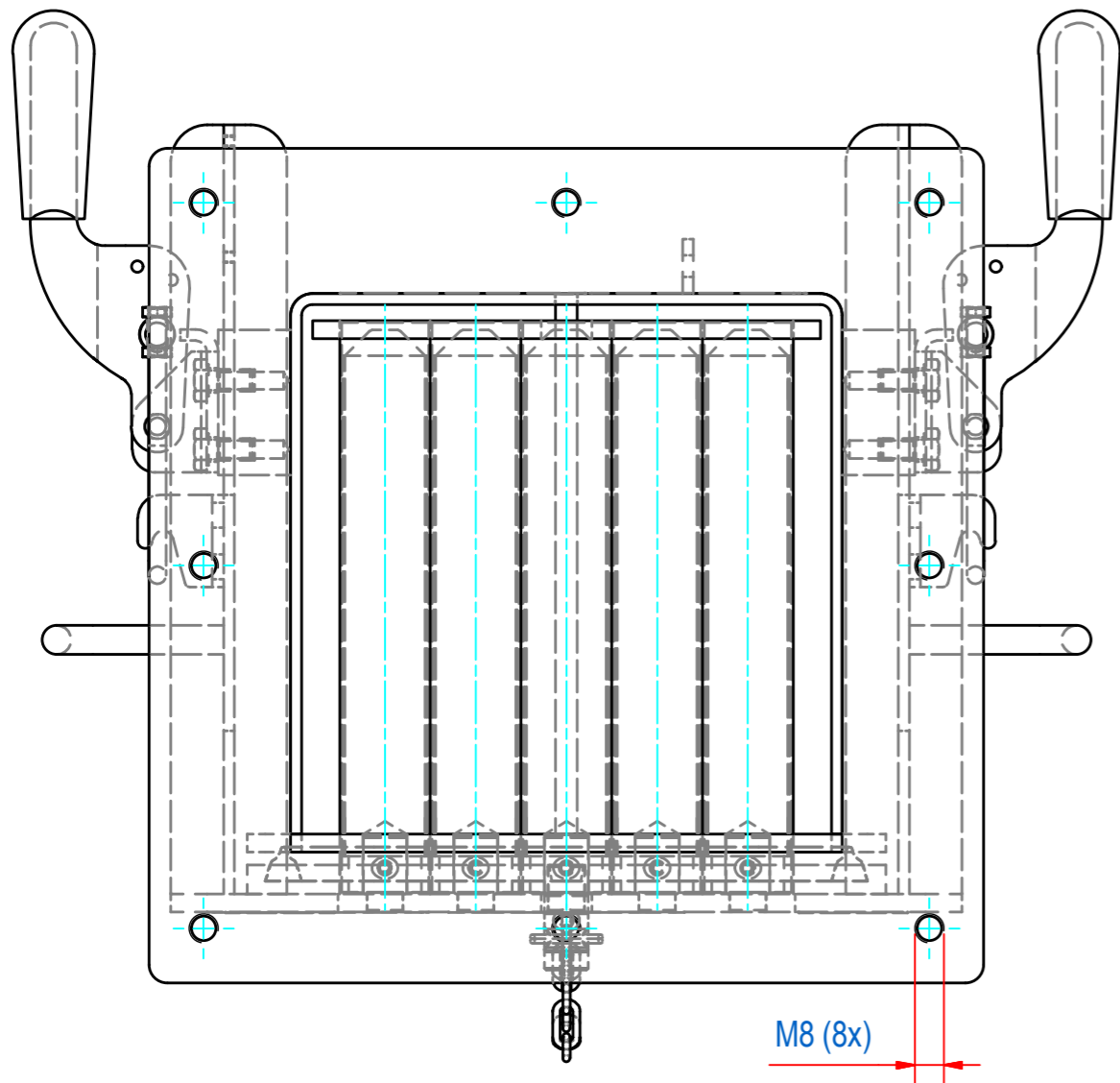


REV	DATE	BY	DESCRIPTION
-	25-11-2013	CR	NEW REVISION VAULT, NOTHING CHANGED, OLD REV WAS B
A	9-5-2018	CR	TYPE PLATE AND WARNING STICKERS ADDED FRONT CHANGED: E0074920 WAS A110096



ITEM	QTY	PART NUMBER	DESCRIPTION	Dimensions
12	5	72.9900002	PIN, S SLOTTED 3 x 20 - A2	3 x 20
11	8	50.1306012	BOLT, HEX M6 x 12 - A4	M6 x 12
10	3	SBAME100000-155	BAR-N-23-155-25-CPC-NW-B	
9	2	SBAME100009-155	BAR-N-23-155-25-CPC-SH-B	
8	1	E0092951	STICKERS FOR SECF	
7	2	E0086350	TYPE PLATE SECF	
6	1	E0010349	GASKET CF150 SILICONE EC1935	
5	1	E0010348	GASKET CF150 SILICONE EC1935	
4	1	M15489	CF000 LOCKER WITH CHAIN "SAFE"	
3	1	E0074920	FRONT CF1515 LONGER	
2	1	M79825	CF1515 EXTRACTOR 2+3 BRAZING	
1	1	M80739	WELD ASSY HOUSE CF1515	

RAW MAT.	QTY	MAT. NUMBER	MAT. DESCRIPTION	LENGTH (mm)	WIDTH (mm)
	1				

Sheet: A2	Extra info:	General tolerance: ISO 2768 - mK
Drawn: BS	Weight (kg): 12	Drawn according: ISO268; ISO1101; ISO2553
Date: 5-9-2014		Status: Standard
Spare part: False		Customer reference number:
Quick search: CF150NB	GOUDSMIT MAGNETIC SYSTEMS	File number: SECF150538 Rev: A
Description: SECF-B-1515-05E-N-F5m-B-B-B	© All rights reserved. Reproduction is not permitted without written permission of GOUDSMIT Magnetic Systems BV	Part number: SECF150538 Rev: A