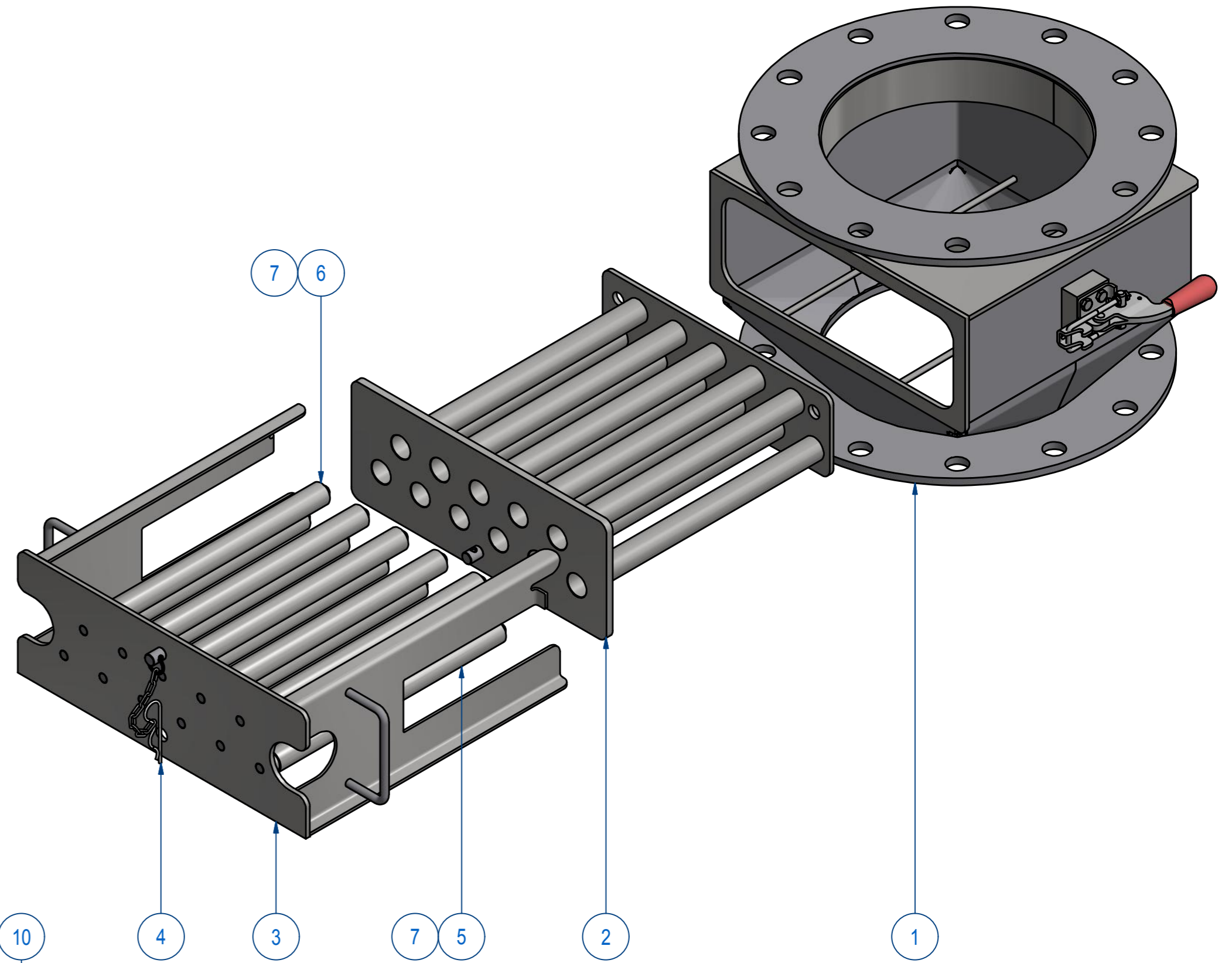
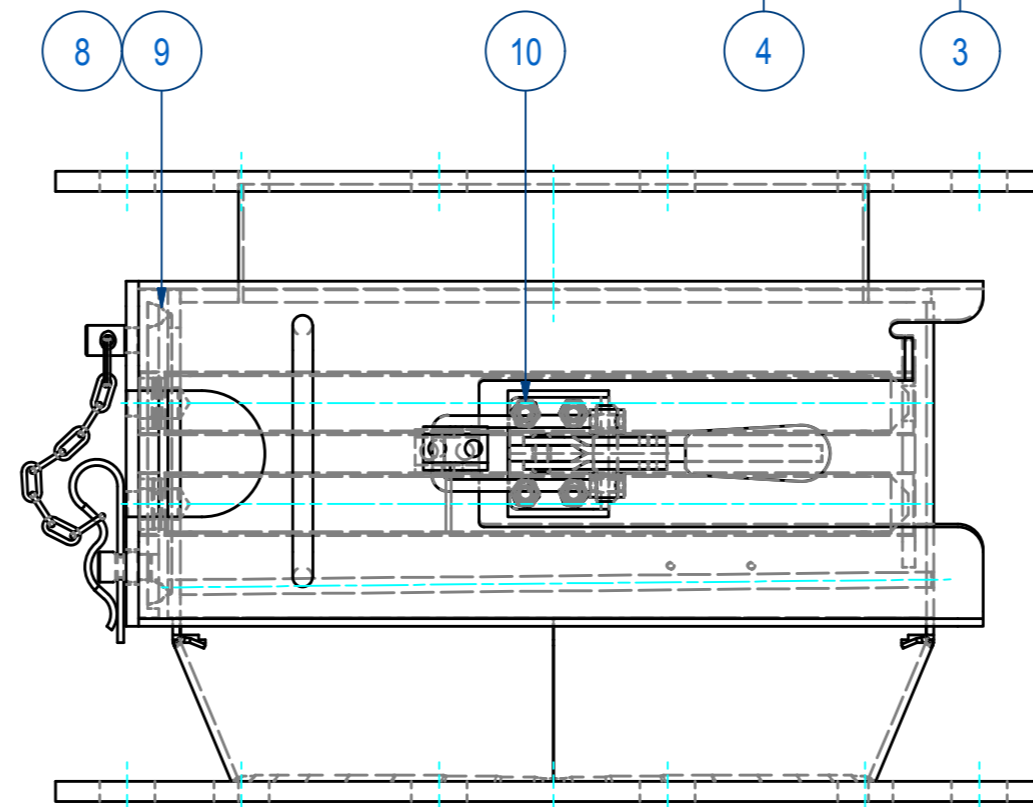
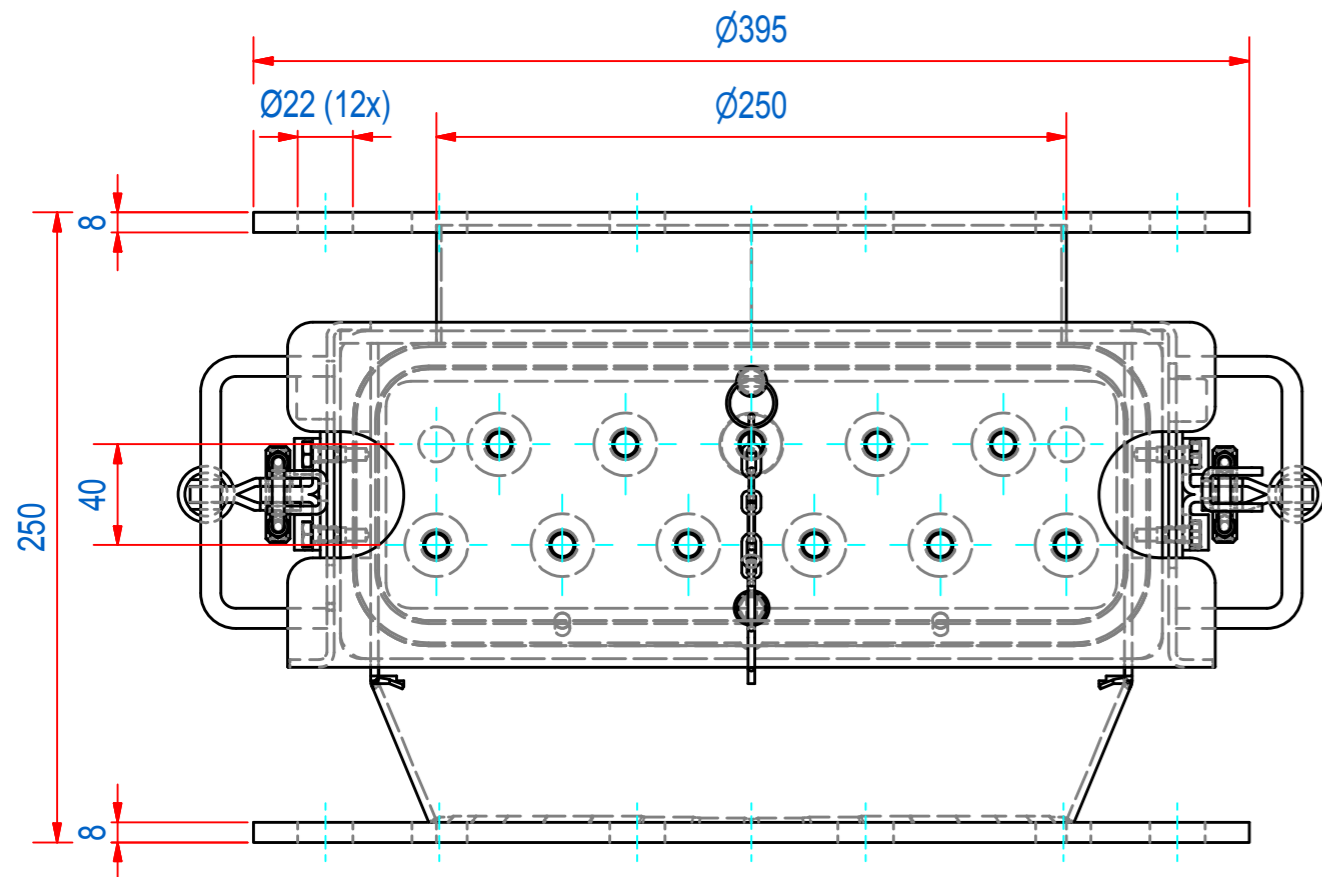
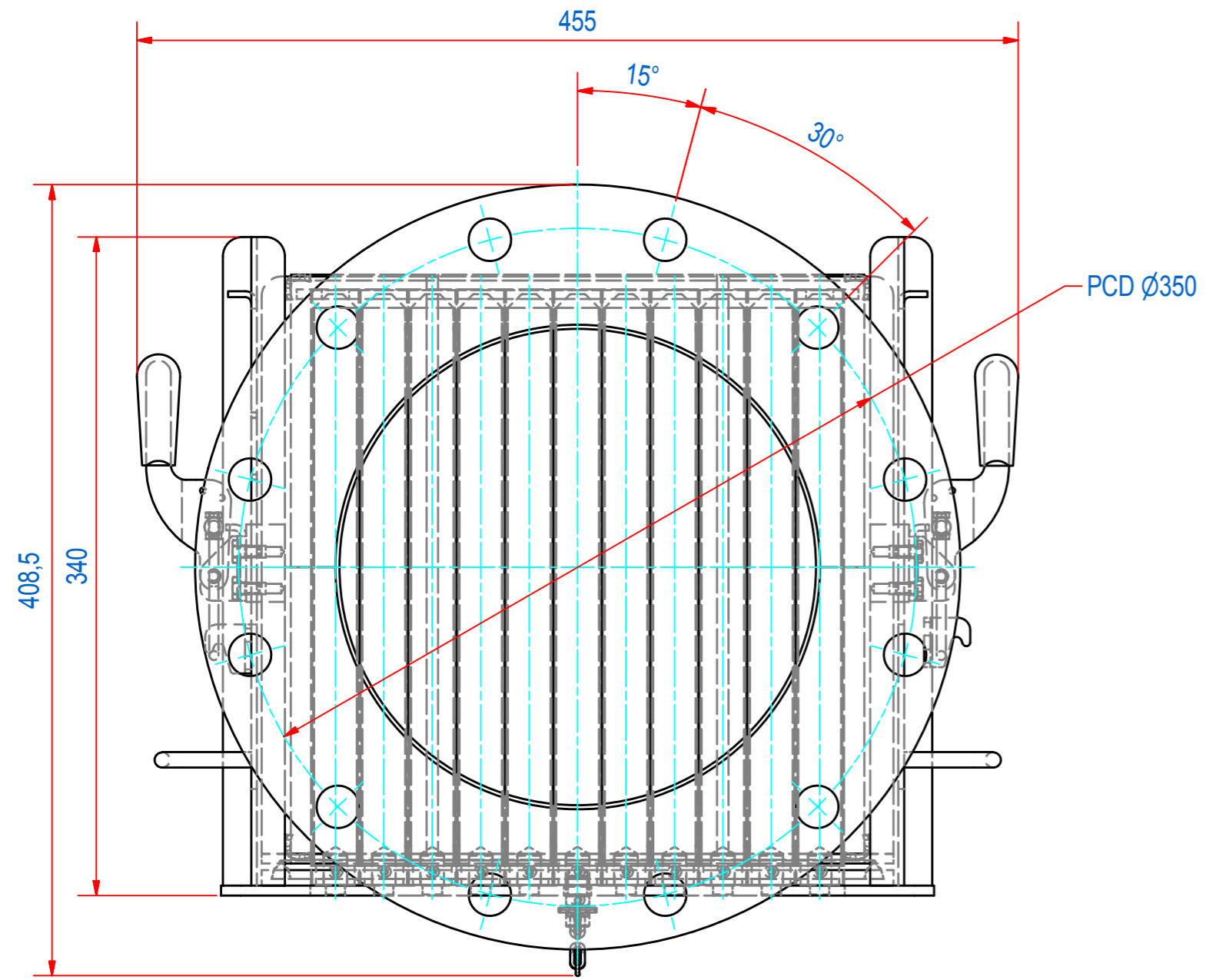


| DOC.NR. | REV | DATE | BY | DESCRIPTION |
|------------|-----|----------|----|--|
| SECF250638 | - | 2-7-2015 | CR | NEW REVISION VAULT, NOTHING CHANGED, OLD REV WAS G |
| SECF250638 | A | 2-7-2015 | CR | NOTHING CHANGED |
| SECF250638 | B | 2-7-2015 | CR | ITEM 9 AND 10 CHANGED |



| ITEM | QTY | PART NUMBER | DESCRIPTION | Dimensions |
|------|-----|-----------------|--------------------------------|------------|
| 10 | 8 | 50.1306010 | BOLT, HEX M6 x 10-A4 | M6 x 10 |
| 9 | 1 | E0022628 | GASKET CF250 SILICONE EC1935 | |
| 8 | 1 | E0022626 | GASKET CF250 SILICONE EC1935 | |
| 7 | 11 | 72.9900002 | PIN, S SLOTTED 3 x 20 - A2 | 3 x 20 |
| 6 | 5 | SBAME100009-305 | BAR-N-23-305-25-CPC-NW-B | |
| 5 | 6 | SBAME100000-305 | BAR-N-23-305-25-CPC-NH-B | |
| 4 | 1 | M15489 | CF000 LOCKER WITH CHAIN "SAFE" | |
| 3 | 1 | A250178 | FRONT CF250 SAFE | |
| 2 | 1 | A250375 | EXTRACTOR WELD 5+6 CF3030 | |
| 1 | 1 | M15766 | WELD ASSY HOUSE CF250 316L | |

| RAW MAT. | Quantity | Material Number | Material Description | Length (mm) | Width (mm) |
|----------|----------|-----------------|----------------------|-------------|------------|
| | 1 | | | | |

| | | |
|--|-------------------|---|
| Sheet: A2 | Extra info: | General tolerance: ISO 2768 - mK |
| Drawn: CR | Weight (kg): 35,7 | Drawn according: ISO268; ISO1101; ISO2553 |
| Date: 25-7-2014 | | Status: Standard |
| Spare part: False | | Customer reference number: |
| Quick search: CF250NB | | Document number: SECF250638 |
| Description: SECF-B-D250-11E-N-F1E-W-B-B | | Doc.Rev: B |
| | | Part number: SECF250638 |
| | | Rev: B |

GOUDSMIT
MAGNETIC SYSTEMS

© All rights reserved. Reproduction is not permitted without written permission of GOUDSMIT Magnetic Systems BV