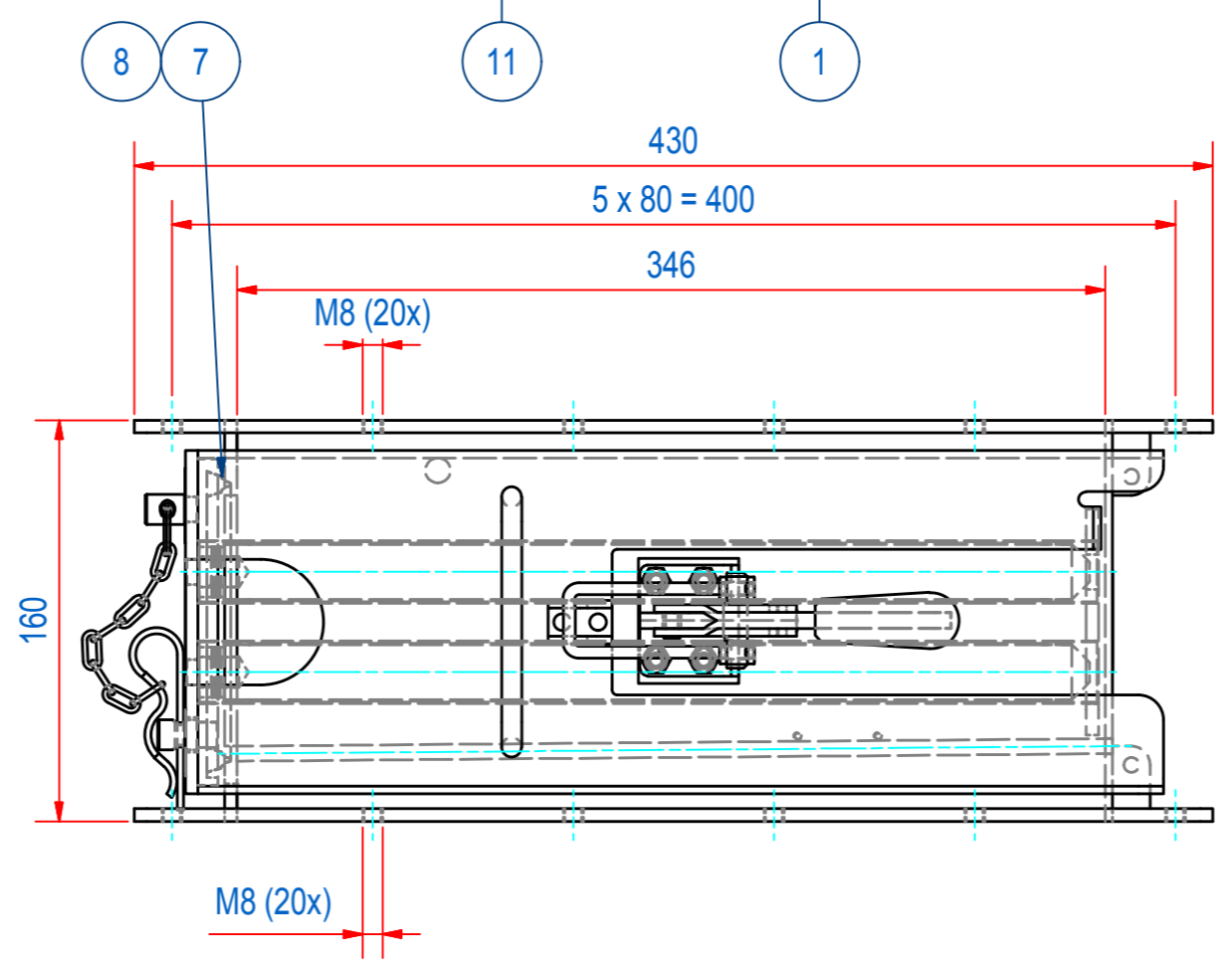
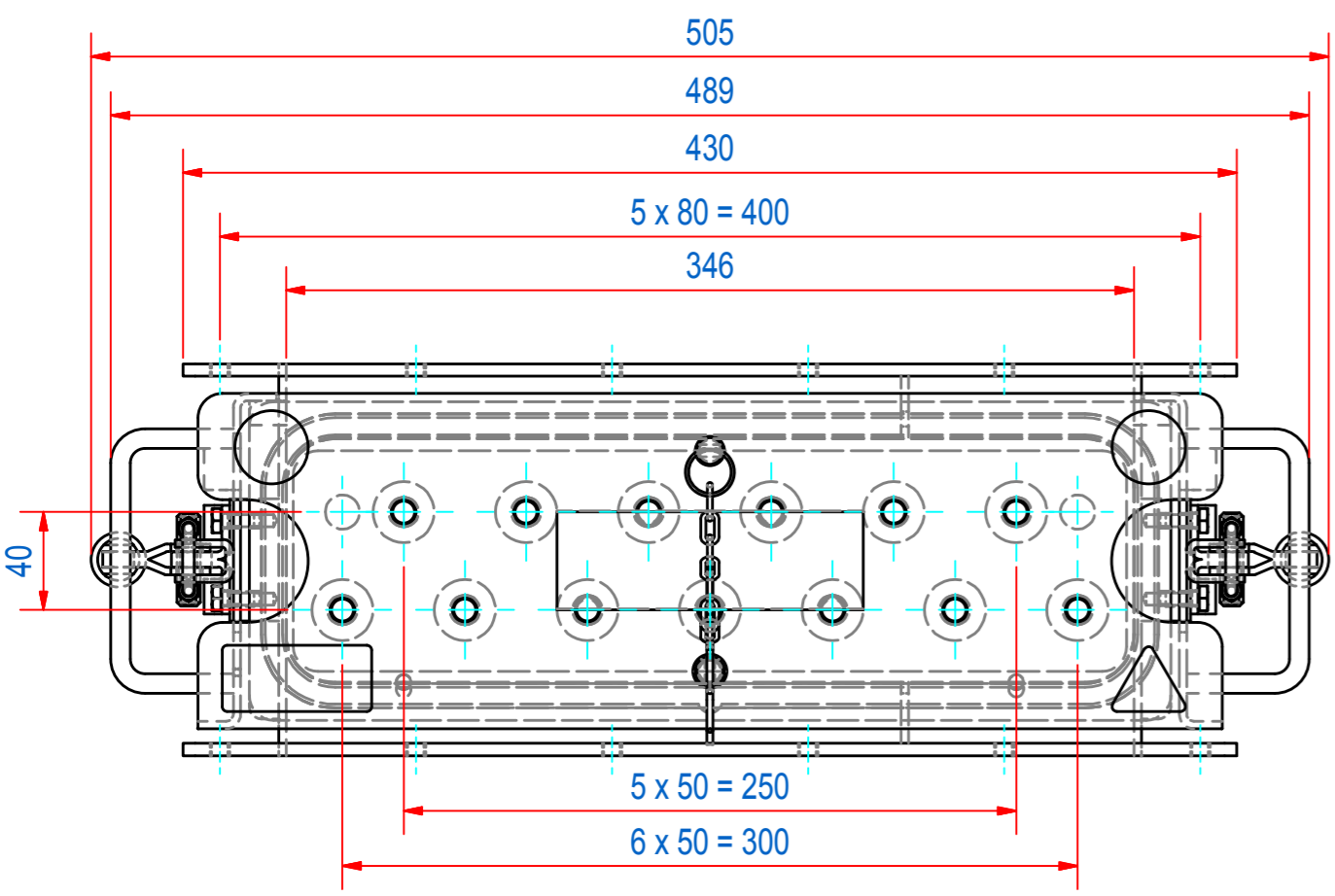
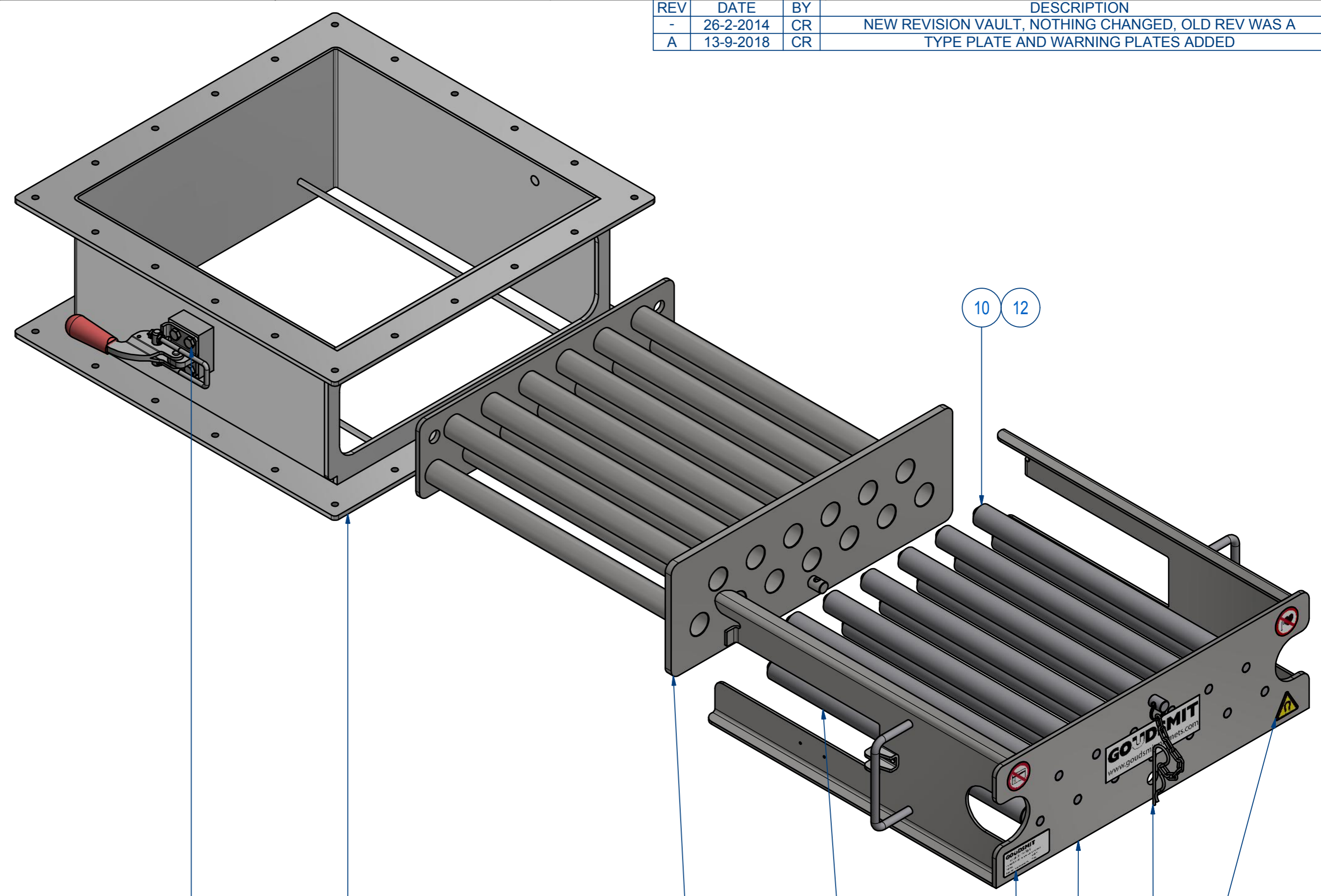
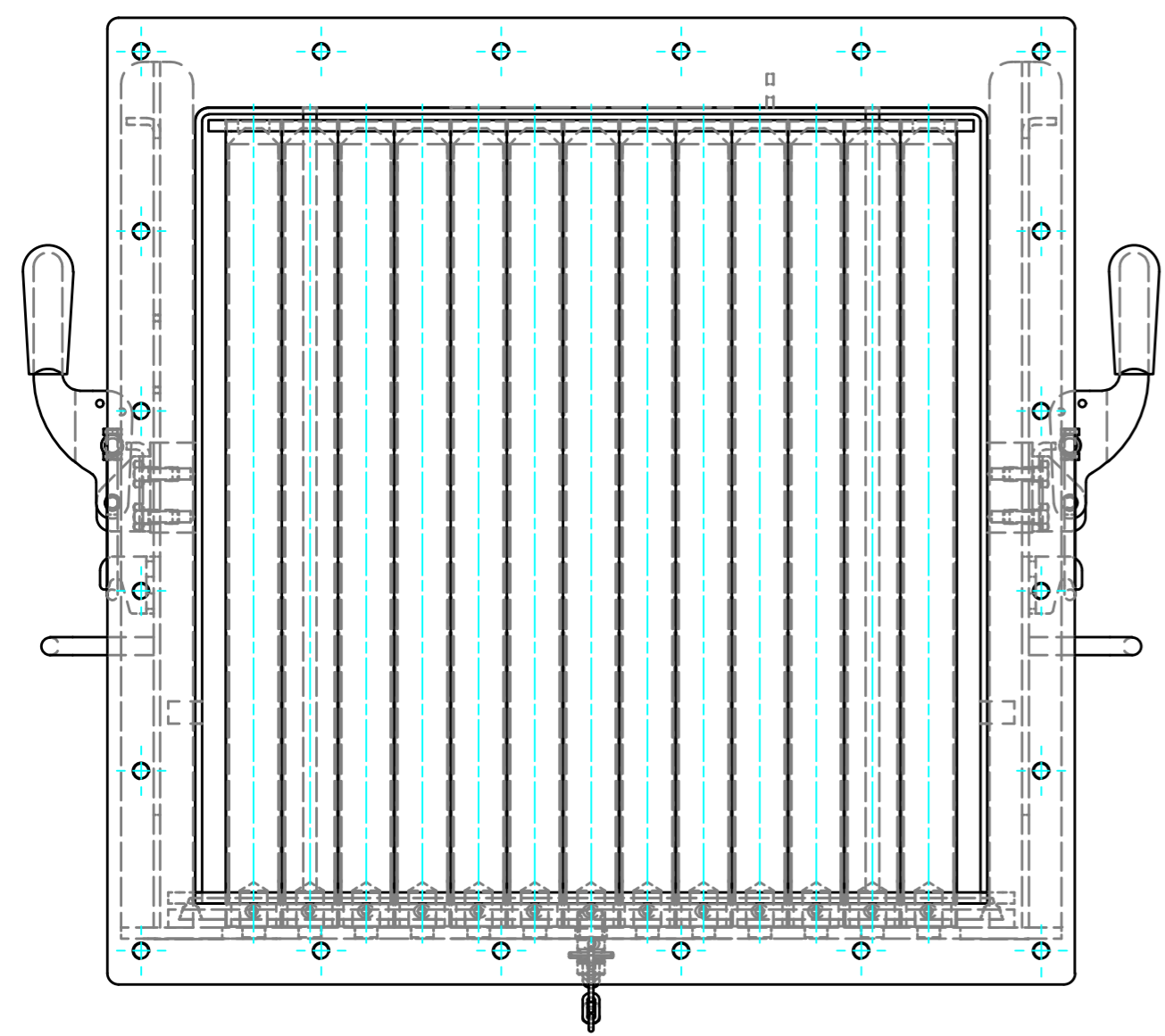


REV	DATE	BY	DESCRIPTION
-	26-2-2014	CR	NEW REVISION VAULT, NOTHING CHANGED, OLD REV WAS A
A	13-9-2018	CR	TYPE PLATE AND WARNING PLATES ADDED



ITEM	QTY	PART NUMBER	DESCRIPTION	Dimensions
12	13	72.9900002	PIN, S SLOTTED 3 x 20 - A2	3 x 20
11	8	50.1306016	BOLT, HEX M6 x 16-A4	M6 x 16
10	6	SBAME100009-355	BAR-N-23-355-25-CPC-NW-B	
9	7	SBAME100000-355	BAR-N-23-355-25-CPC-NH-B	
8	1	E0011098	GASKET CF350 SILICONE EC1935	
7	1	E0011097	GASKET CF350 SILICONE EC1935	
6	1	E0086350	TYPE PLATE SECF	
5	1	E0093454	STICKERS FOR SECF250-300-350	
4	1	M15489	CF000 LOCKER WITH CHAIN "SAFE"	
3	1	E0011089	EXTRACTOR WELD 6+7 CF3535	
2	1	M15414	FRONT CF3535	
1	1	E0011102	WELD ASSY HOUSE CF3535	

RAW MAT.	1				
QTY		MAT. NUMBER	MAT. DESCRIPTION	LENGTH (mm)	WIDTH (mm)
Sheet:	A2	Extra info:		General tolerance: ISO 2768 - mK	
Drawn:	CR	Weight (kg):	34,5	Drawn according: ISO268; ISO1101; ISO2553	
Date:	26-2-2014	Goudsmit MAGNETIC SYSTEMS		Status: Standard	
Spare part:	False	© All rights reserved. Reproduction is not permitted without written permission of GOUDSMIT Magnetic Systems BV		Customer reference number:	
Quick search:	CF3535	File number: E0101950		Rev: A	
Description:	SECF-B-3535-13E-N-F1E-W-B-B			Part number: SECF350438	Rev: A