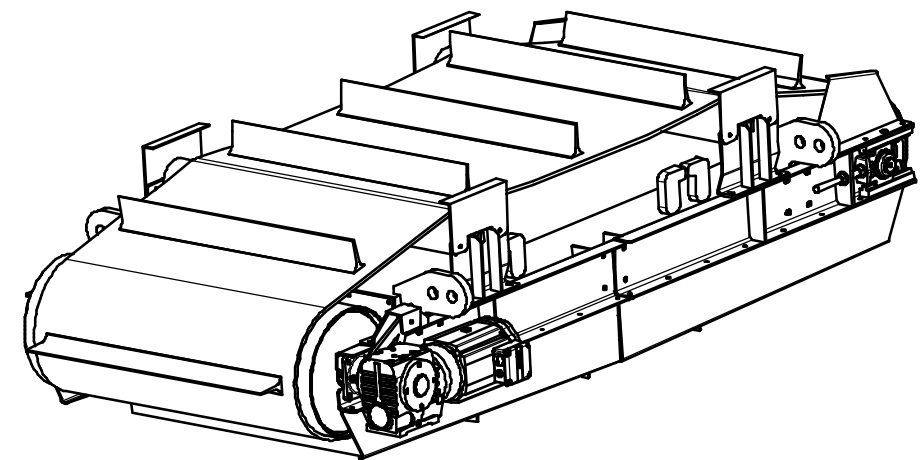
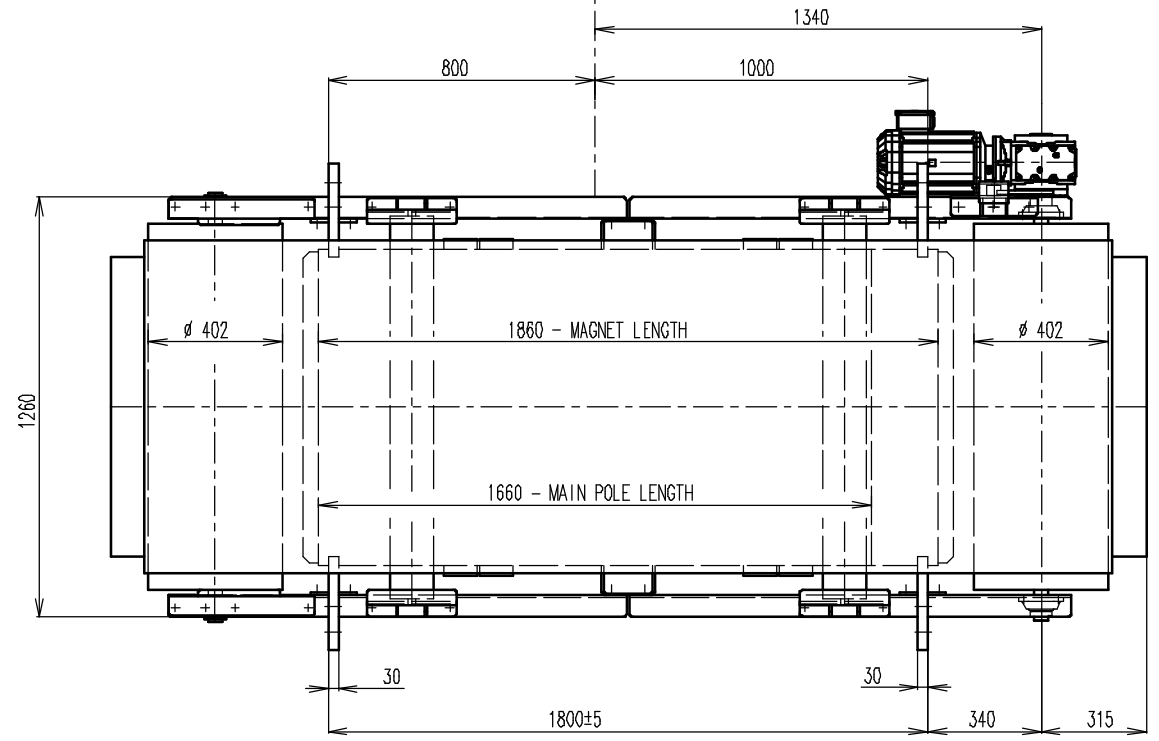
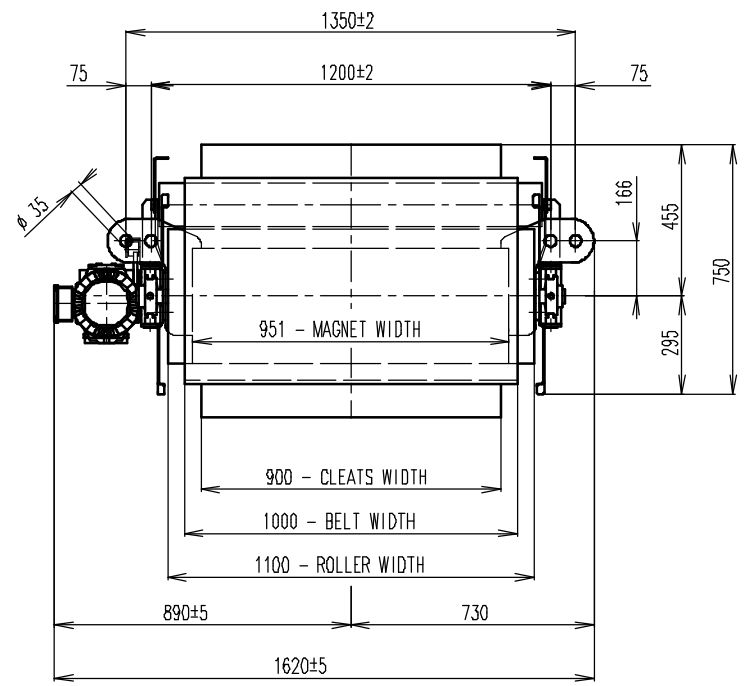
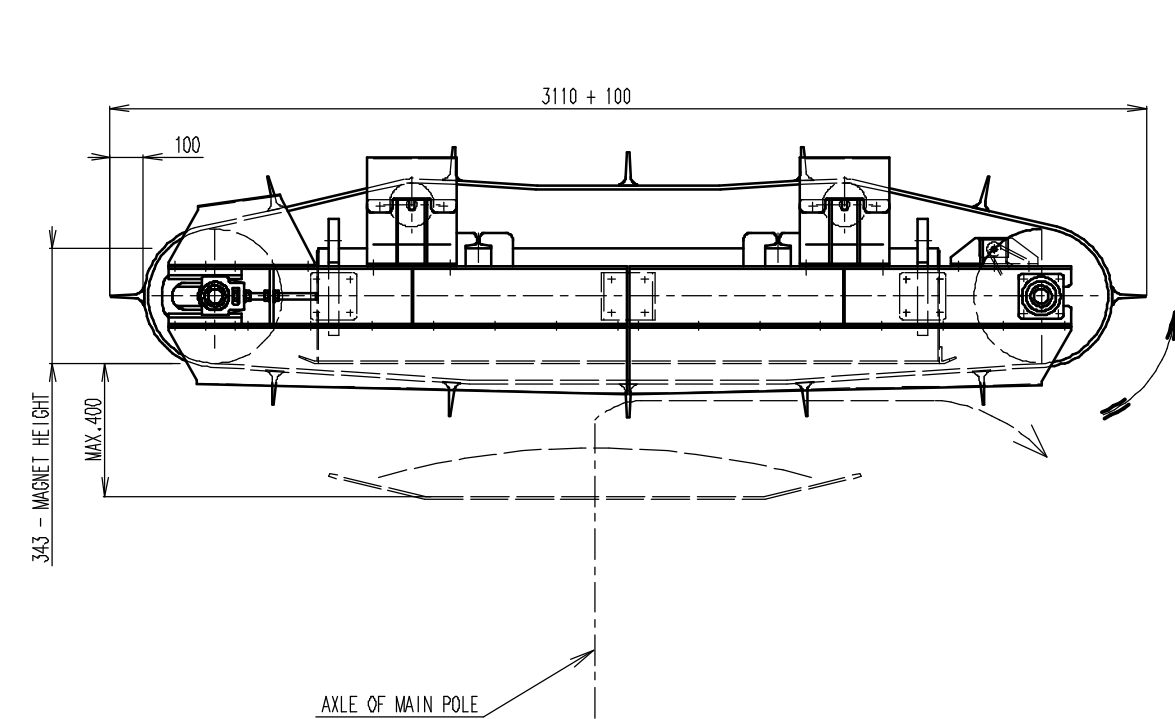


REV	DATE	BY	DESCRIPTION
A	27.09.2016	LF	ORIGINAL DRAWING



- GEARED BOX SEW SA67/TDRN100L4, i=20,37 (71 RPM), MOTOR 230/400V, 3kW, 50Hz, IP54
- DRUM SPEED 71/min
- BELT TYPE EP500, LENGTH 6340, WIDTH 1000, 12 CLEATS T100/10, WIDTH 900
- BELT SPEED 1,5 m/s

RAW MAT.	QTY	M4D_000000	MAT. NUMBER	MAT. DESCRIPTION	LENGTH (mm)	WIDTH (mm)
<b>Sheet:</b> A2 <b>Drawn by:</b> LF <b>Date:</b> 27.09.2016 <b>Scale:</b> 1:15 <b>Quick search:</b> ROFC		<b>Extra Info:</b> <b>Weight (kg):</b> 3150 <b>Product key:</b> ROP-F5-C-160-W-G-L-B-B-B-NA <b>Part number:</b> ROFC160350		<b>General tolerance:</b> ISO 2768 - cL <b>Drawn according:</b> ISO268; ISO1101; ISO2553 <b>Status:</b> <b>Customer reference number:</b> <b>Rev:</b> A		
<b>GOUDSMIT</b> <b>MAGNETIC SYSTEMS</b> <small>© All rights reserved. Reproduction is not permitted without written permission of GOUDSMIT Magnetic Systems BV</small>				<b>PERMANENT OVERBELT MAGNET FOR CROSS MOUNTING</b>		