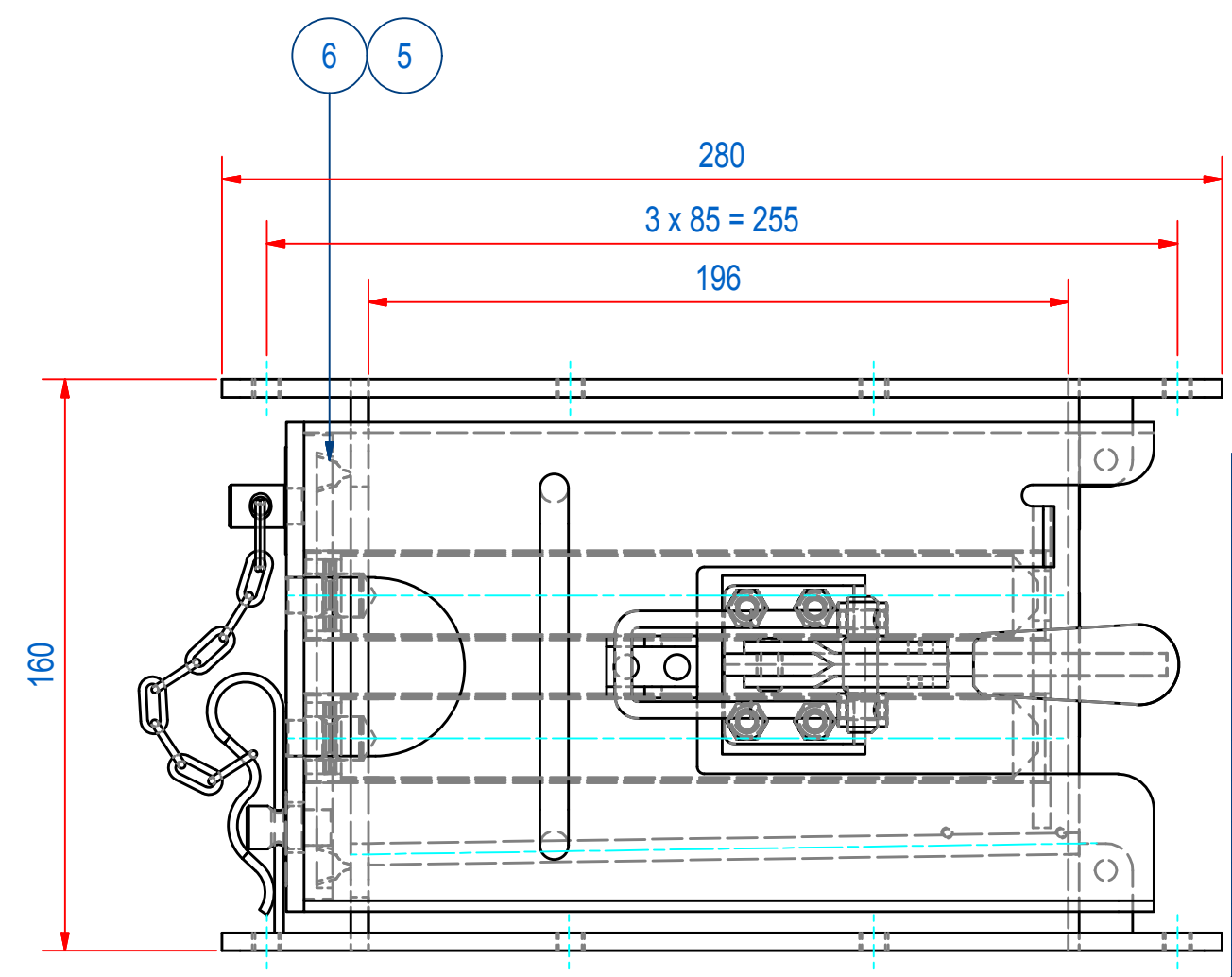
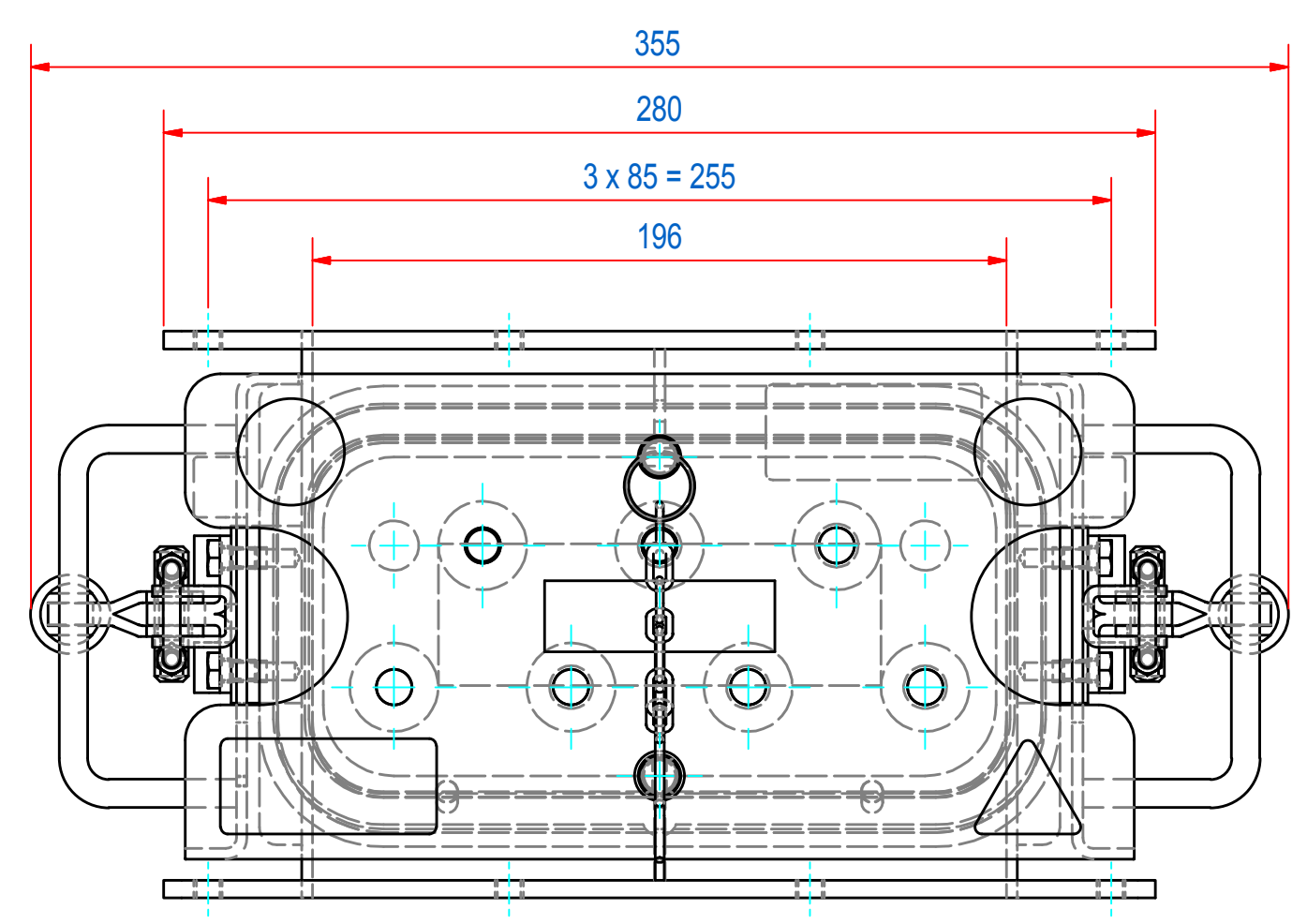
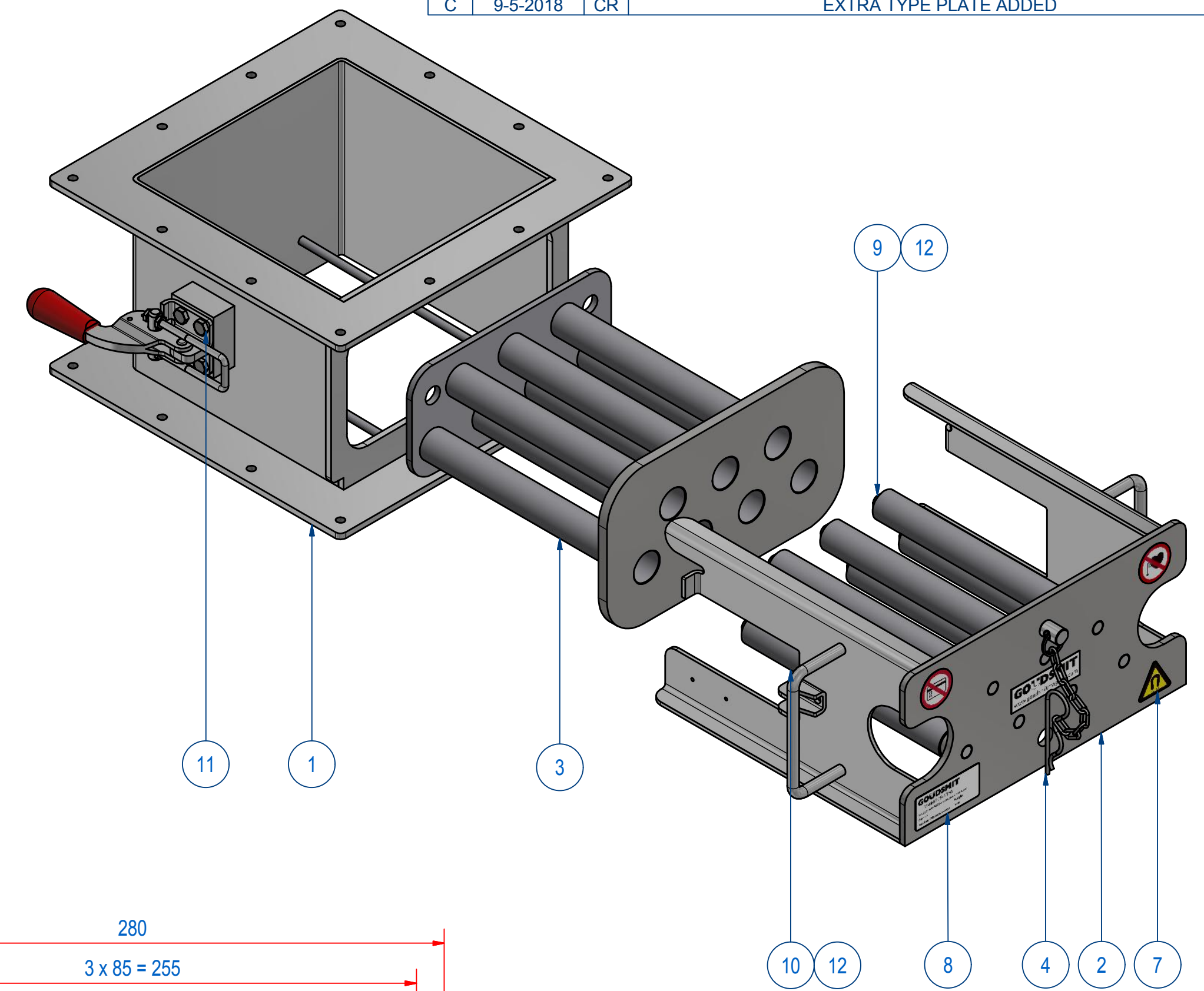
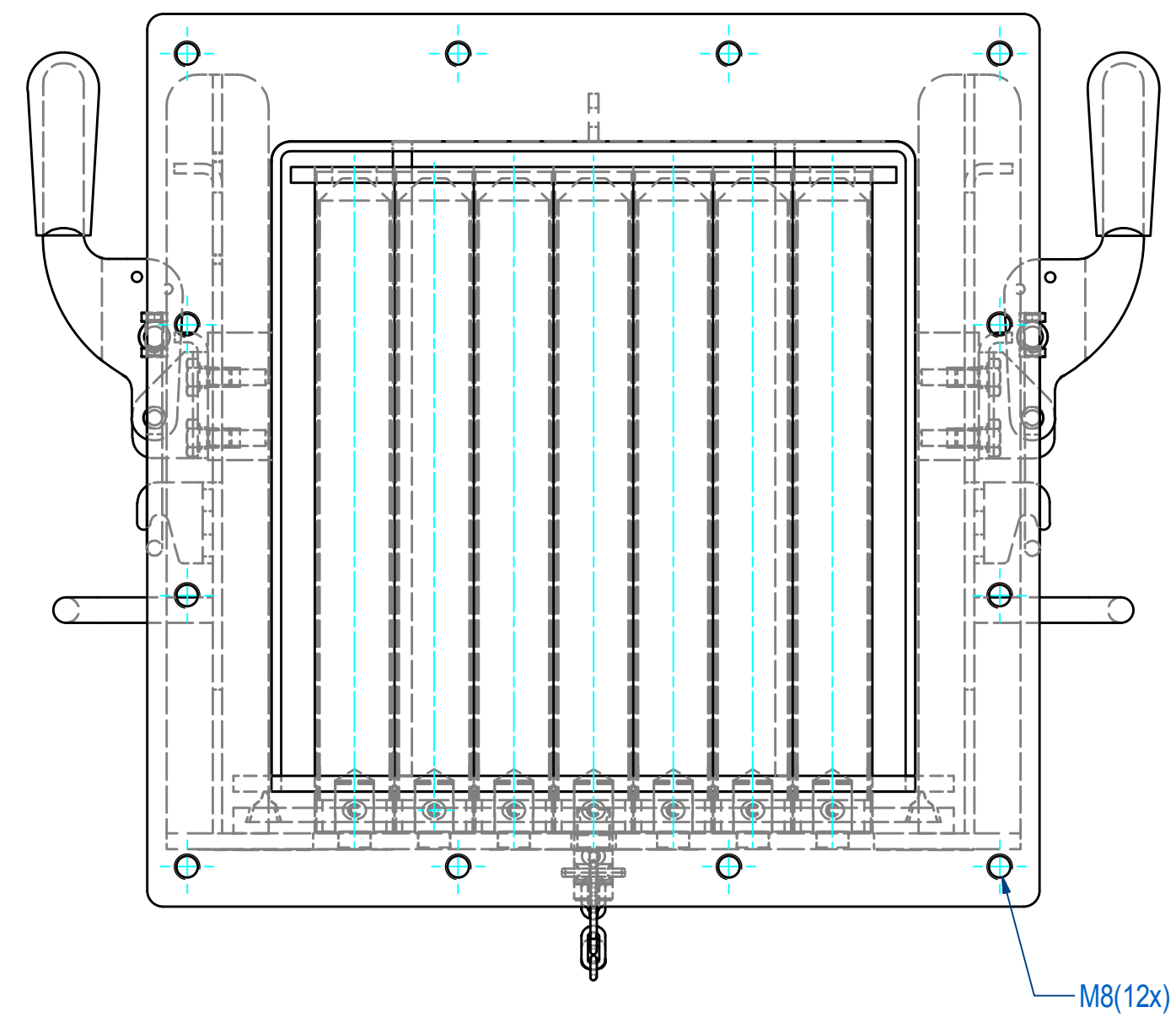


REV	DATE	BY	DESCRIPTION
A	12-2-2014	CR	ITEM CHANGED: A110098 WAS P110093
B	11-4-2018	CR	TYPE PLATE AND WARNING STICKERS ADDED
C	9-5-2018	CR	EXTRA TYPE PLATE ADDED



ITEM	QTY	PART NUMBER	DESCRIPTION	Dimensions
12	7	72.9900002	PIN, S SLOTTED 3 x 20 - A2	3 x 20
11	8	50.1306010	BOLT, HEX M6 x 10-A4	M6 x 10
10	4	SBAME100009-205	BAR-N-23-205-25-CPC-NH-B	
9	3	SBAME100000-205	BAR-N-23-205-25-CPC-NW-B	
8	2	E0086350	TYPE PLATE SECF	
7	1	E0092951	STICKERS FOR SECF	
6	1	E0005417	GASKET CF2020 SILICONE EC1935	
5	1	E0005416	GASKET CF2020 SILICONE EC1935	
4	1	M15489	CF000 LOCKER WITH CHAIN "SAFE"	
3	1	A110098	EXTRACTOR 3+4 WELD CF2020	
2	1	A110139	FRONT CF2020	
1	1	A110140	WELD ASSY HOUSE CF2020	

RAW MAT.	QTY	MAT. NUMBER	MAT. DESCRIPTION	LENGTH (mm)	WIDTH (mm)
	1				

Sheet: A2	Extra info:	General tolerance: ISO 2768 - mK
Drawn: CR	Weight (kg): 16,4	Drawn according: ISO268; ISO1101; ISO2553
Date: 19-6-2013		Status: Standard
Spare part: False		Customer reference number:
Quick search: CF2020	 <small>© All rights reserved. Reproduction is not permitted without written permission of GOUDSMIT Magnetic Systems BV</small>	File number: SECF200438 Rev: C
Description: SECF-B-2020-07E-N-F1E-W-B-B		Part number: SECF200438 Rev: C