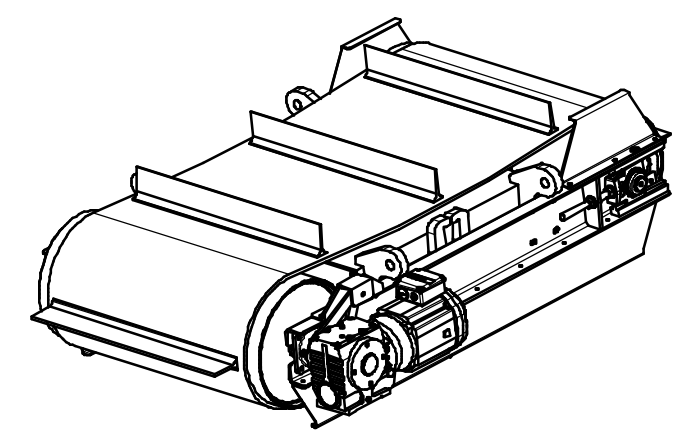
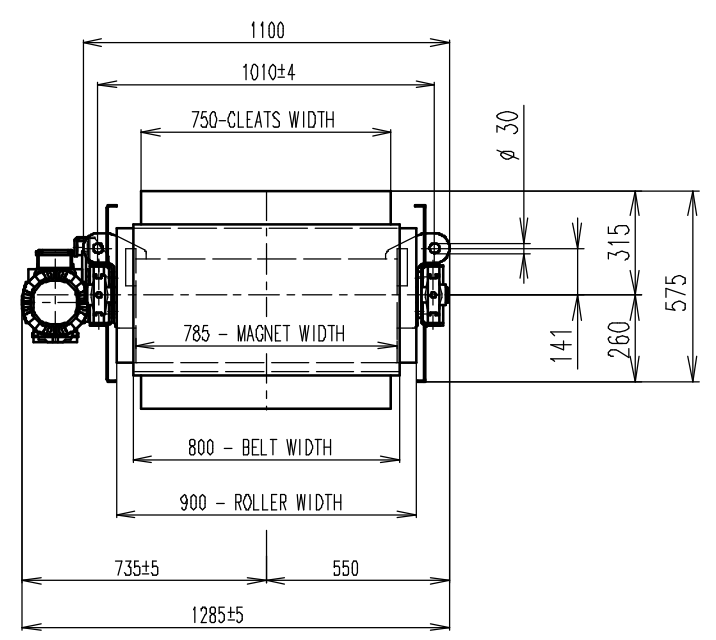
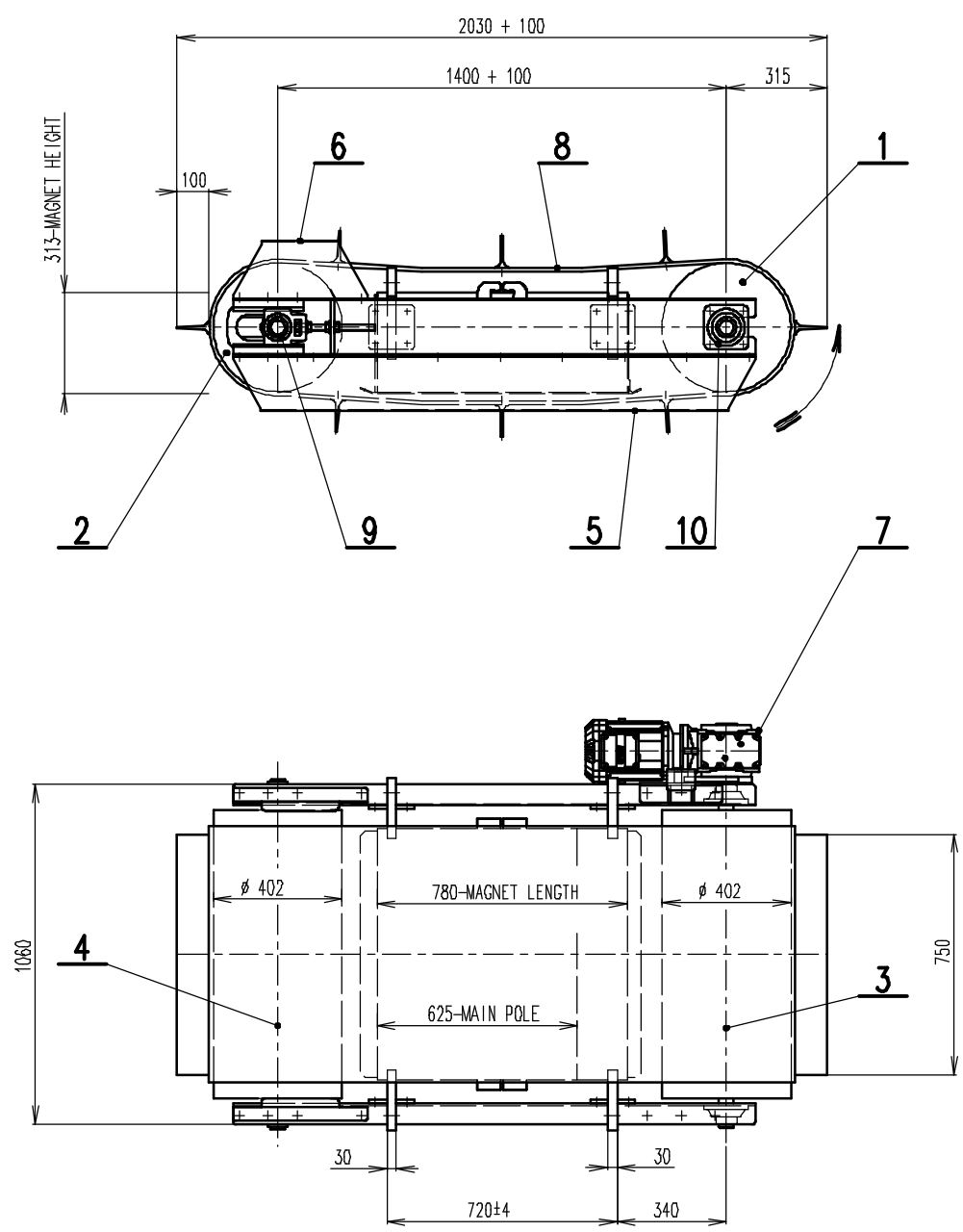


REV	DATE	BY	DESCRIPTION
-	12.01.2017	LF	ORIGINAL DRAWING



Position	Reference number	Specification	Size 1	Size 2	Material	Unit	Number	Mass
10	15_8700045	BEARINGS ASSEMBLY INA PCJ 45					2	2.2
9	15_8600045	BEARINGS ASSEMBLY INA PTUE 45					2	2.5
8	45_4080004	BELT EP500, W 800, L.4120, B CLEATS T100/10,					1	58
7	M022007105	SEW SA67/TDRN100LS4, 2,2kW, 71RPM					1	56
6	400_000007	ROLLER COVER ROFC000040	420	243	11373		2	1.95
5	M22_000001	BELT COVER ROFC065340	1660	243	17240		2	8.9
4	400_220101	SHAFT OF RETURN ROLLER SEPBD00004/09	1095	11523			1	22
3	400_370101	HAFT OF DRIVING ROLLER ROFC000040	1235	11523			1	23.5
2	400_220100_B	RETURN ROLLER SEPBD00004/09					1	119.6
1	400_370100_B	DRIVING ROLLER ROFC000040					1	121.1

- GEARED BOX SEW SA67/TDRN100LS4, i=20,37 (71RPM),
 MOTOR 230/400V, 2,2kW, 50Hz, IP54
 - DRUM SPEED: 71/min
 - BELT SPEED: 1,5 m/s
 - BELT EP500, LENGTH 4120, WIDTH 800,
 8 CLEATS T100/10, WIDTH 750

RAW MAT.	QTY	MAT. NUMBER	MAT. DESCRIPTION	LENGTH (mm)	WIDTH (mm)
Sheet: A2	Extra info:		General tolerance: ISO 2768 -		
Drawn by: LF	Weight (kg):	Drawn according: ISO268; ISO1101; ISO2553		Status:	
Date: 12.01.2017	Scale: 1:15		Customer reference number:		
Quick search: ROFC	Description: SPARE PARTS FOR ROFC065340		Product key: ROP-F4-C-065-W-G-L-B-B-B-NA		
			Part number: ROFC065340_SP Rev. -		



© All rights reserved. Reproduction is not permitted without written permission of GOUDSMIT Magnetic Systems BV