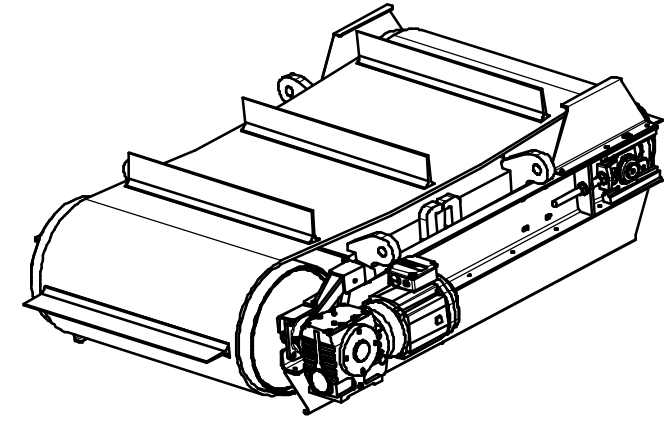
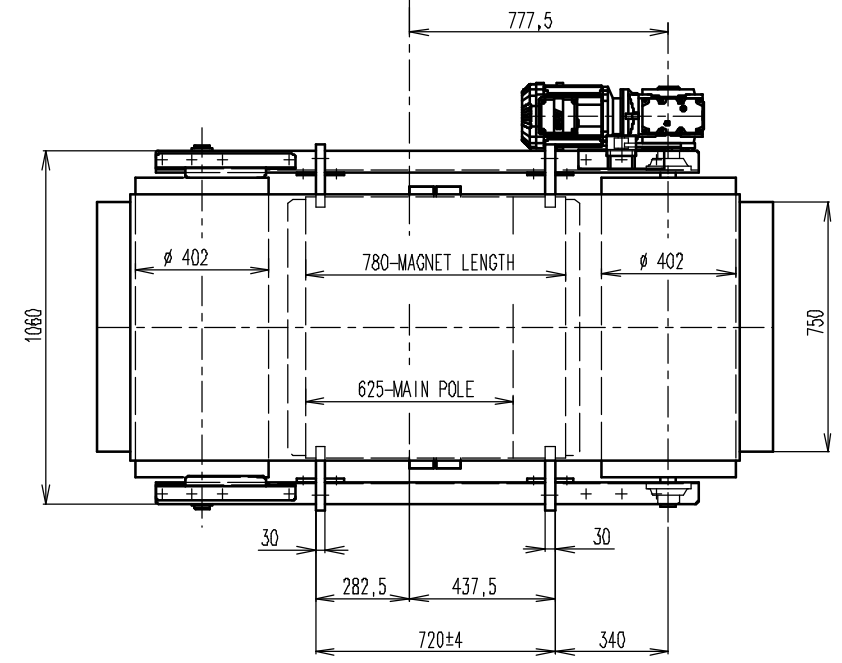
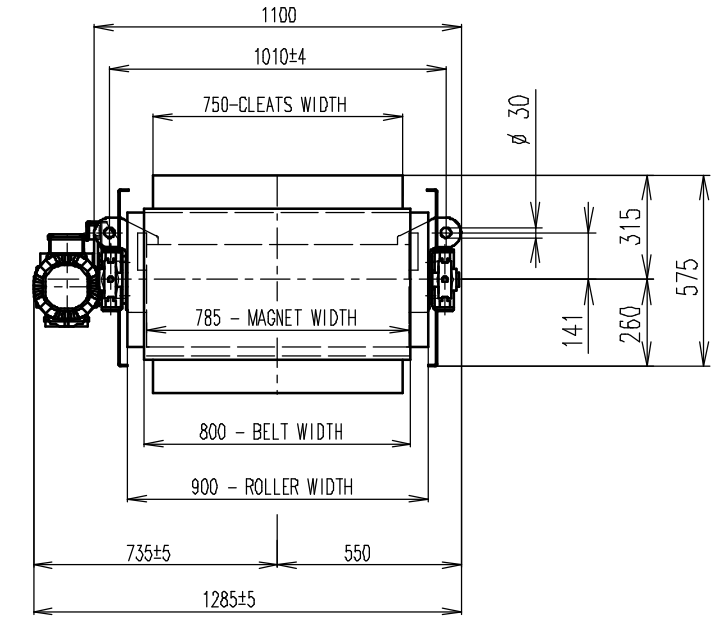
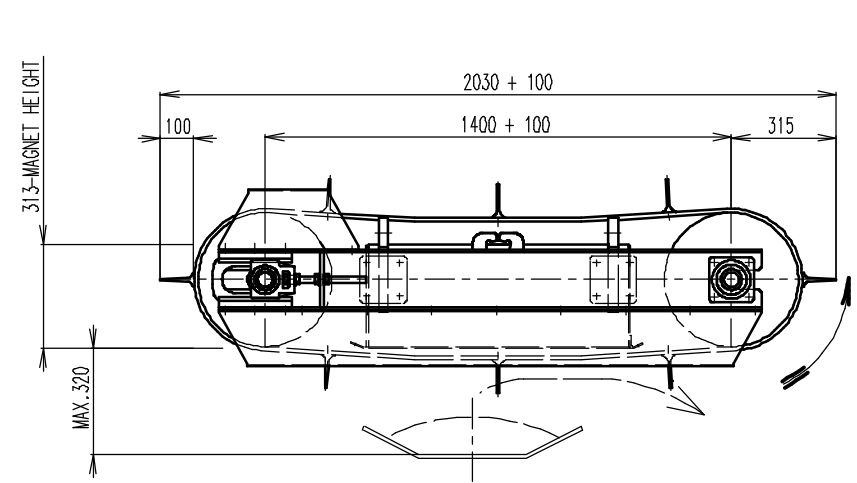


REV	DATE	BY	DESCRIPTION
B	15.09.2016	LF	MOTOR DRN100LS4 (WAS DRE100M4), MAGNET WIDTH 785 (WAS 780)



- GEARED BOX SEW SA67/TDRN100LS4, i=20,37 (71RPM), MOTOR 230/400V, 2,2kW, 50Hz, IP54
- DRUM SPEED: 71/min
- BELT SPEED: 1,5 m/s
- BELT EP500, LENGTH 4100, WIDTH 800, 8 CLEATS T100/10, WIDTH 750

RAW MAT.	QTY	MAT. NUMBER	MAT. DESCRIPTION	LENGTH (mm)	WIDTH (mm)
Sheet: A2		Extra info:		General tolerance: ISO 2768 - cL	
Drawn by: LF		Weight (kg): 1230		Drawn according: ISO268; ISO1101; ISO2553	
Date: 15.09.2016		GOUDSMIT MAGNETIC SYSTEMS <small>© All rights reserved. Reproduction is not permitted without written permission of GOUDSMIT Magnetic Systems BV</small>		Status:	
Scale: 1:15				Customer reference number:	
Quick search: ROFC		Description: PERMANENT OVERBELT MAGNET FOR CROSS MOUNTING		Product key: ROP-F4-C-065-W-6-L-B-B-B-NA	
				Part number: ROFC065340	
				Rev: B	