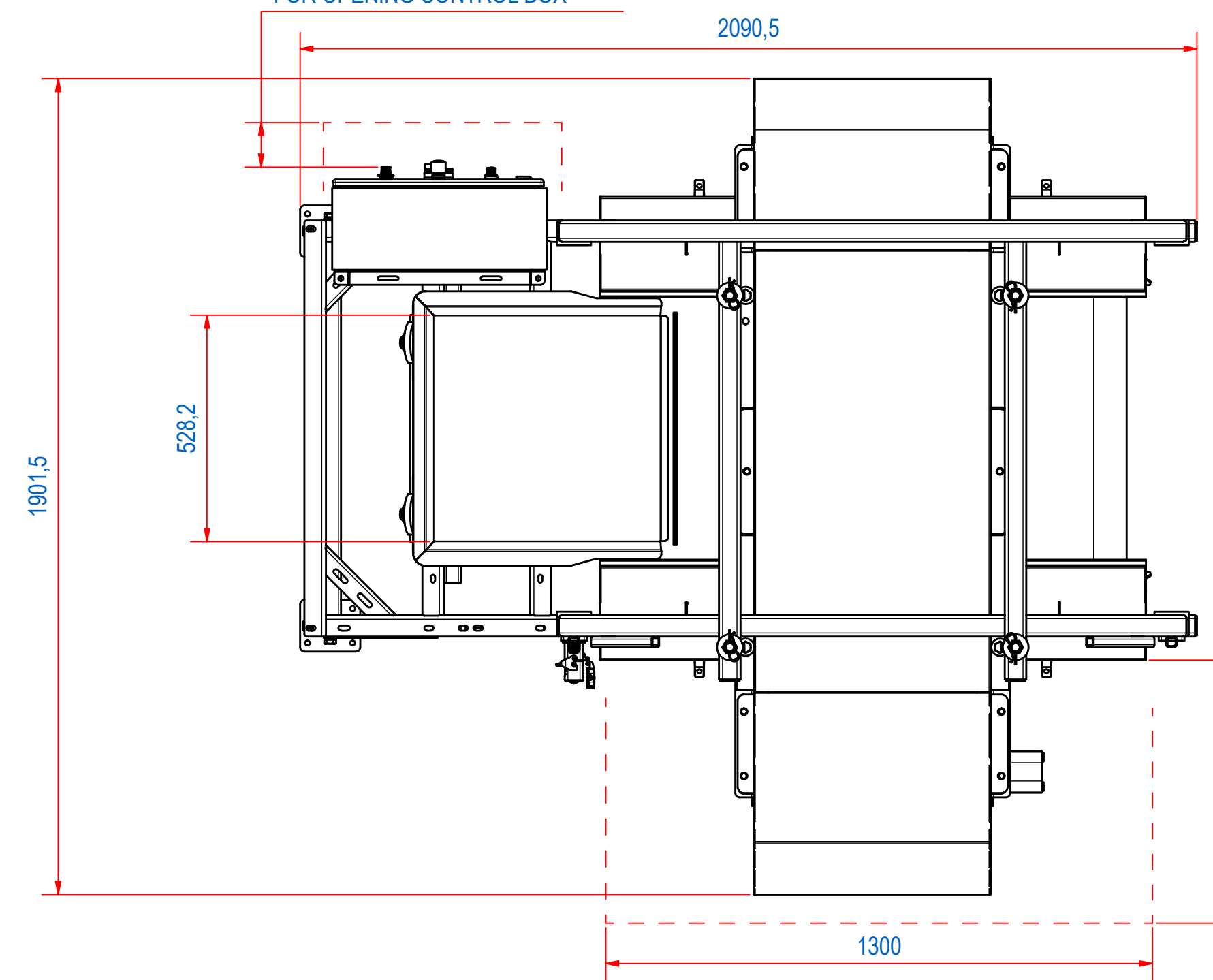
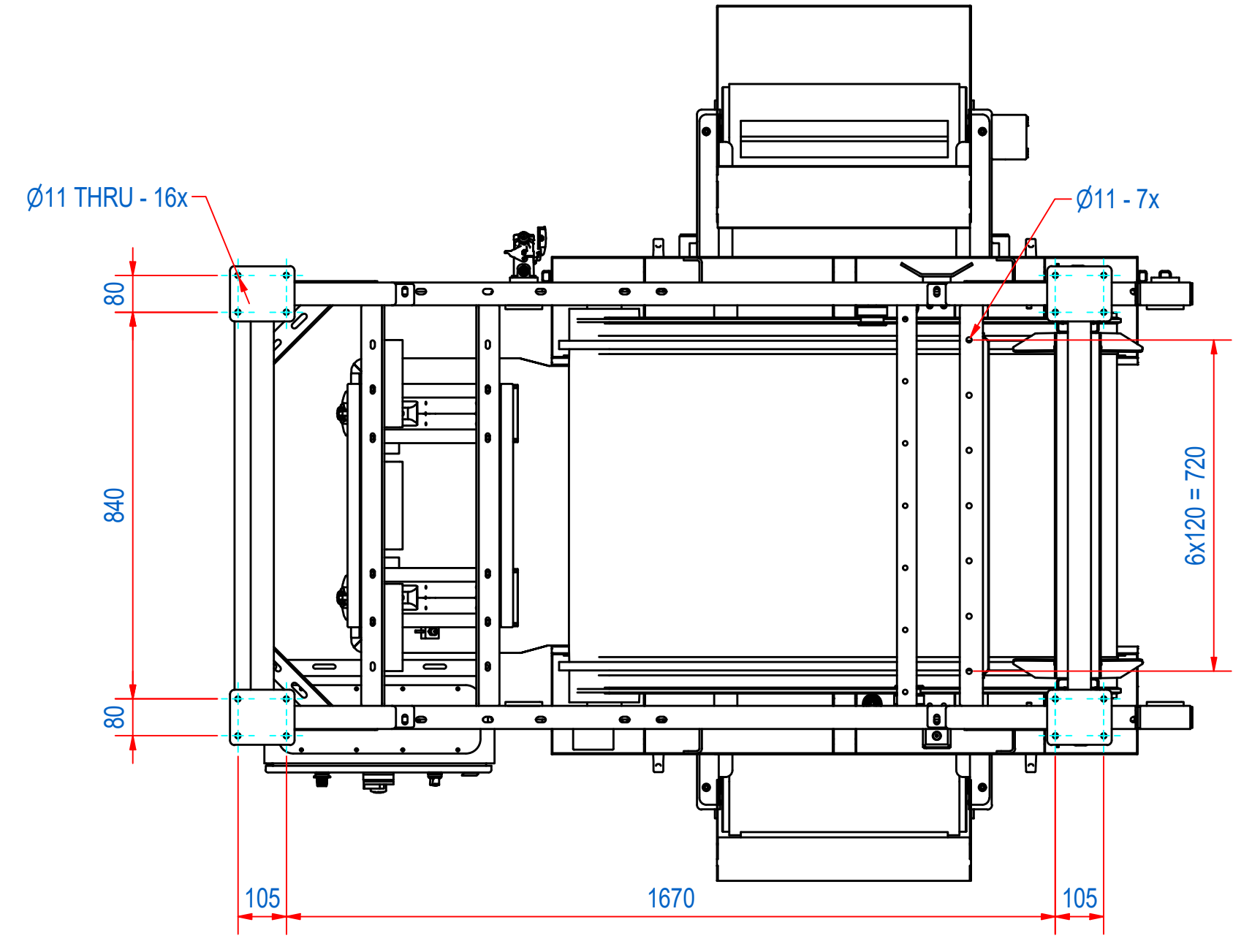
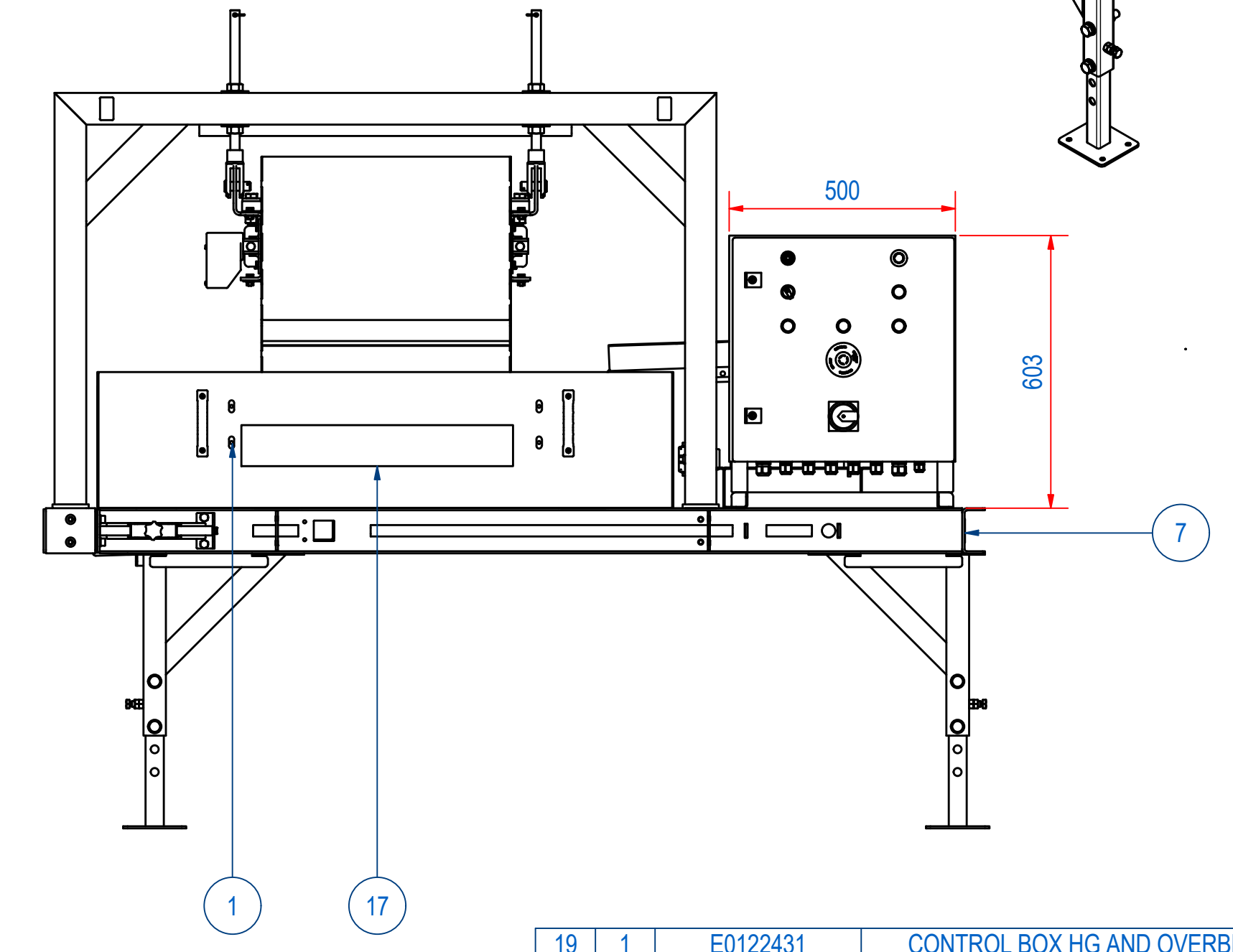
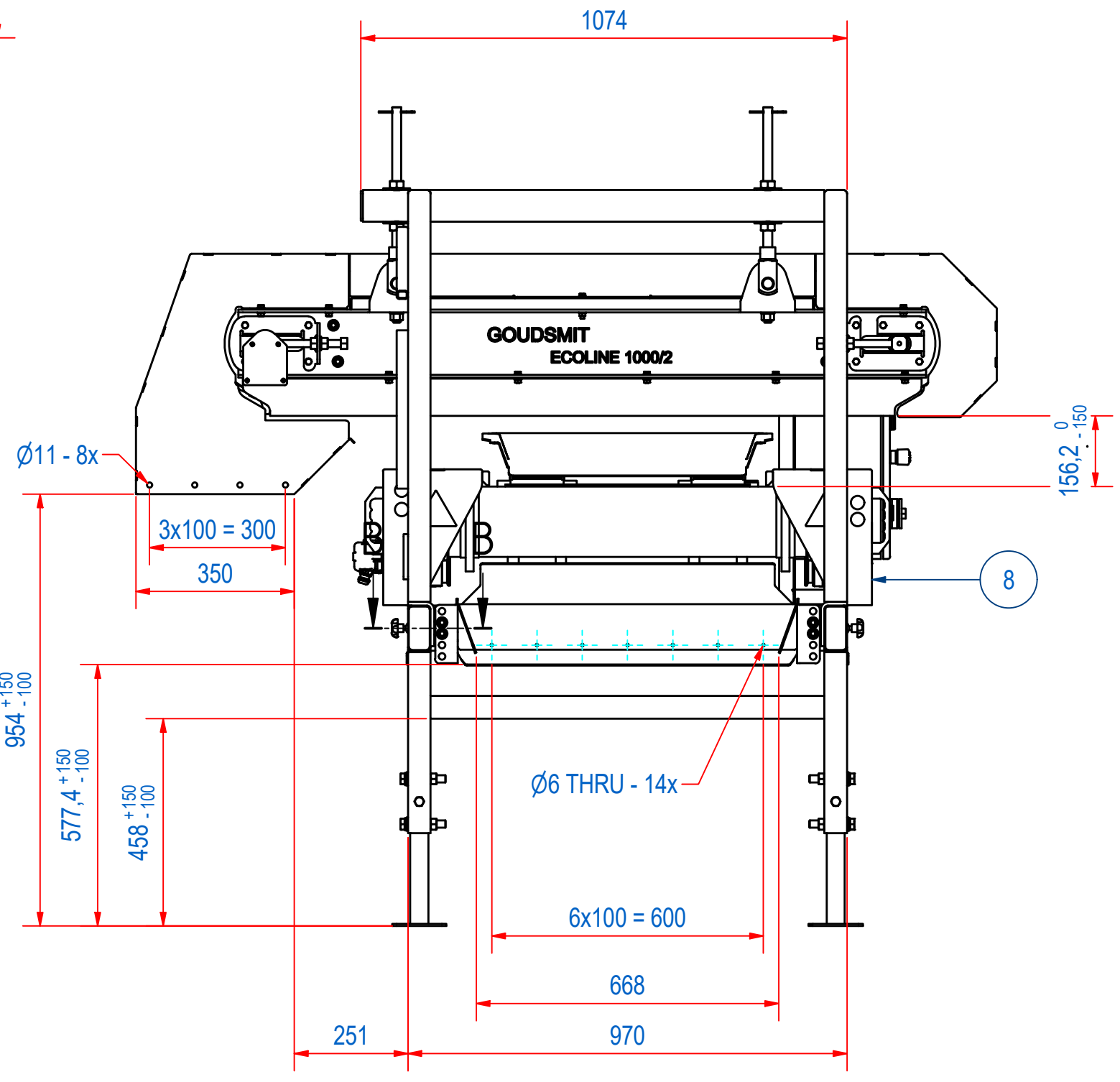
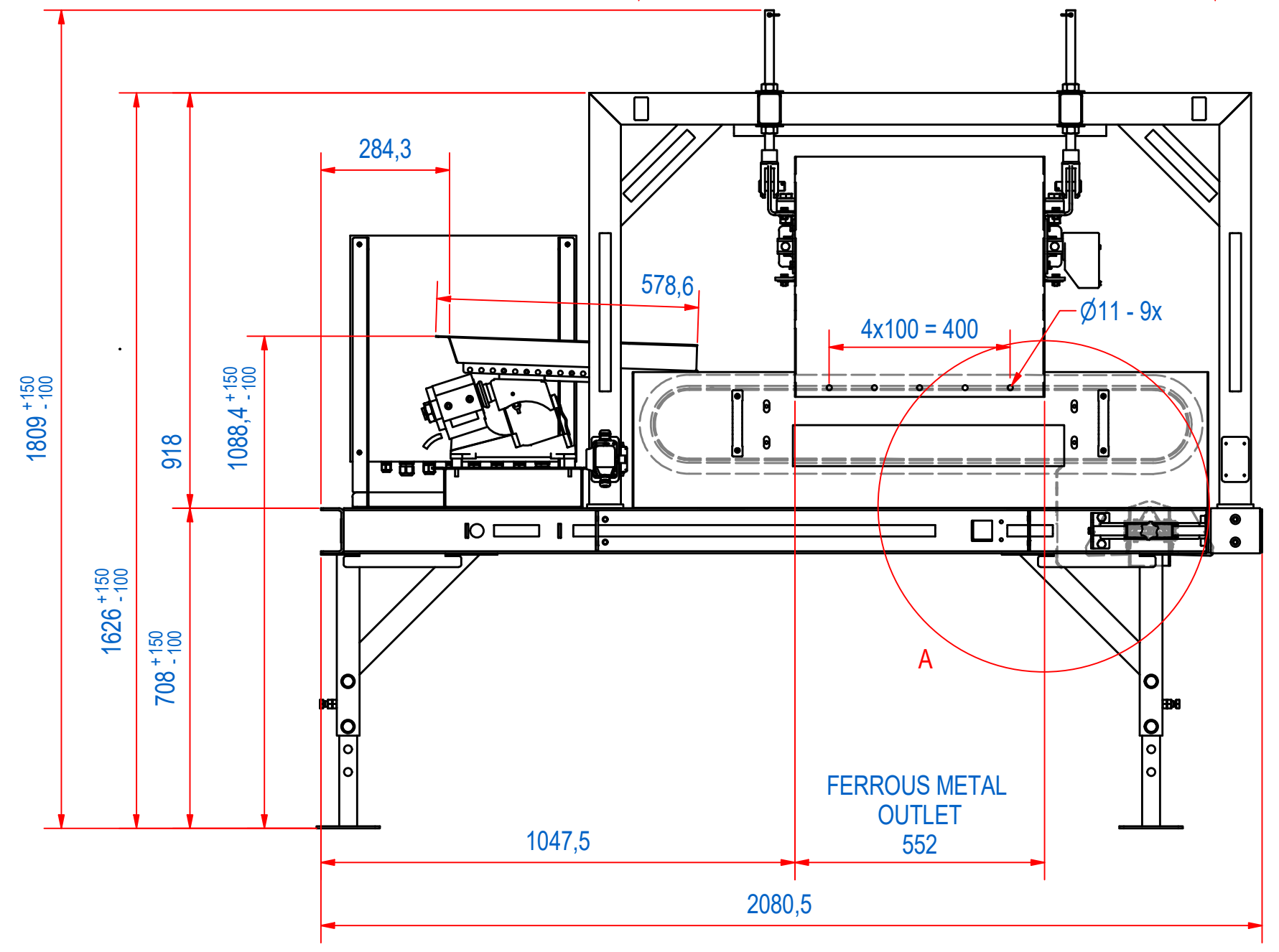
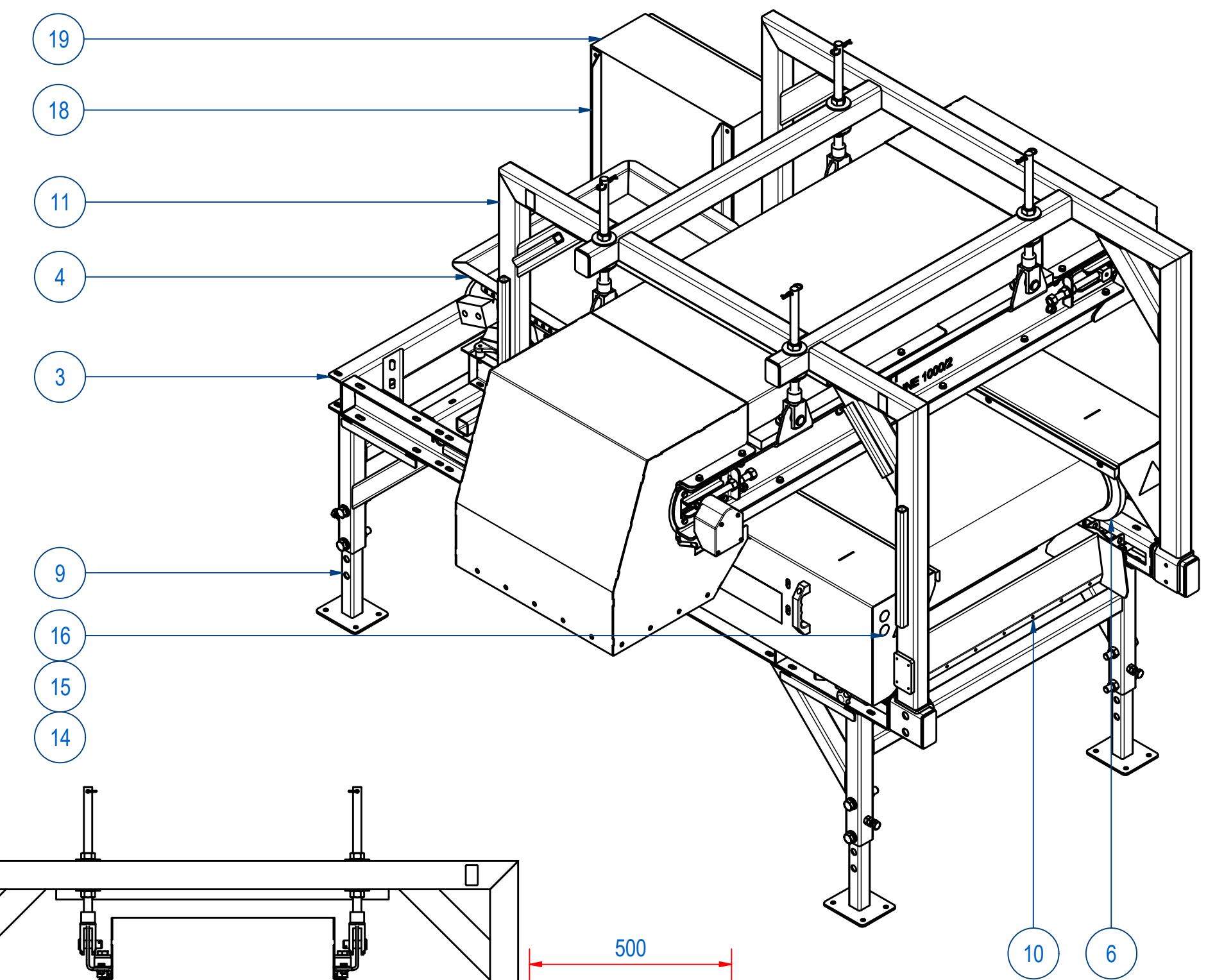
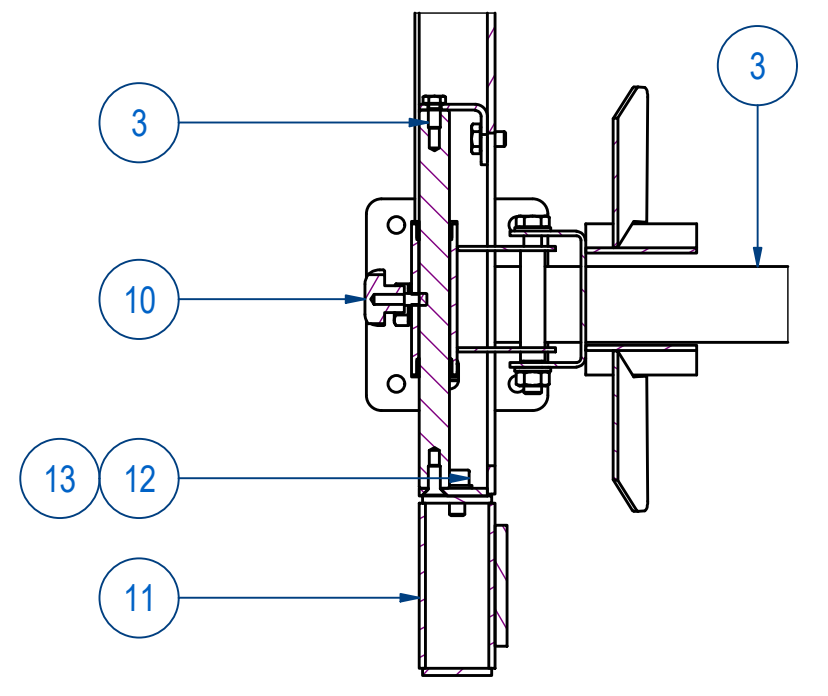


DOC.NR.	REV	DATE	BY	DESCRIPTION
E0121874	A	4-9-2019	TT	ADDED INTERFACE DIMENSIONS
E0121874	B	6-9-2019	TT	REPLACED DATA PLATE WITH NEW LOGO DATA PLATE
E0121874	C	24-9-2019	DD	CONTROLBOX CHANGED (DIM CHANGED)

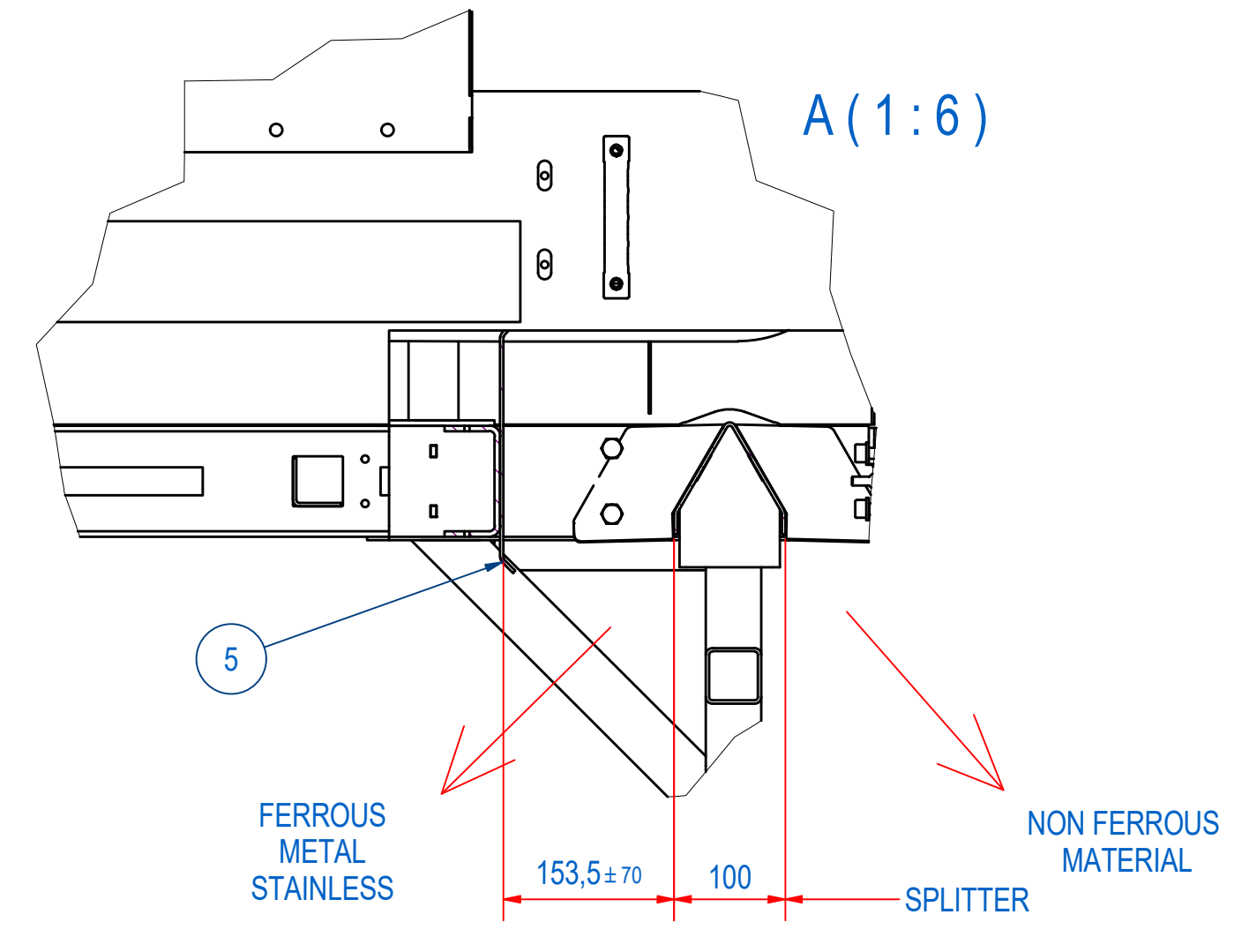
RECOMMENDED FREE SPACE ±500 FOR OPENING CONTROL BOX



B-B (1:5)



A (1:6)



ITEM	QTY	PART NUMBER	DESCRIPTION	Dimensions
19	1	E0122431	CONTROL BOX HG AND OVERBELT EXHIBITION	
18	1	E0093415	CONTROL BOX 500x500 FRAME	
17	2	E0120516	STICKER GOUDSMIT MAG. W600 BLACK	
16	2	1000.20020	STICKER PACEMAKER FORBID. D=30	
15	2	1000.20019	STICKER MAGN. CARD FORB. D=30	
14	2	1000.20031	STICKER MAGNETIC FIELD 90mm	
13	4	70.0100010	WASHER M10 - St.Zn	M 10
12	4	51.0110020	SCREW, HEX SH M10 x 20 - St.8 Zn	M10 x 20
11	1	E0121119	SUPPORT FRAME RHPS ASSY	
10	1	E0117338	HG 06 SPLITTER ASSY	
9	4	E0087709	EXTENDING LEG 600-700 RHPS	
8	2	E0117754	SIDE ASSY	
7	1	E0122115	NEW DATA PLATE SMALL	
6	1	45.1800100	BELT PU 1.3MM RHFH600 2544x817	
5	1	E0087774	SCRAPER PLATE RH1506	
4	1	E0087930	VIB FEEDER ASSY	
3	1	E0117774	FRAME ASSY WITH LEGS RH1506	
2	1	RHAH150561	RHP-H153R18-060-RSB-BA	
1	1	E0087805	BELT FRAME ASSY W. DRIVE RH15	

RAW MAT.	Quantity	Material Number	Material Description	Length (mm)	Width (mm)
1	1				

Drawn: DD	Weight (kg): 1303,6	General tolerance: ISO 2768 - cL
Date: 27-6-2019	Source: False	Drawn according: ISO268; ISO1101; ISO2553
Spare part: RHPS	Quick search: RHPS	Status: Released
Description: RHPS-H-06-SCS-N-SM-B-N-B-N	Customer reference number:	Document number: E0121874
		Doc.Rev: C
		Part number: E0117739
		Rev: B