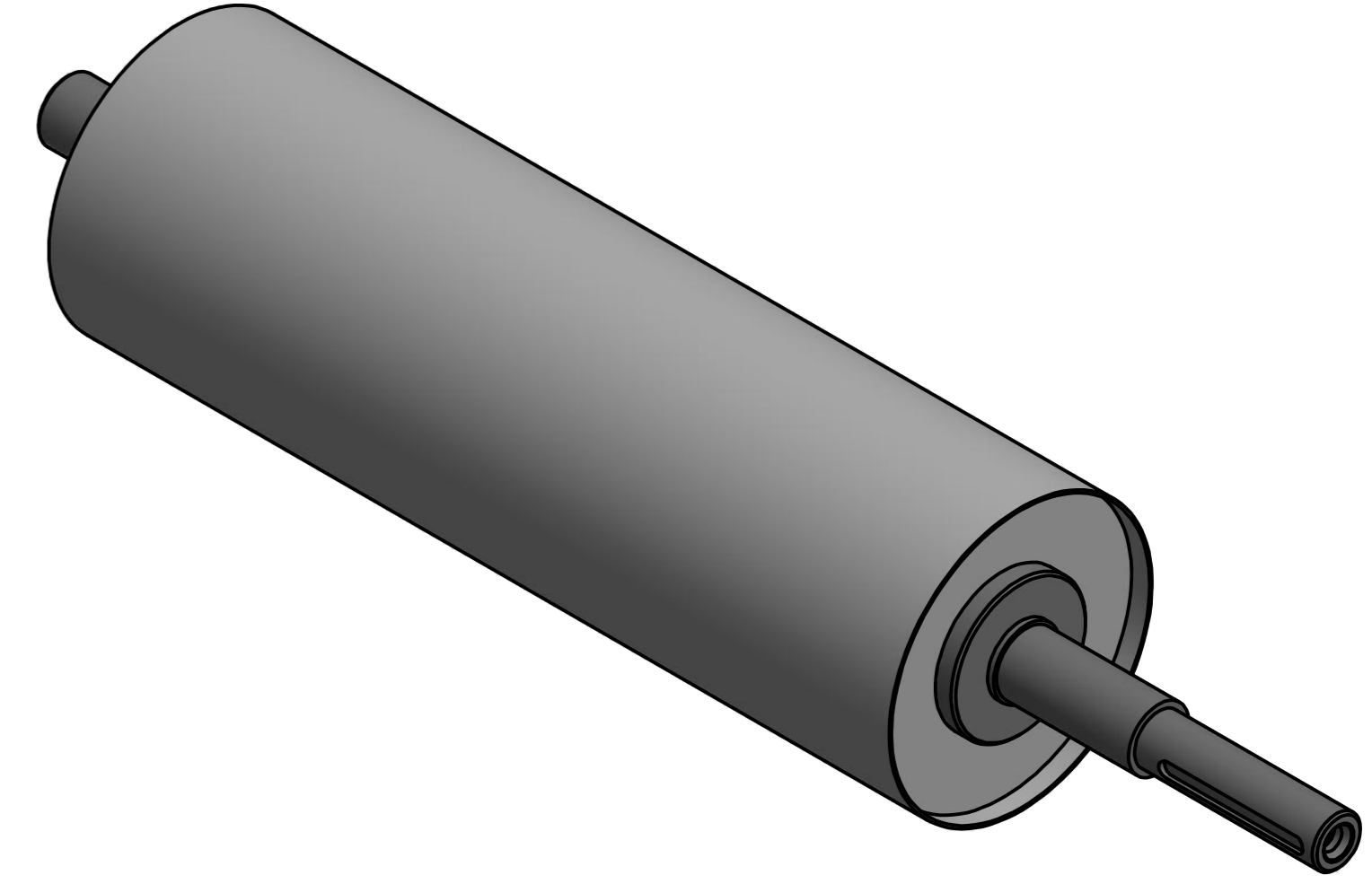
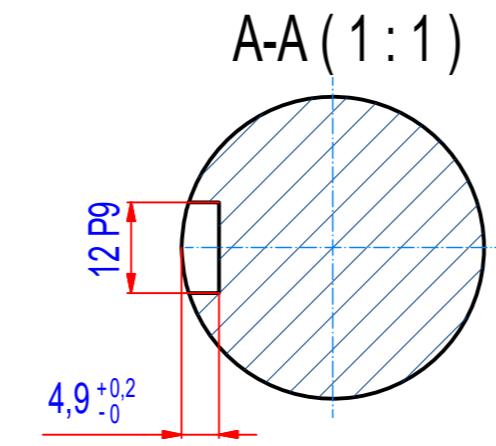
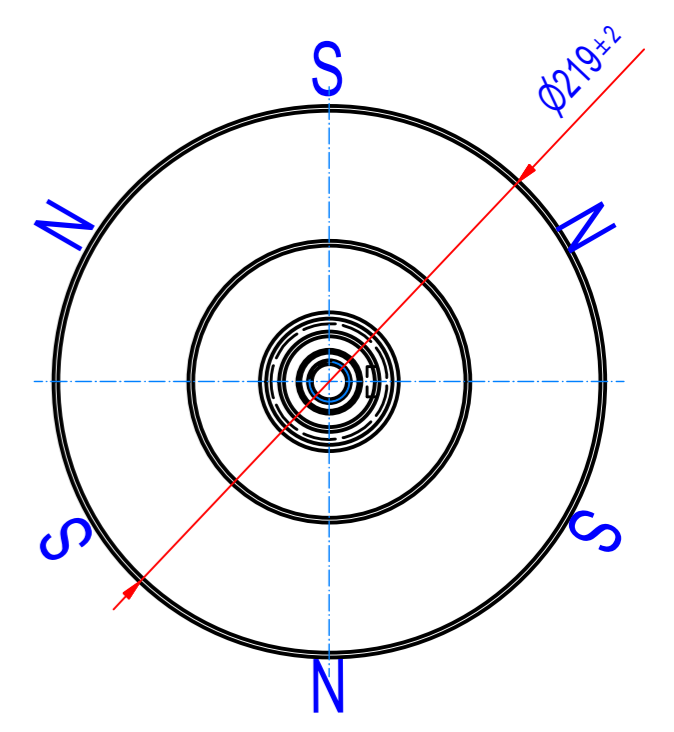
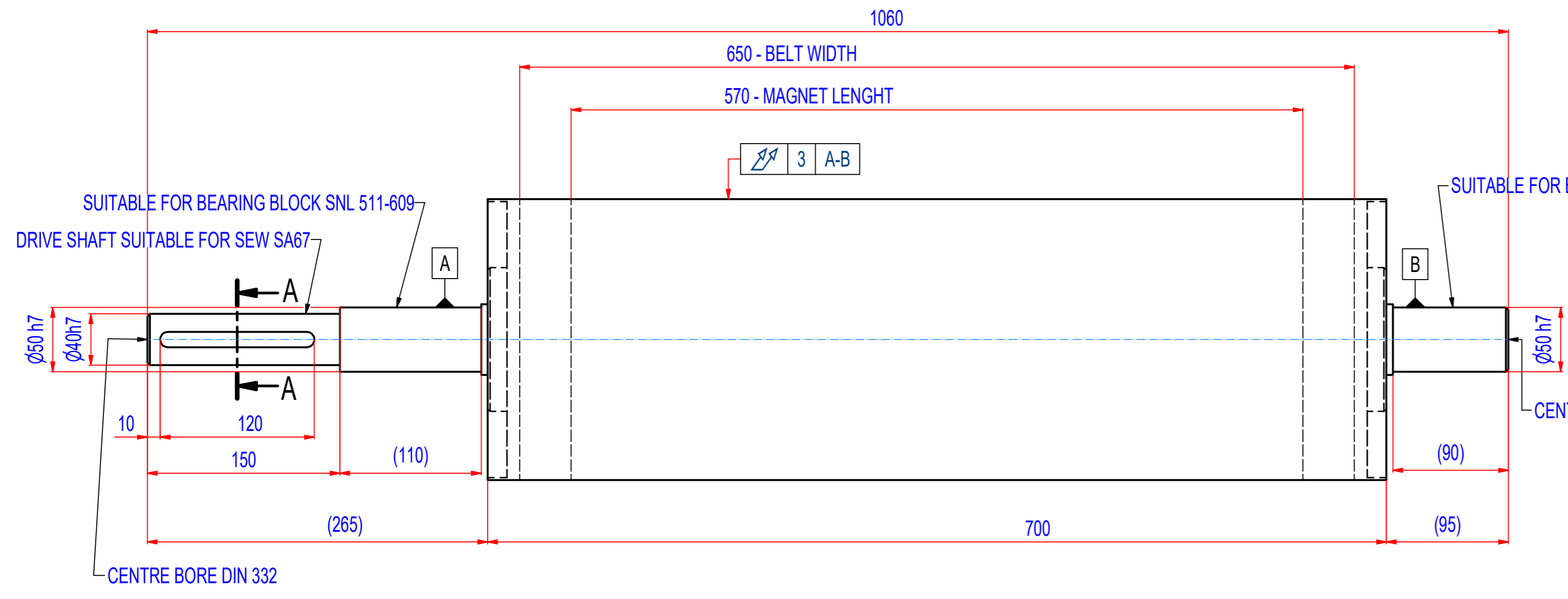


REV	DATE	BY	DESCRIPTION
A	19.2.2013	JDL	ORIGINAL DRAWING
B	14.9.2016	PH	CHANGE LENGTH - NEW STANDARD(700mm)



SPECIFICATIONS

- SUITABLE FOR BELT WIDTH: 650 mm
- MAGNET TYPE: Ferrite
- NUMBER OF POLES: 6
- SURFACE MAG. INTENSITY: 1800 Gauss
- SHAFT TYPE: REMOVABLE,EQUIPPED WITH CLAMP BUSHINGS
- OVERALL WEIGHT: 116 kg
- CROWNING: NO
- RUBBER LAYER: NO

IF NOT SPECIFIED ON DRAWING, LINEAR DIMENSION TOLERANCES PER ISO 2768-1 CLASS C , GEOMETRICAL TOLERANCES PER ISO 2768-1 CLASS L

Sheet: A2	Extra info:	General tolerance: ISO 2768 - cL
Drawn: PH	Weight (kg): 116	Drawn according: ISO268; ISO1101; ISO2553
Date: 22.02.2019		Status:
Predecessor:		Customer reference number:
Quick search: XRHR D219		Product key: RHP-F219A06-065-RSD-BA
Description: Magnetic headroller, Ferrite, D219 - W700		Part number: RHAF22065000
		Rev: B