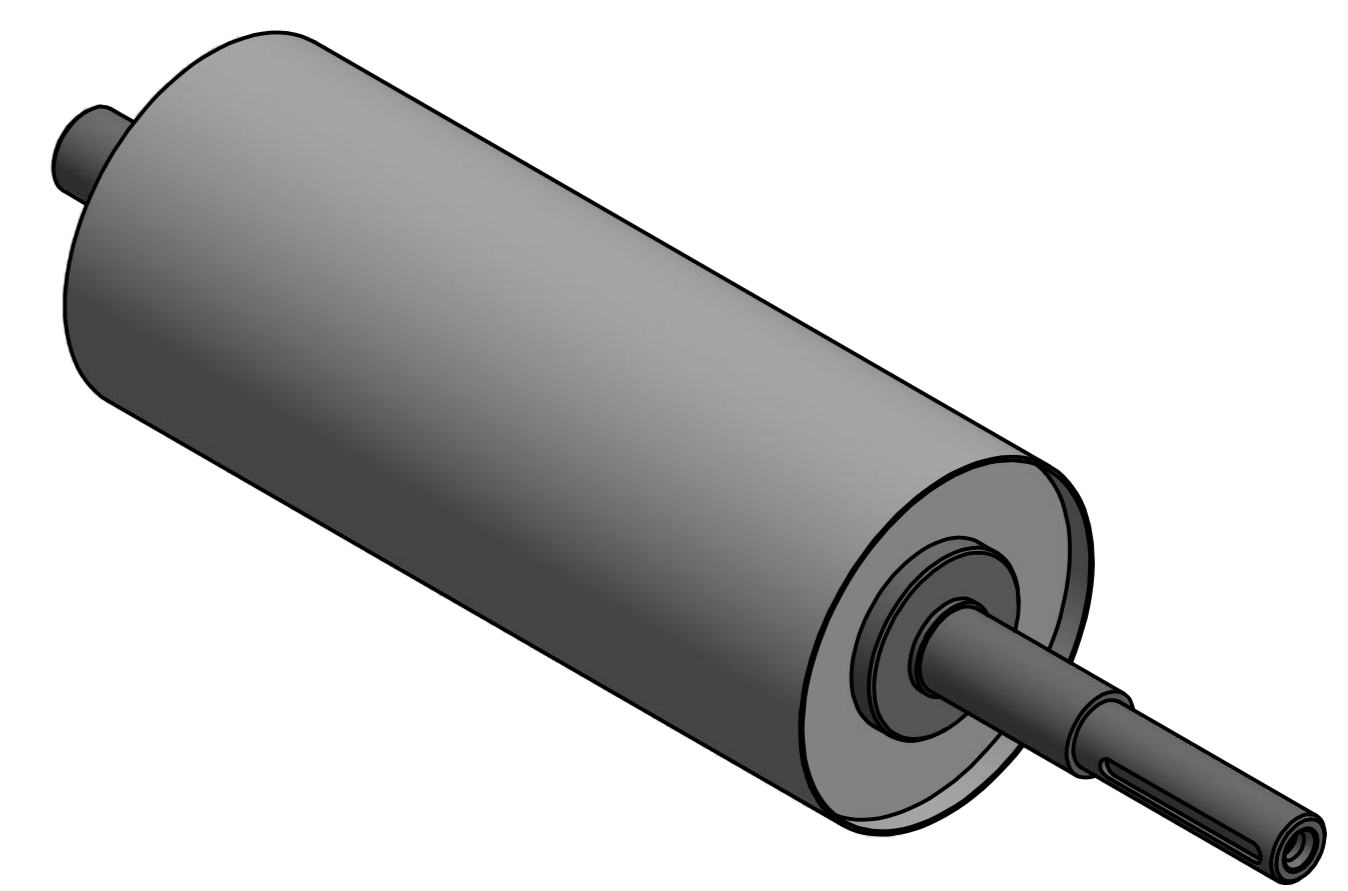
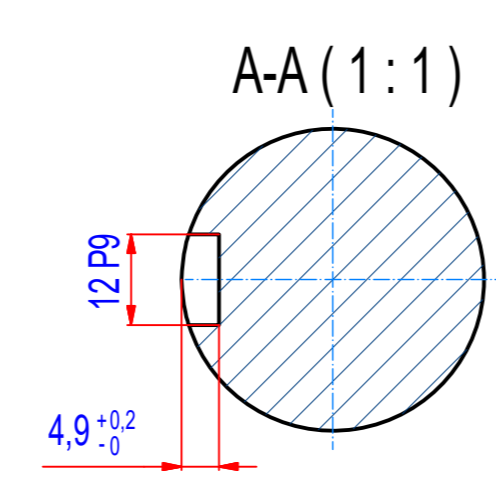
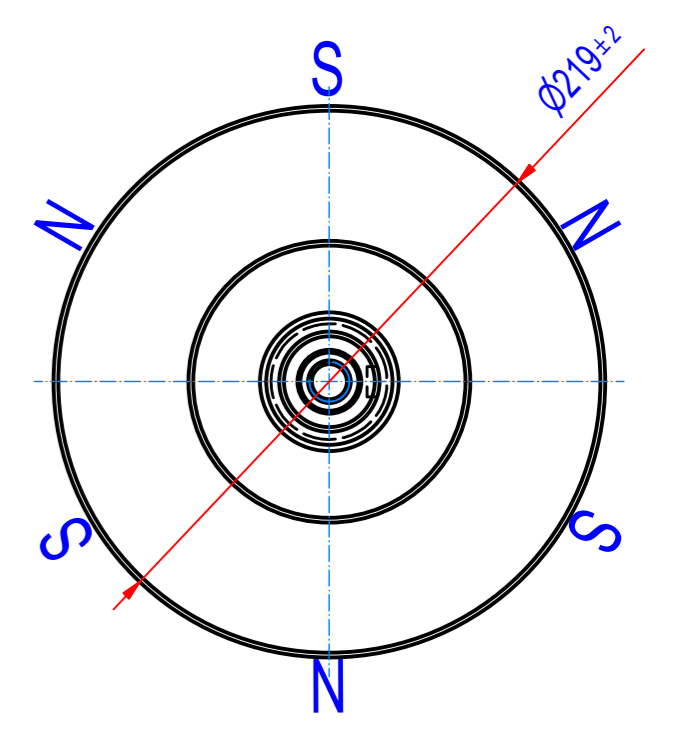
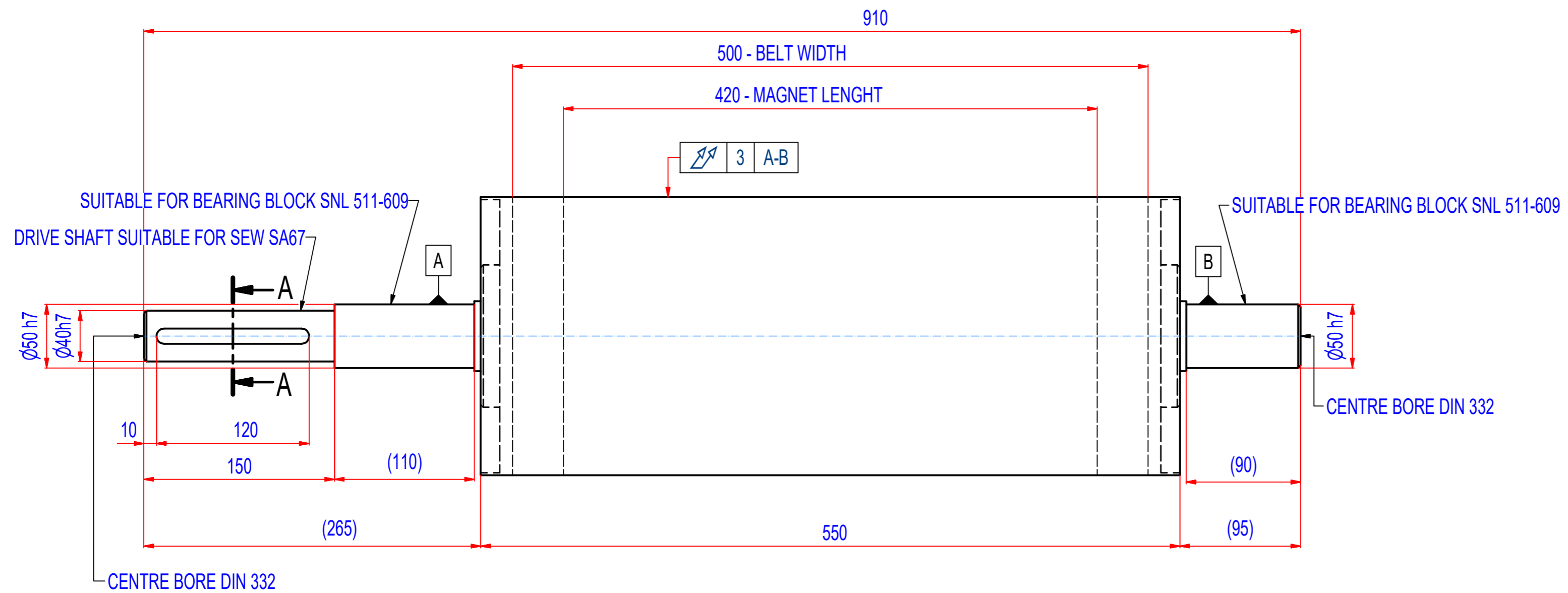


REV	DATE	BY	DESCRIPTION
A	12.2.2013	JDL	ORIGINAL DRAWING
B	14.9.2016	PH	CHANGE LENGHT - NEW STANDARD(550mm)



SPECIFICATIONS
SUITABLE FOR BELT WIDTH: 500 mm
MAGNET TYPE: Ferrite
NUMBER OF POLES: 6
SURFACE MAG. INTENSITY: 1800 Gauss
SHAFT TYPE: REMOVABLE,EQUIPPED WITH CLAMP BUSHINGS
OVERALL WEIGHT: 91,5 kg
CROWNING: NO
RUBBER LAYER: NO

IF NOT SPECIFIED ON DRAWING, LINEAR DIMENSION TOLERANCES PER ISO 2768-1 CLASS C , GEOMETRICAL TOLERANCES PER ISO 2768-1 CLASS L

Sheet: A2	Extra info:	General tolerance: ISO 2768 - cL
Drawn: PH	Weight (kg): 91,5	Drawn according: ISO268; ISO1101; ISO2553
Date: 22.02.2019		Status:
Predecessor:		Customer reference number:
Quick search: XRHR D219		Product key: RHP-F219A06-050-RSD-BA
Description: Magnetic headroller, Ferrite, D219 - W550		Part number: RHAF22050000
		Rev: B