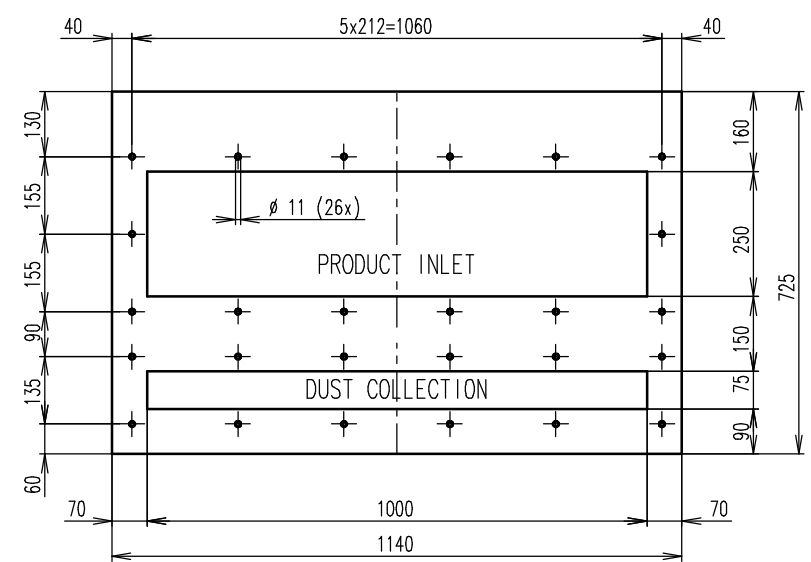
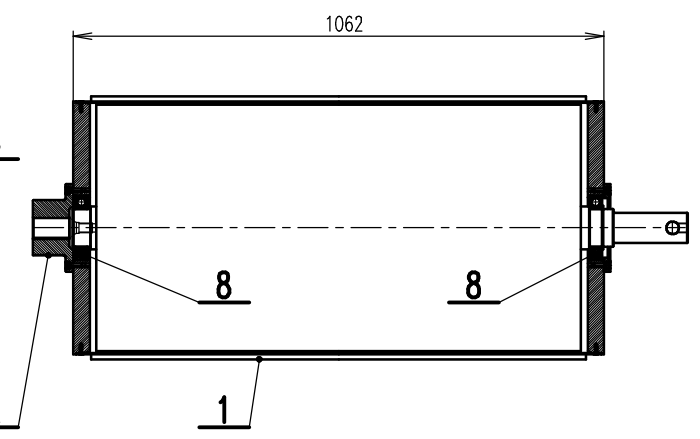
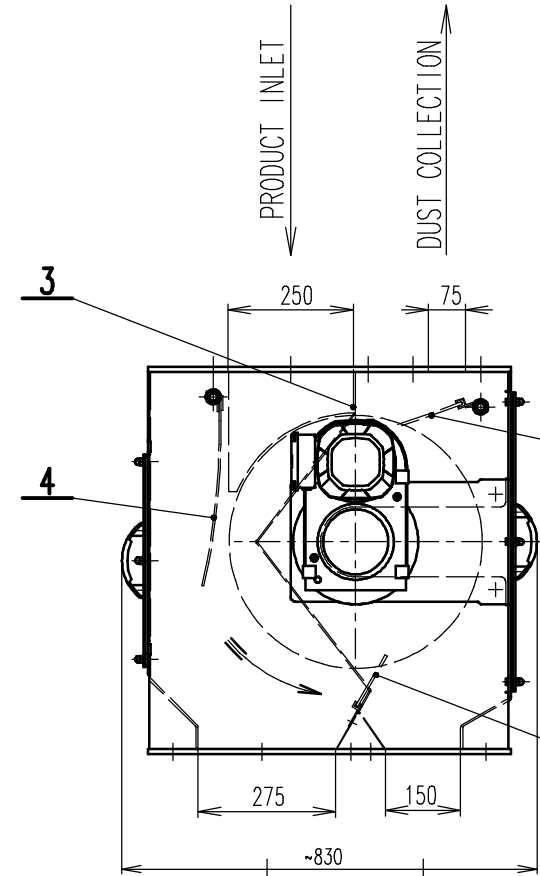
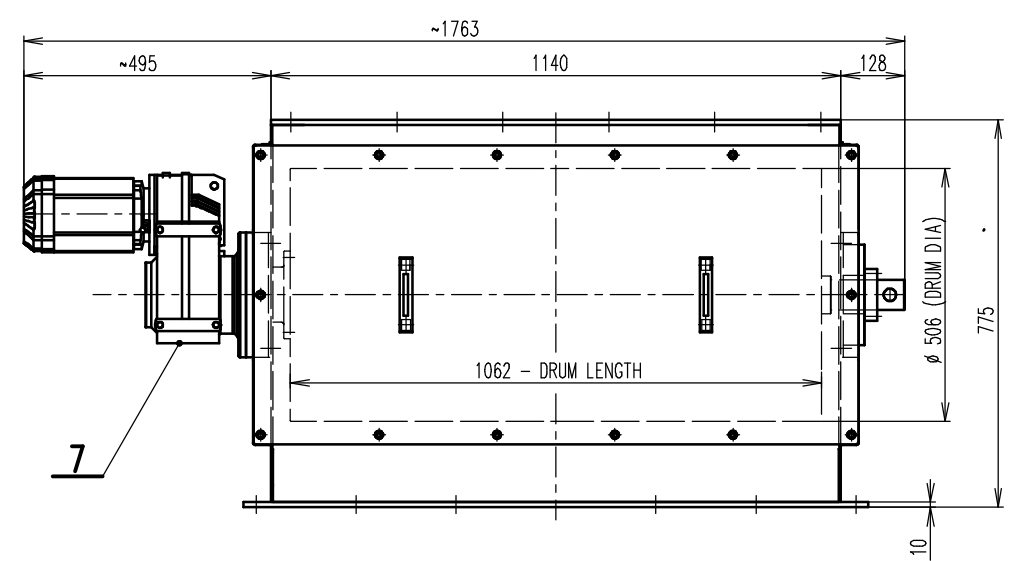
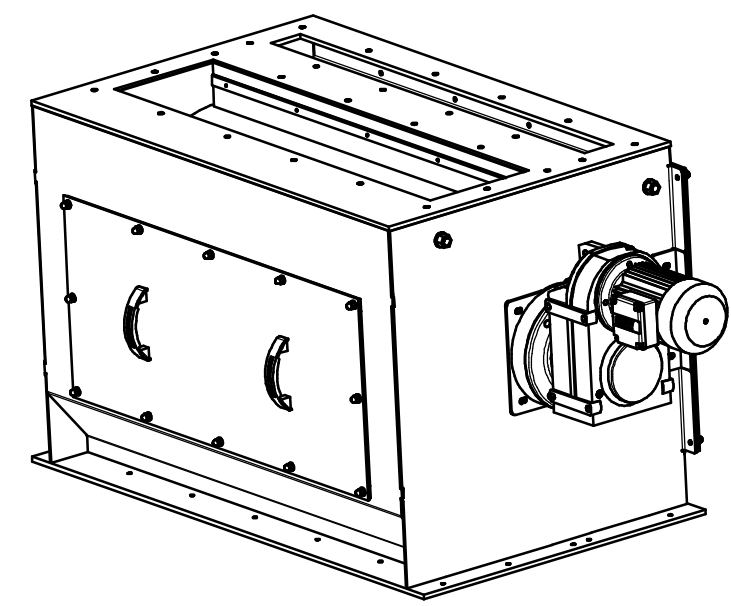


BOTTOM FLANGE



TOP FLANGE

GEARED BOX SEW FF67DRE80M4,
0,75kW, 21 RPM

DRUM SPEED = CCA 33 m/min
CAPACITY = CCA 180 m³/Hr

Position	Reference number	Specification	Size 1	Size 2	Material	Unit	Number	Mass
8	15_0406215	BEARING 6215-2RS					2	1.2
7	MH07502007	SEW FF67DRE80M4, i=67,65, P=0,75kW				SEW	1	50
6	991_060001_B	TOP BRUSH STRIP FOR SRTK100054	1020				1	1.05
5	991_000001_B	BOTTOM BRUSH STRIP FOR SRTK100054	1090				1	1.1
4	991_020002	RUBBER FLAP FOR SRTK100054	1020	300	PRYŻ		1	1.5
3	991_010009	INLET RUBBER SLAT FOR SRTK100054	1000	80			1	0.25
2	723_020002	DRIVE SHAFT SRTK160054w	89		11523		1	6.55
1	992_020000	DRUM SHELL SRTM100054					1	40

General Tolerances (not tol. measures) ISO 2768 -	General Tolerances on weld length 0/20%	Drawing rules acc. ISO 286 ISO 1101 ISO 1302 ISO 2553	
Drawn: LF	Scale: 1:10	Order:	Quant:
Date: 15.01.2013	Status:	Partorder:	
Title: SPARE PARTS FOR SRTK100054w VALID FOR SRTK100054w.D (ASSEMBLY 991_000000.C)			
GOUDSMIT® Magnetic systems		Number: SRTK100054w_SP	Rev: A