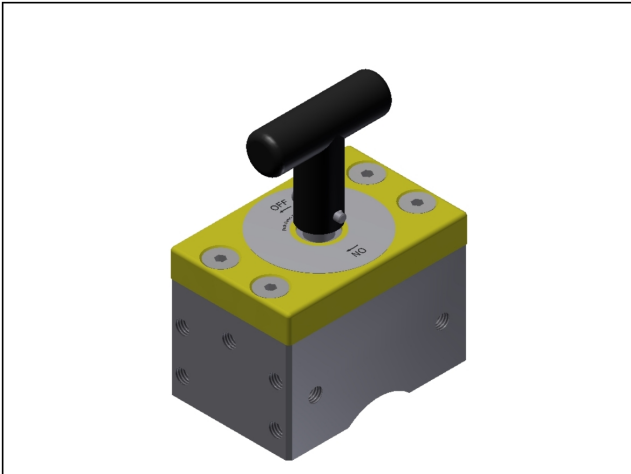


Switchable welding magnets

HMS-MAGSQUARE1000

SKU: MS-8100099



Product Features

Description	MagSquare welding magnet
SKU	MS-8100099
Product key	HMS-MAGSQUARE1000
Switching	Manual
Max. holding force	4500 N
Interface/connection dim's	Threaded hole M10 (12x)
Surface treatment/finishing	Painted (partially)
Colour	Yellow / - (not painted)
Min./max. ambient temperature	-20 to 80 °C
Dust/water protection class	IP41
Magnetic system	Permanent Neoflux® magnet
Depth	108 mm
Width	72 mm
Height	142 mm
Weight	3.5 kg