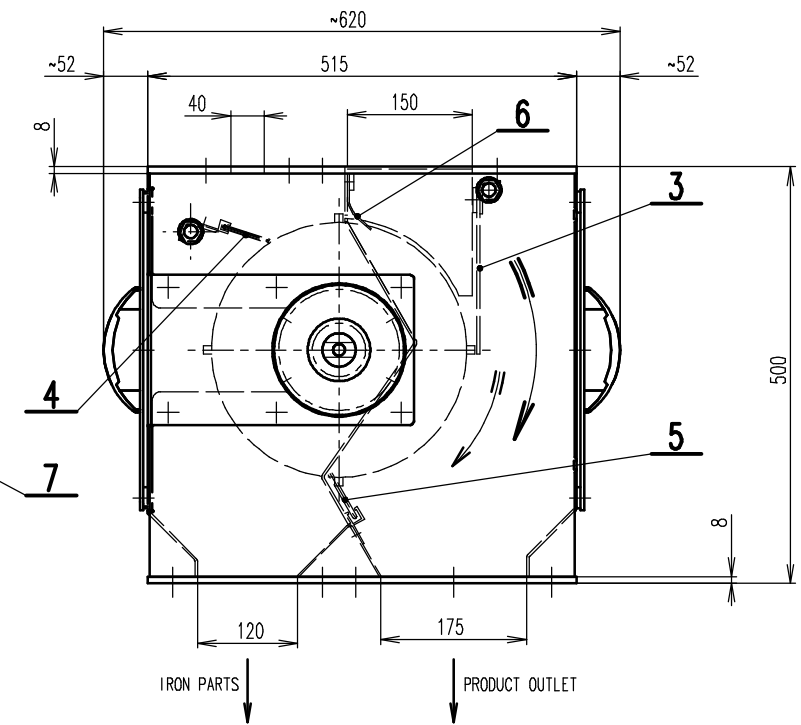
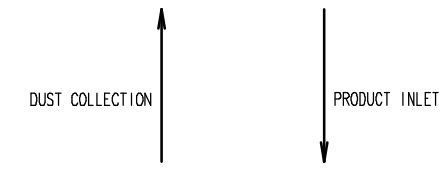


| | | |
|--------------|----------|---|
| Revis. Name: | JKA | ORIGINAL DRAWING |
| A Date: | 15.09.08 | VALID FOR ASSEMBLY C74_000000_B |
| Revis. Name: | LF | DRIVE SEW RF37DRS71S4 (WAS RF37DT71D4), ADDED UPPER |
| B Date: | 31.10.09 | CLEANING BRUSH |

- GEARED BOX SEW RF37DRS71S4, i=55,76 (25 RPM),
 MOTOR 0,37kW, 400V, 50Hz, IP54,
 WORKING POSITION M1, SHAFT $\phi 25 \times 50$, FLANGE $\phi 160$,
 TERMINAL BOARD/BUSHING POSITION 0/x
 - DRUM SPEED 24 m/min



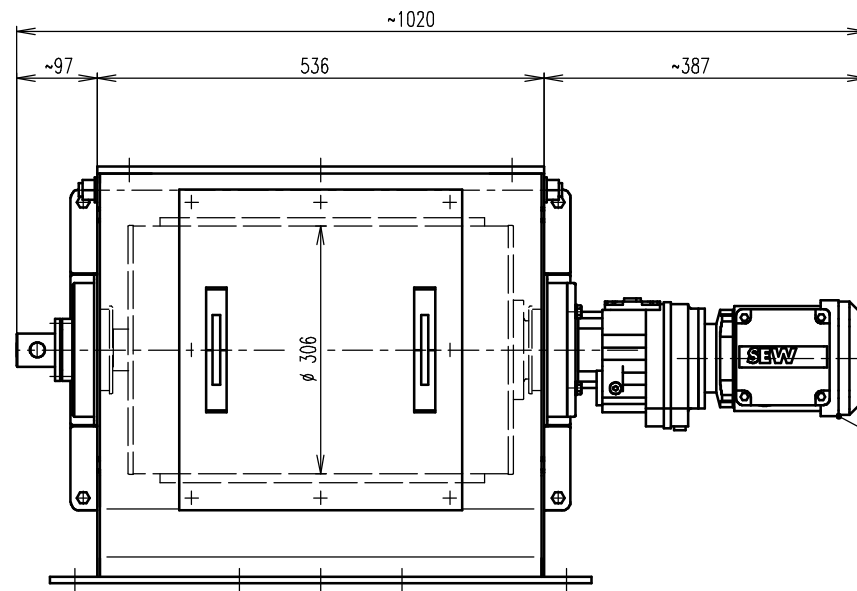
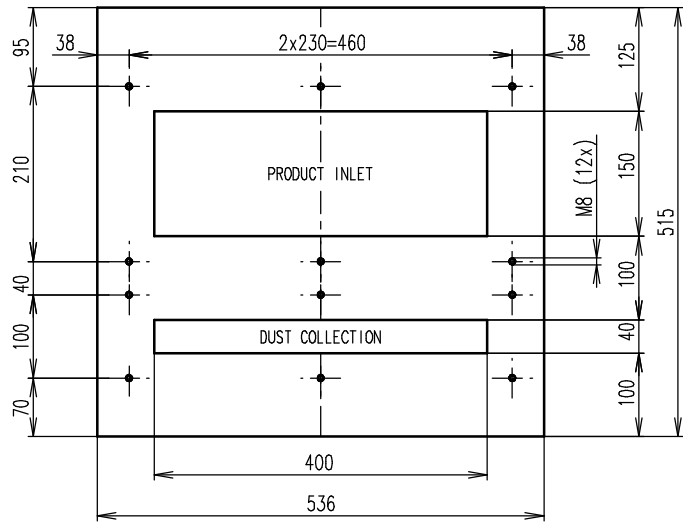
| Position | Reference number | Specification | Size 1 | Size 2 | Material | Unit | Number | Mass |
|----------|------------------|-------------------------------|--------|--------|----------|------|--------|------|
| 8 | 15_0406010 | BEARING 6010-2RS | | | | | 2 | 0.26 |
| 7 | MS03702504 | SEW RF37DRS71S4, P=0,37kW | | | | SEW | 1 | 18 |
| 6 | C74_010011_B | INPUT RUBBER SLAT | 400 | 77 | | | 1 | 0.1 |
| 5 | C74_000001 | BOTTOM BRUSH STRIP SRTK040034 | 525 | | | | 1 | 0.4 |
| 4 | F53_020001 | TOP BRUSH STRIP SRTK004260 | | | | | 1 | 1.7 |
| 3 | C74_060002 | RUBBER FLAP | | | | | 1 | 2.5 |
| 2 | 819_000003 | DRIVE SHAFT SRTM040034w | 62 | 11523 | | | 1 | 2 |
| 1 | 819_020000_B | SHELL SRTM040034w | | | | | 1 | 10.7 |

| | | | |
|---|---|---|--------|
| General Tolerances (not tol. measures) ISO 2768 - | General Tolerances on weld length 0/20% | Drawing rules acc. ISO 286 ISO 1101 ISO 1302 ISO 2553 | |
| Drawn: LF | Scale: 1:6 | Order: | Quant: |
| Date: 31.10.09 | Status: | Partorder: | |

Title: **SPARE PARTS FOR SRTK040034w**
 VALID FOR SRTK040034w_C (ASSEMBLY C74_000000_C)

GOUDSMIT® Magnetic systems
 Number: **SRTK040034w_SP B** Rev:

TOP FLANGE



BOTTOM FLANGE

