

Revis. Name: LF
A Date: 30.11.02

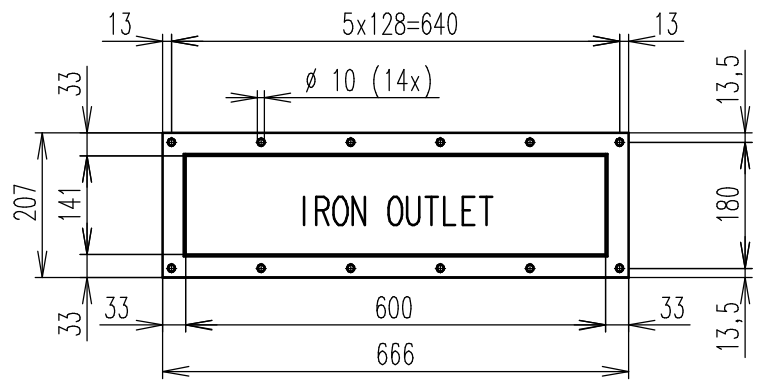
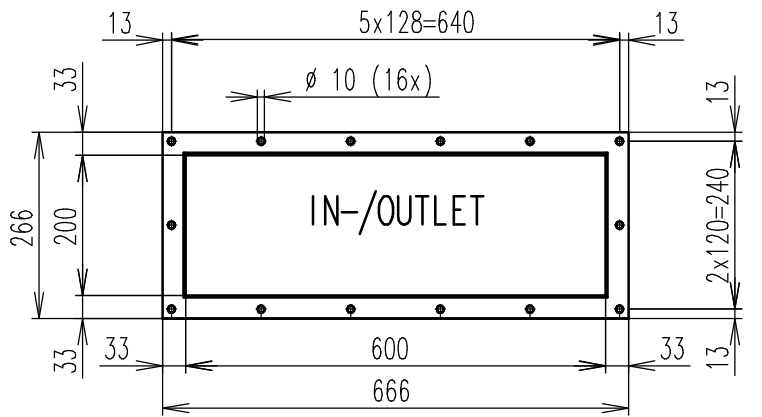
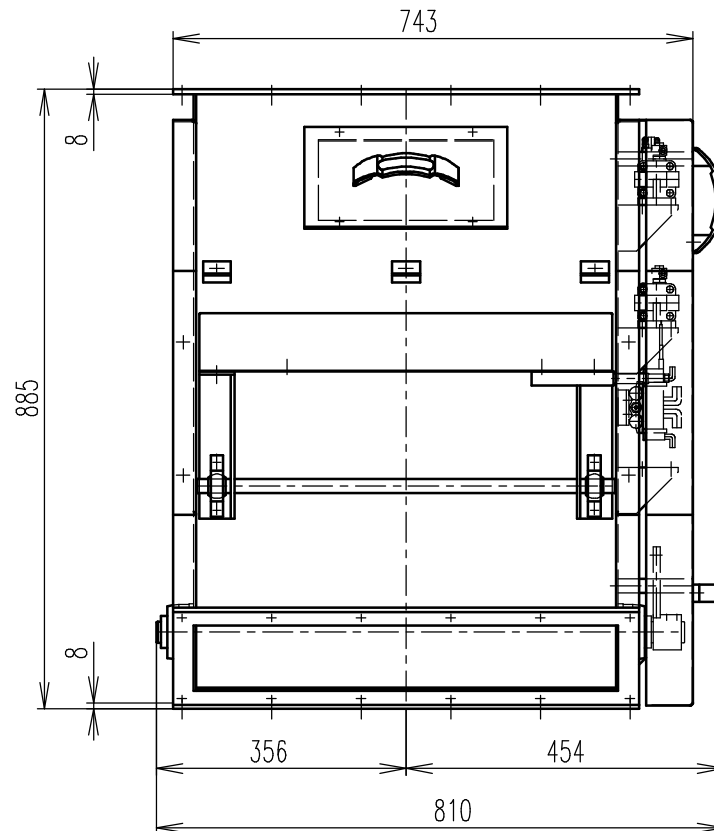
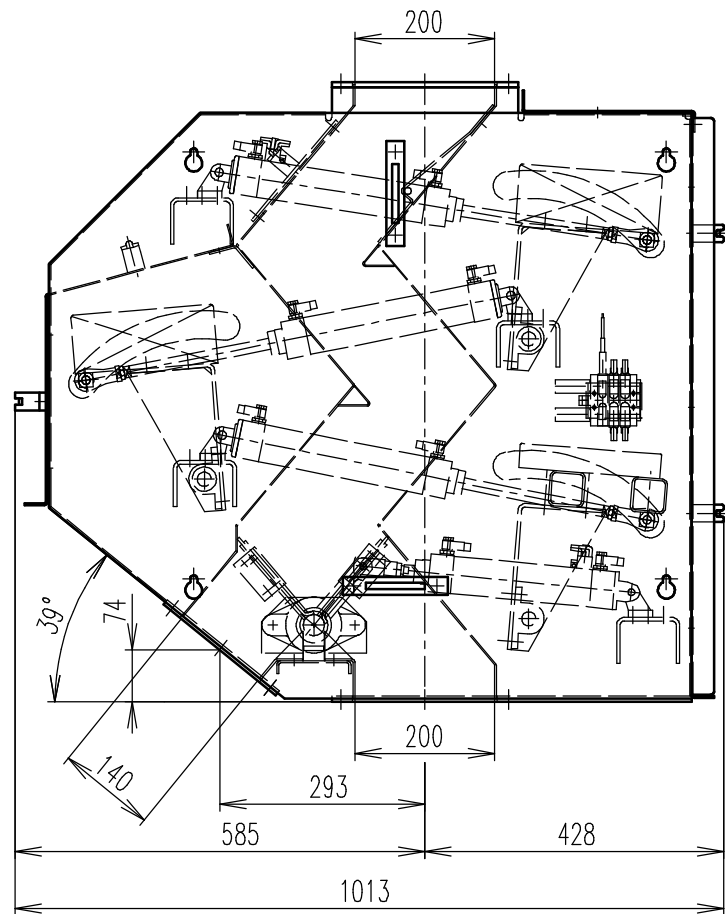
SOURCE DRAWING: SRKP060035 B

Revis. Name: LF
B Date: 17.04.12

WEAKER AND SHIELDING MAGNETS Nr.1 AND 2, NON MAGNETIC
 MAGNET COVERS, ALL CYLINDERS WITH MAGNETIC PISTON

Revis. Name: LF
C Date: 15.12.13

3rd STAGE NdFeB MAGNET, OVAERALL COVER OF PNEUMATIC
 ITEMS, ASSY OF PNEUMATIC SYSTEM UPGRADE



FESTO PNEUMATICS
 CLEANING CYCLUS BY CONSTANT SIGNAL
 FROM CONTROL ROOM OF 24V DC
 (SIGNAL FOR APPROXIMATELY 15 SECONDS)
 AIR SUPPLY 6 BAR

Reference WAMAG: 622_000000_D

General Tolerances (not tol. measures) ISO 2768 - cL	General Tolerances on weld lenght 0/20%	Drawing rules acc. ISO 286 ISO 1101 ISO 1302 ISO 2553	
Drawn: LF	Scale: 1:10	Order:	Quant:
Date: 15.12.2013	Status:	Partorder:	
Title: CASCADE 600 3-STEPS PNEUMATIC BASIC CE-EXECUTION, ELECTRIC CONNECTION 24V DC, 3rd STAGE NdFeB TOTAL WEIGHT 280 kg			
GOUDSMIT® Magnetic systems		Number: SRKP060035w	Rev: C