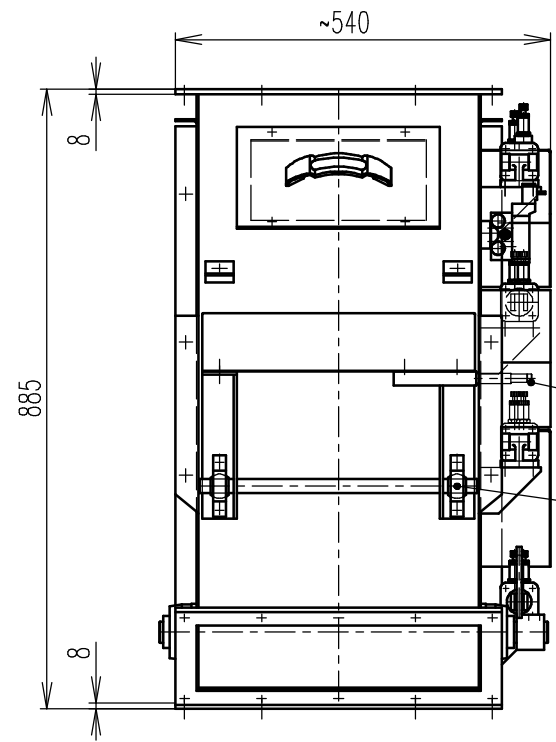
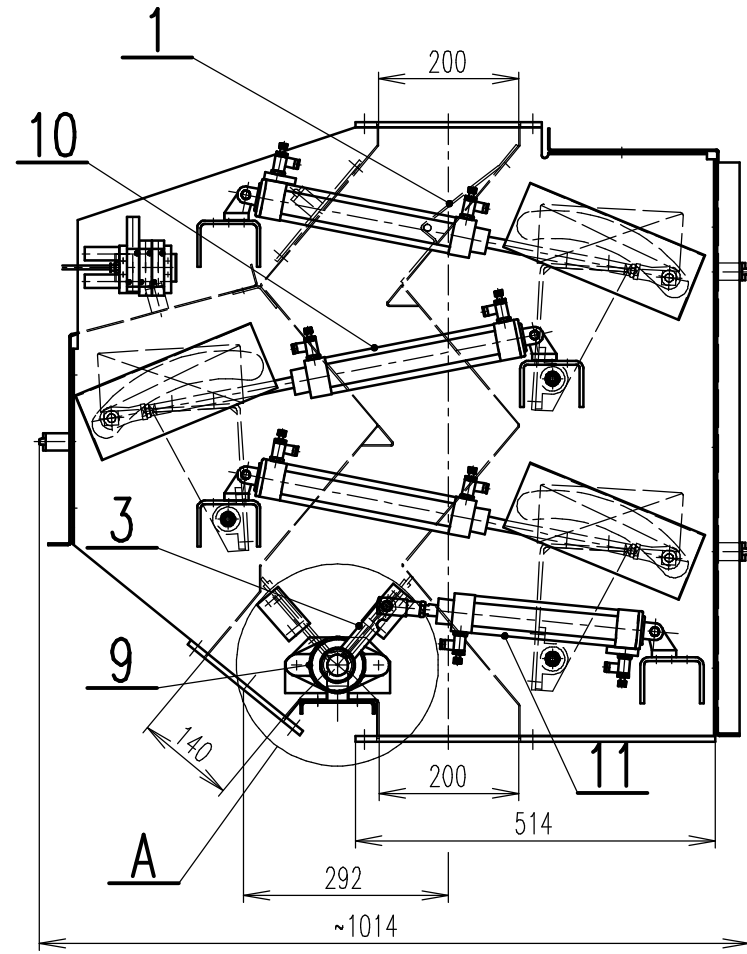


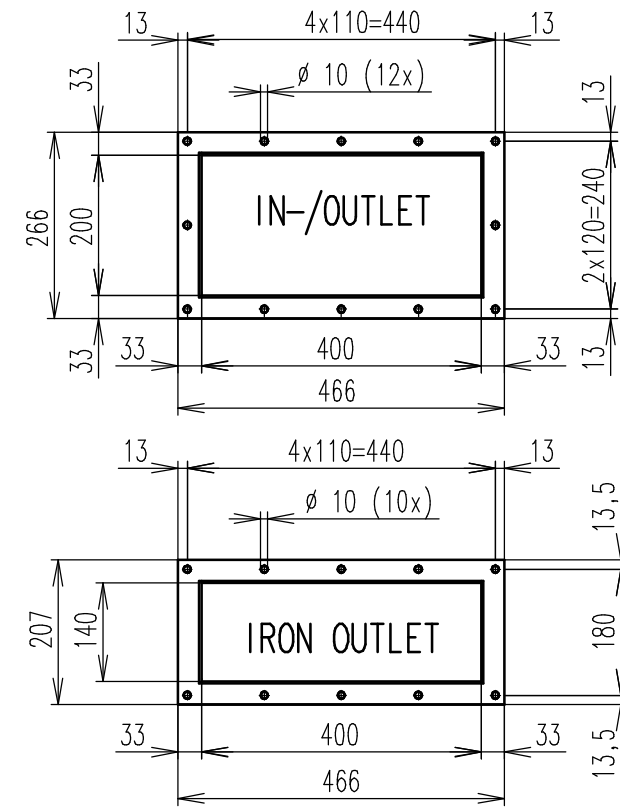
Změna Revis.	Provedl: Name: LF	ORIGINAL DRAWING
A	Datum: Date: 14.08.08	



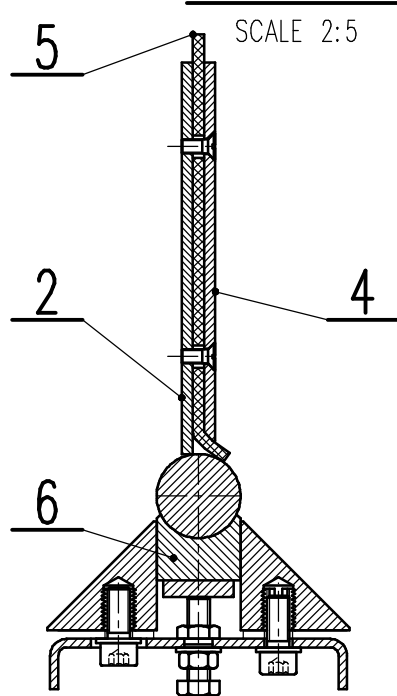
FESTO PNEUMATICS

CLEANING CYCLUS BY CONSTANT SIGNAL
FROM CONTROL ROOM OF 24V DC
(SIGNAL FOR APPROXIMATELY 15 SECONDS)

AIR SUPPLY 6 BAR



DETAIL "A"



Position	Reference number	Specification	Material	Unit	Quantity	Weight
11	163357	CYLINDER FESTO DNC-40-160PPV			1	
10	163358	CYLINDER FESTO DNC-40-200PPV			3	
9	15_8400030	BEARINGS ASSEMBLY INA PCFT30			2	0.77
8	15_9000067	BALL BEARING IGUS JAM-20			6	0.15
7	461_020001	AXLE FOR MOVING MAGNET			3	0.43
6	693_040003	VALVE AXLE SUPPORT			1	0.33
5	693_040002	VALVE FLAT NEOPRENE WASHER SRKP0400			1	0.31
4	693_040001_B	VALVE CLAMPING PLATE SRKP0400			1	1.6
3	622_040400_B	VALVE CONTROL LEVER			1	0.6
2	693_040100_B	VALVE WELD ASSY SRKP0400			1	4.7
1	693_010600_B	WEDGE PLATE FOR SRKP040035			1	2.9

General Tolerances (not tol. measures) ISO 2768 - cL	General Tolerances on weld length 0/20%	Drawing rules acc. ISO 286 ISO 1101 ISO 1302 ISO 2553	
Drawn: LF	Scale: 1:10	Order:	Quant:
Date: 14.08.2008	Status:	Partorder:	

Title; *SPARE PARTS FOR SRKP040035*

GOUDSMIT®
Magnetic systems

Number: *SRKP040035_SP* Rew: *A*