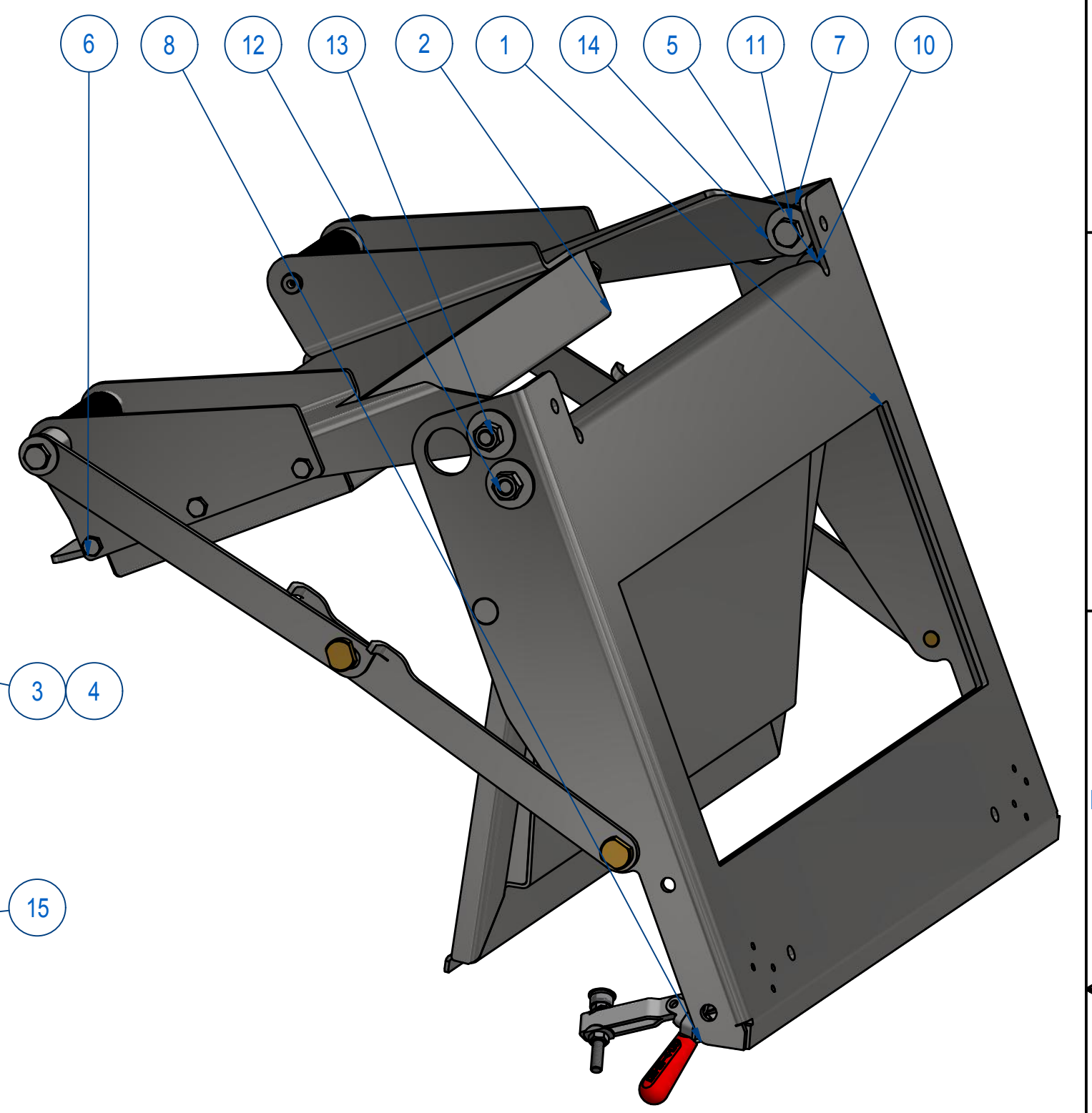
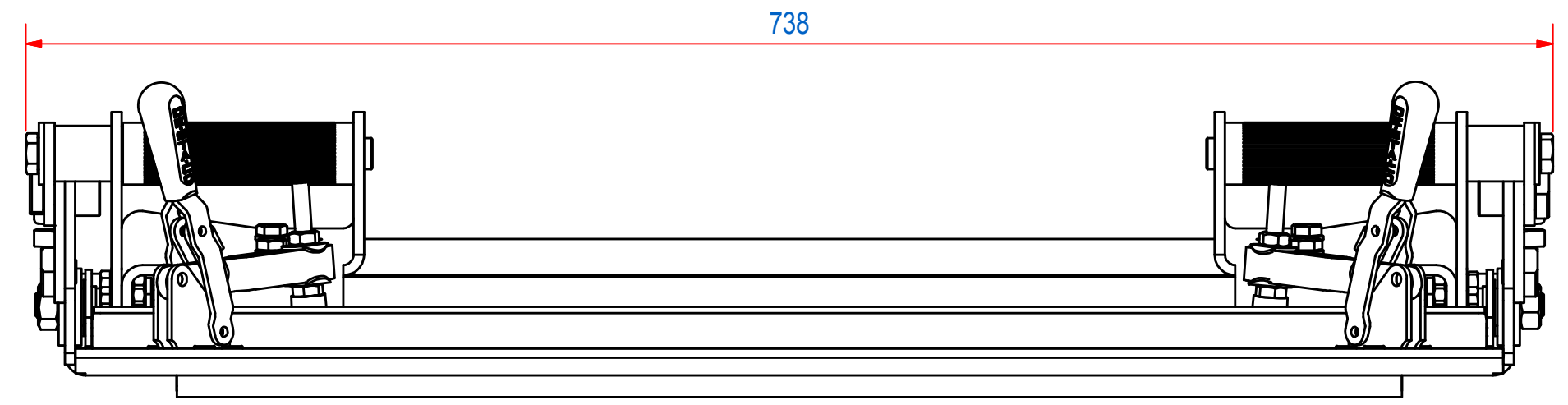
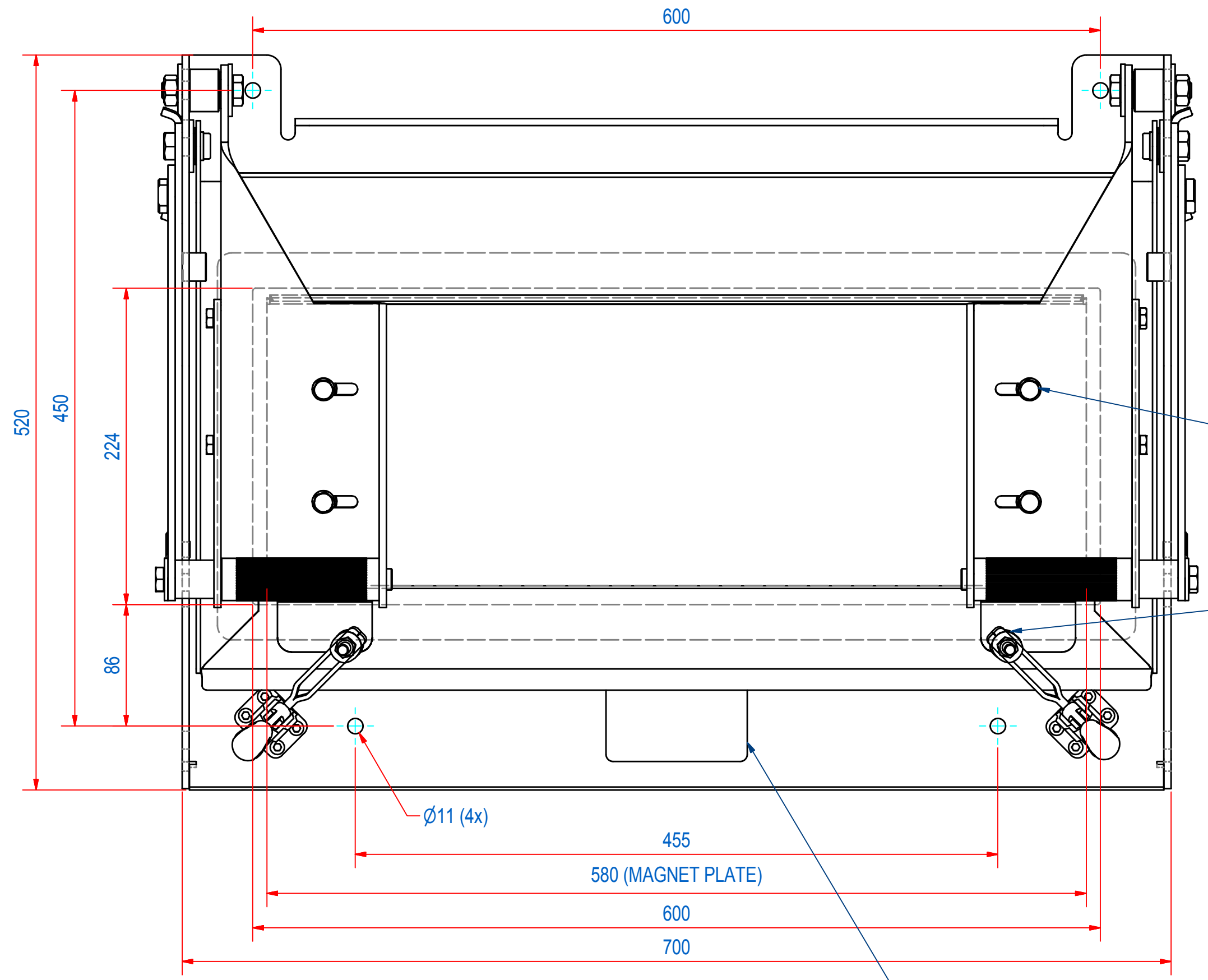
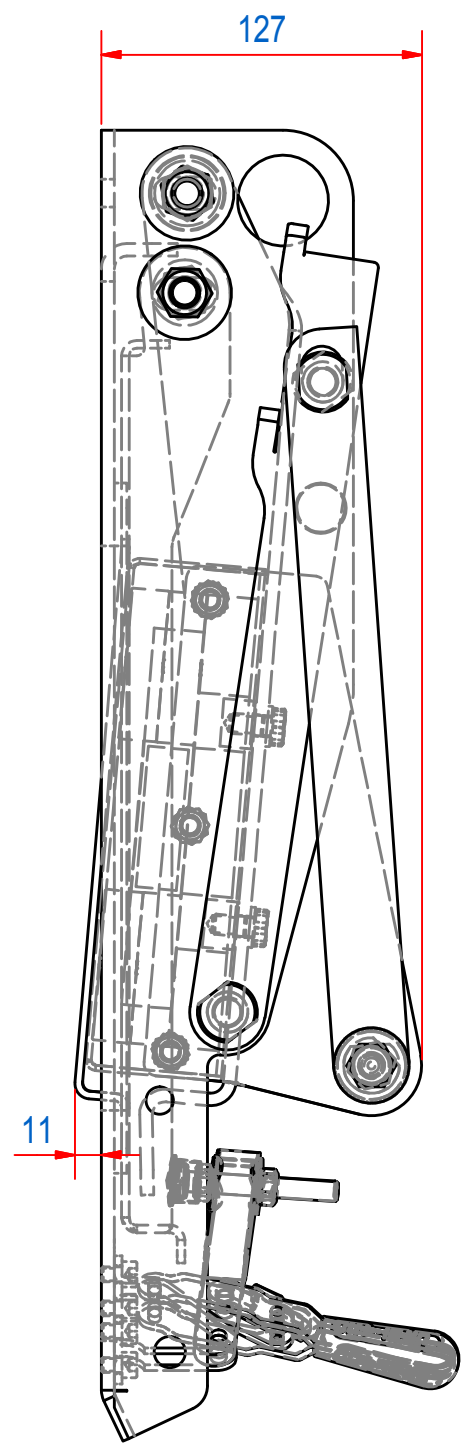


REV	DATE	BY	DESCRIPTION
-	21-5-2014	FS	COPY FROM E0014217
A	20-10-2017	CR	TYPE PLATE ADDED



SAFETY BLOCK ADDED ACCORDING TO MODEL E0014813

ITEM	QTY	PART NUMBER	DESCRIPTION	Dimensions
15	2	1009.00004	COVER PLUG HOLE Ø16.8	
14	8	70.9200005	WASHER 3xD M12x37 - A2	M12x37
13	4	60.0200012	NUT, HEX M12 - A2	M12
12	2	51.0212020	SCREW, HEX SH M12 x 20 - A2	M12 x 20
11	2	50.1212050	BOLT, HEX M12x50 - A2	M12x50
10	4	15.0001820	BEARING IGLIDUR GFM-1820-06	
9	1	E0084040	SCH__CHUTE NO ATEX	
8	1	E0013217	ASSY GROUND PLATE 600	
7	2	E0013049	BUSH D30xd12xH27,5 AISI304	
6	1	E0013165	DOUBLE GRIP CHUTE MAGNET	
5	1	E0013220	ASSY EXTRACTOR PLATE 600	
4	4	70.0200008	WASHER M 8- A2	M 8
3	4	50.1208016	BOLT, HEX M8x16 - A2	M8x16
2	1	SVMN020580	SVM-N-204x55-0580-B-F1M	
1	1	E0013222	GASKET FOR VMN22-600	

RAW MAT.	QTY	MAT. NUMBER	MAT. DESCRIPTION	LENGTH (mm)	WIDTH (mm)
	1				

Sheet: A2	Extra info:	General tolerance: ISO 2768 - mK
Drawn: FS	Weight (kg): 66,6	Drawn according: ISO268; ISO1101; ISO2553
Date: 29-1-2014		Status: Standard
Spare part: False		Customer reference number:
Quick search: VMMN22-600	GOUDSMIT MAGNETIC SYSTEMS	File number: E0084504 Rev: A
Description: SCH-M-N-204x55-0600-B-B-B	<small>© All rights reserved. Reproduction is not permitted without written permission of GOUDSMIT Magnetic Systems BV</small>	Part number: E0013215 Rev: A