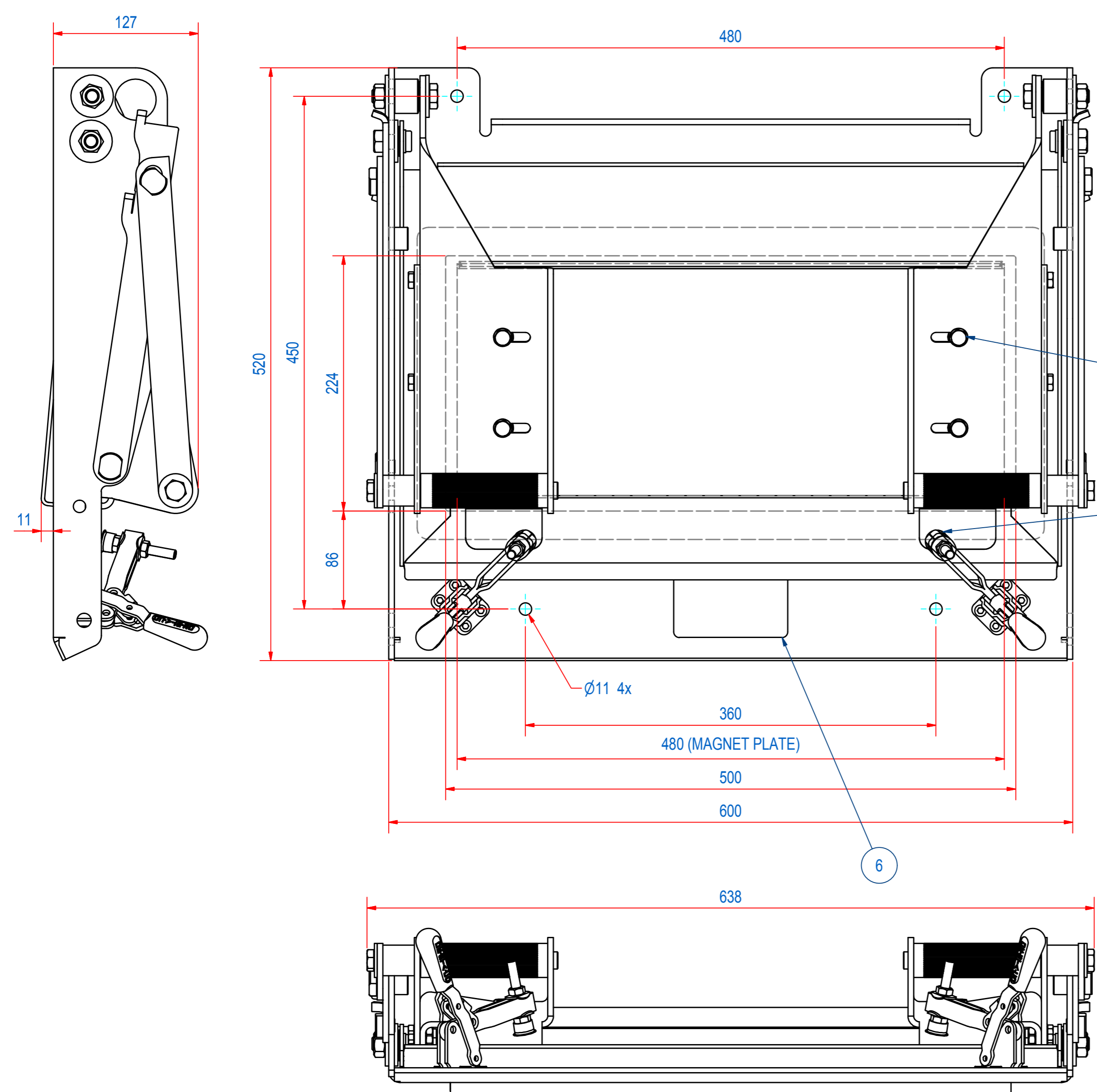
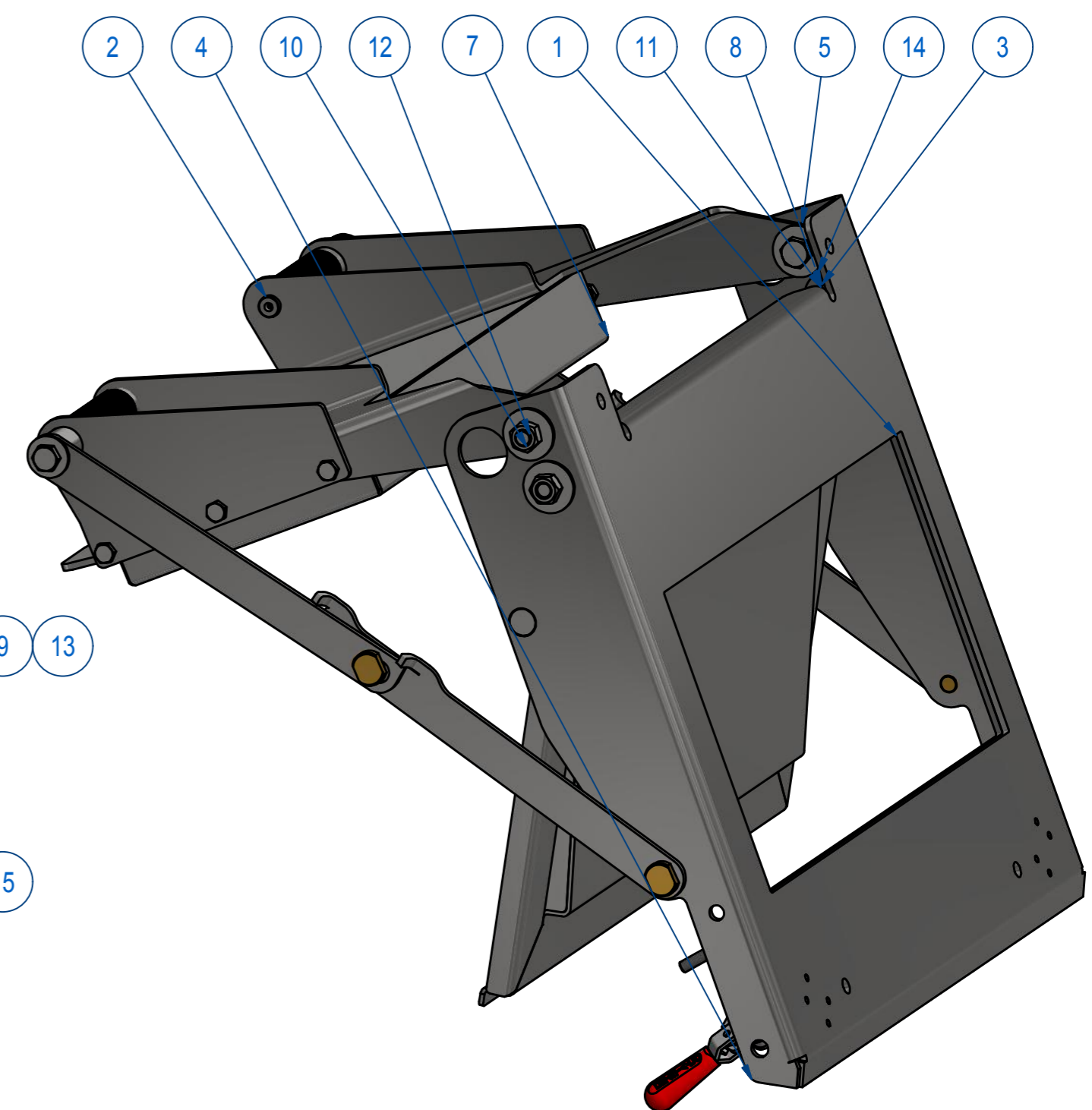


REV	DATE	BY	DESCRIPTION
B	21-5-2014	FS	HAND GRIP CHANGED
C	18-8-2015	CR	COVER PLUG (ITEM 14) ADDED
D	11-10-2017	CR	TYPE PLATE ADDED



SAFETY BLOCK ADDED ACCORDING TO MODEL E0014813

ITEM	QTY	PART NUMBER	DESCRIPTION	Dimensions
15	2	1009.00004	COVER PLUG HOLE Ø16.8	
14	8	70.9200005	WASHER 3xD M12x37 - A2	M12x37
13	4	70.0200008	WASHER M 8- A2	M 8
12	4	60.0200012	NUT, HEX M12 - A2	M12
11	2	51.0212020	SCREW, HEX SH M12 x 20 - A2	M12 x 20
10	2	50.1212050	BOLT, HEX M12x50 - A2	M12x50
9	4	50.1208016	BOLT, HEX M8x16 - A2	M8x16
8	4	15.0001820	BEARING IGLIDUR GFM-1820-06	
7	1	SVMN020480	SVM-N-204x55-0480-B-F1M	
6	1	E0084040	SCH CHUTE NO ATEX	
5	2	E0013049	BUSH D30xd12xH27,5 AISI304	
4	1	E0014332	ASSY GROUND PLATE 500	
3	1	E0014337	ASSY EXTRACTOR PLATE 500	
2	1	E0013165	DOUBLE GRIP CHUTE MAGNET	
1	1	E0014352	GASKET FOR VMN22-500	

RAW MAT.	QTY	MAT. NUMBER	MAT. DESCRIPTION	LENGTH (mm)	WIDTH (mm)
1	1				

Sheet: A2	Extra info:	General tolerance: ISO 2768 - mK
Drawn: FS	Weight (kg): 58,3	Drawn according: ISO268; ISO1101; ISO2553
Date: 7-3-2014		Status: Standard
Spare part: False		Customer reference number:
Quick search: VMMN22-500		File number: E0084039
Description: SCH-M-N-204x55-0500-B-B-B		Part number: E0014327



© All rights reserved. Reproduction is not permitted without written permission of GOUDSMIT Magnetic Systems BV