

## Statement of Exclusion – Chute Magnet SCHx Pneumatic

With respect to ATEX Directive 2014/34/EU

We,

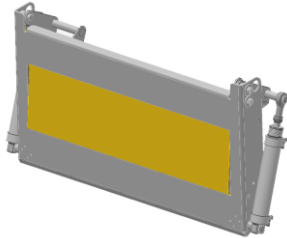
Goudsmit Magnetic Systems B.V.  
Petunialaan 19  
5582 HA Waalre  
The Netherlands

herewith declare, on our own responsibility, that the machinery:

Article description: **Pneumatically Operated Chute Magnet**  
Series: **SCHx**

is free of own ignition sources and out of scope of the ATEX Directive.

The basic product, without the pneumatic cylinders or additional sensors installed, does not have any moving parts other than pneumatically operated slow moving parts, there are no electrical circuits or other parts that would provide potential ignition source under normal operation, expected malfunction or rare malfunction and the device is therefore out of scope of the ATEX directive 2014/34/EU. Hence the equipment will get no EX-marking.



The area marked in yellow, contacts the inside of the chute, and can safely be used in contact with zone 20, the outside of the equipment with zone 21, with the provision the following conditions are observed:

- Do not apply isolating layers/coatings with breakdown voltages  $> 4$  kV to the (here yellow marked) product contact surface of the equipment.
- Before longer standstill empty and clean the equipment.
- Screw connections, if any, must be secured against loosening.
- Provide a means for equalisation of potential electrostatic charges. The electrical resistance to earth must be below  $1$  M $\Omega$ . The electrical resistance between equipment and metal product chute, when in direct contact, is usually less than  $10\Omega$ . An electrical resistance of less than  $25\Omega$  is still acceptable. If you measure a larger resistance, a braided bonding cable (or other means) can be applied. This should have a resistance of less than  $25\Omega$ .

The smoulder temperature of the dust should exceed the equipment temperature (medium temperature) at least by  $75$  K. The ignition temperature of the dust must be at least  $1.5$  times higher than the equipment temperature (medium temperature).

If one or more ATEX certified add-on components are installed on the outside of the equipment, then the outside of the product chute will be suited for use in the ATEX zones corresponding with the resulting ATEX category of the added components.

Waalre, The Netherlands, 27-8-2019

Signature manufacturer:

on behalf of Goudsmit:

Alwin de Bruine,  
Compliance engineer