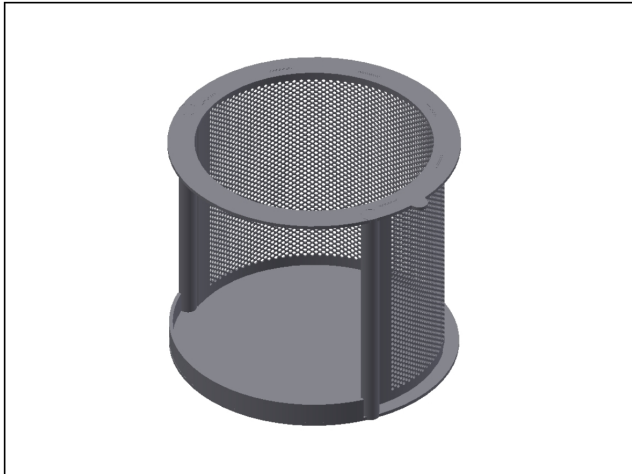


## Various accessories

### SIEVE SFND DN80 d2 316L

SKU: E0077807



## Product Features

<b>Description</b>	Sieve
<b>SKU</b>	E0077807
<b>Product key</b>	SIEVE SFND DN80 d2 316L
<b>Application</b>	For filtering things that cannot be captured with a magnet and protection of the magnetic bars. For installation in double-walled magnetic filters (type SFND).
<b>Material housing</b>	AISI316L (SS 1.4404)
<b>Surface treatment/finishing</b>	S1: Grit blasted, Ra 3 µm (interior/exterior)
<b>Welds</b>	WM: all welds: completely welded
<b>Additional info</b>	Mesh size Ø2 mm - for DN80. A sieve filters irregularities such as paper, plastic particles and stones from the product flow. This is normally a separate unit mounted upstream of the magnetic filter in the production process. This sieve is designed to be placed directly in the double-walled magnetic filter, which reduces operations, costs, time and heat loss. The magnetic bars and sieve can be cleaned in a single operation.
<b>Diameter</b>	160 mm
<b>Height</b>	134 mm
<b>Weight</b>	0.75 kg
<b>Summary</b>	Ø2 mm - SFND DN80