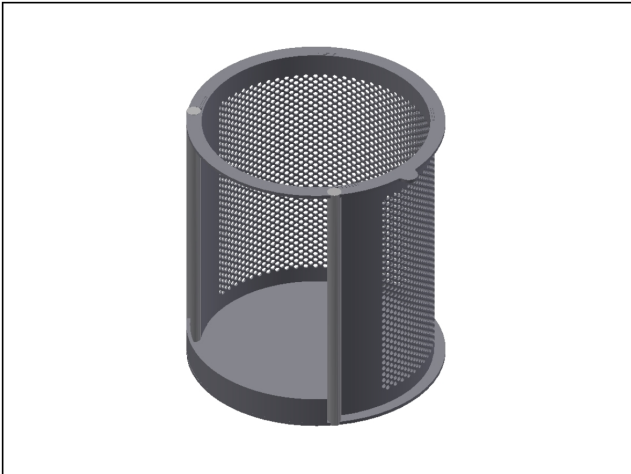


Various accessories

SIEVE SFND DN50-65 d2 316L

SKU: E0072350



Product Features

Description	Sieve
SKU	E0072350
Product key	SIEVE SFND DN50-65 d2 316L
Application	For filtering things that cannot be captured with a magnet and protection of the magnetic bars. For installation in double-walled magnetic filters (type SFND).
Material housing	AISI316L (SS 1.4404)
Surface treatment/finishing	S1: Grit blasted, Ra 3 µm (interior/exterior)
Welds	WM: all welds: completely welded
Additional info	Mesh size Ø2 mm - for DN50/65. A sieve filters irregularities such as paper, plastic particles and stones from the product flow. This is normally a separate unit mounted upstream of the magnetic filter in the production process. This sieve is designed to be placed directly in the double-walled magnetic filter, which reduces operations, costs, time and heat loss. The magnetic bars and sieve can be cleaned in a single operation.
Diameter	107 mm
Height	115 mm
Weight	0.29 kg
Summary	Ø2 mm - SFND DN50/65