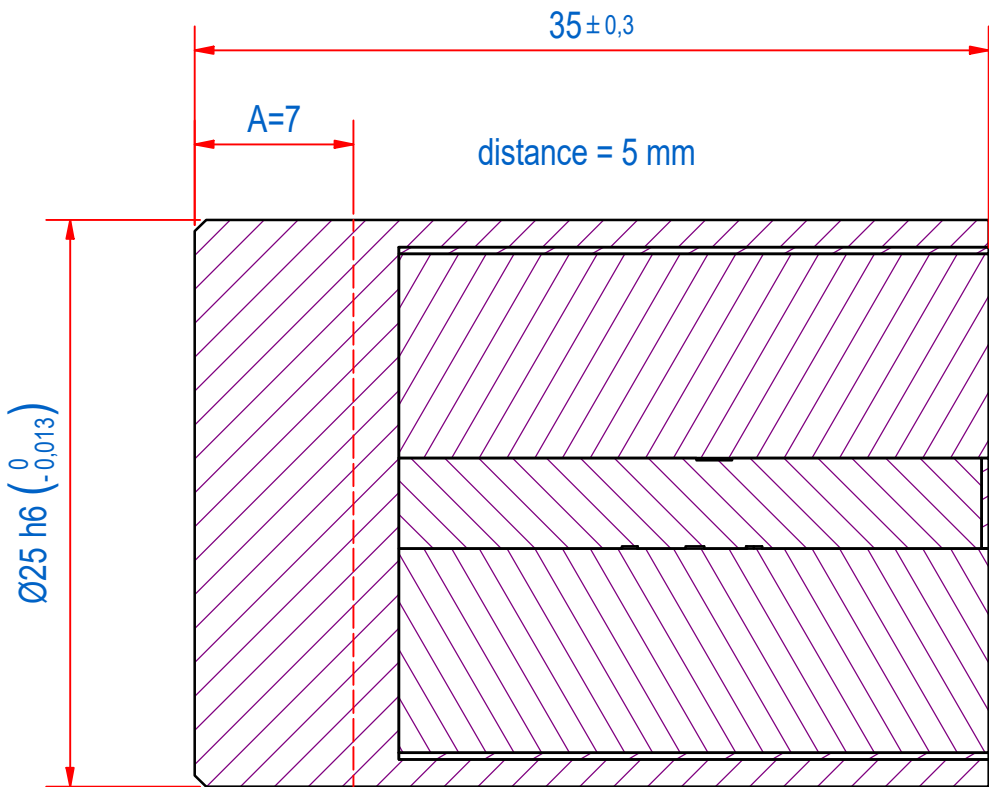
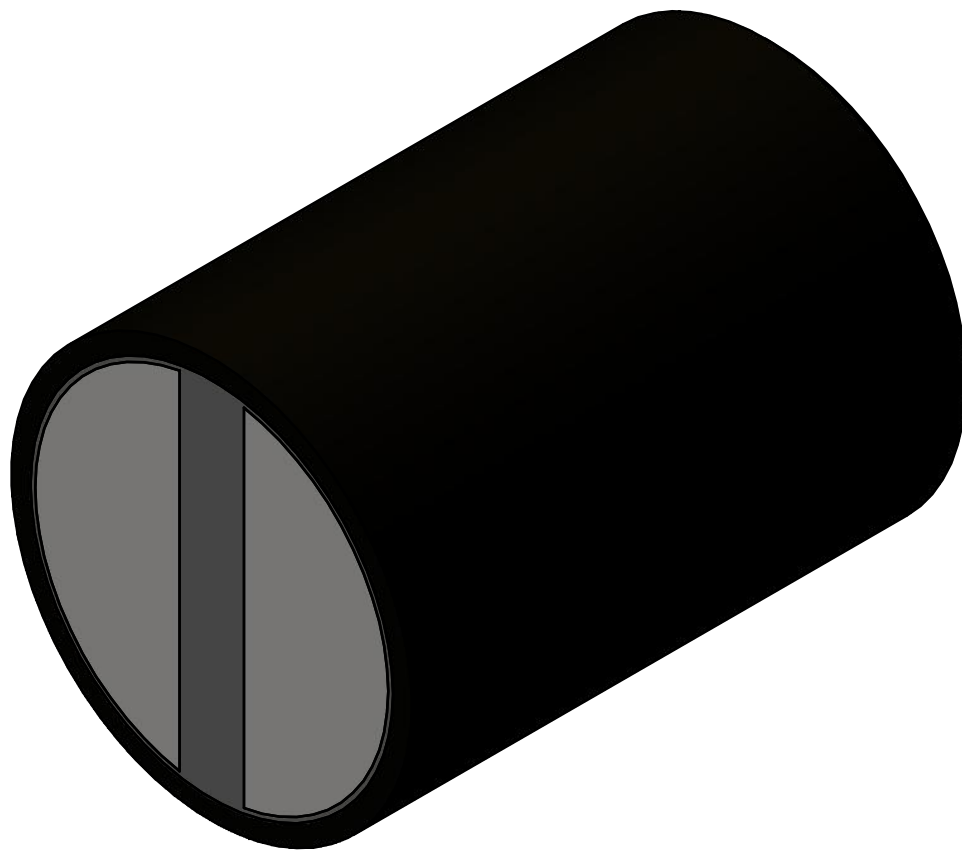
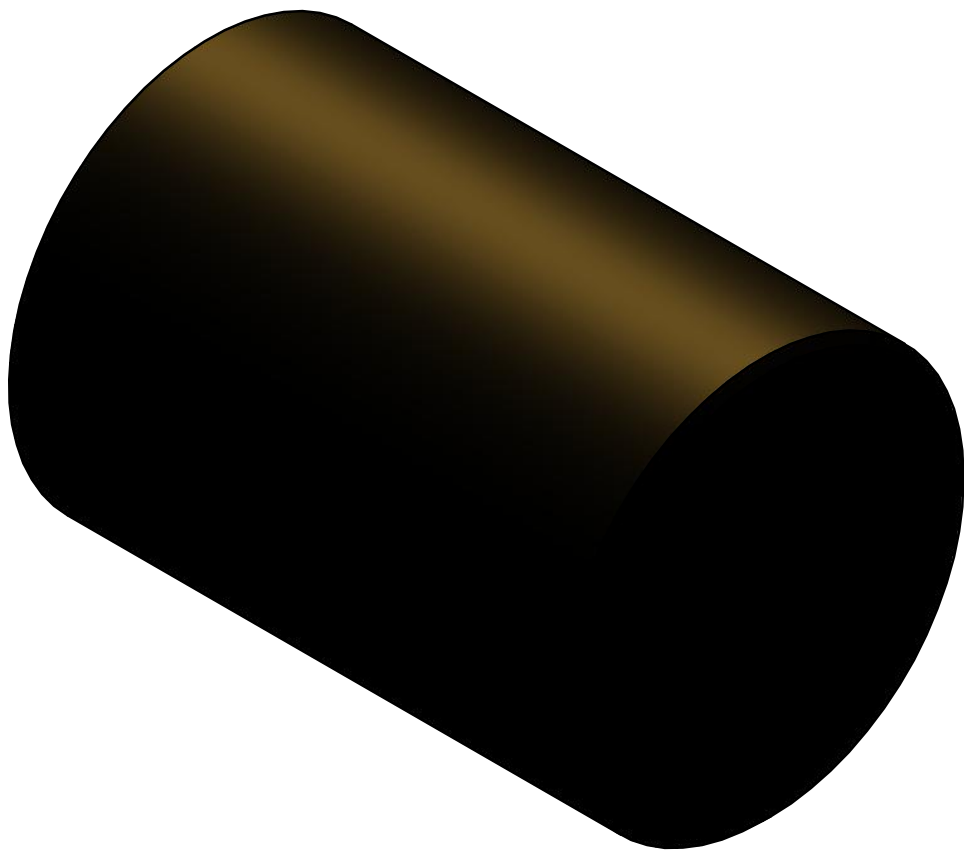
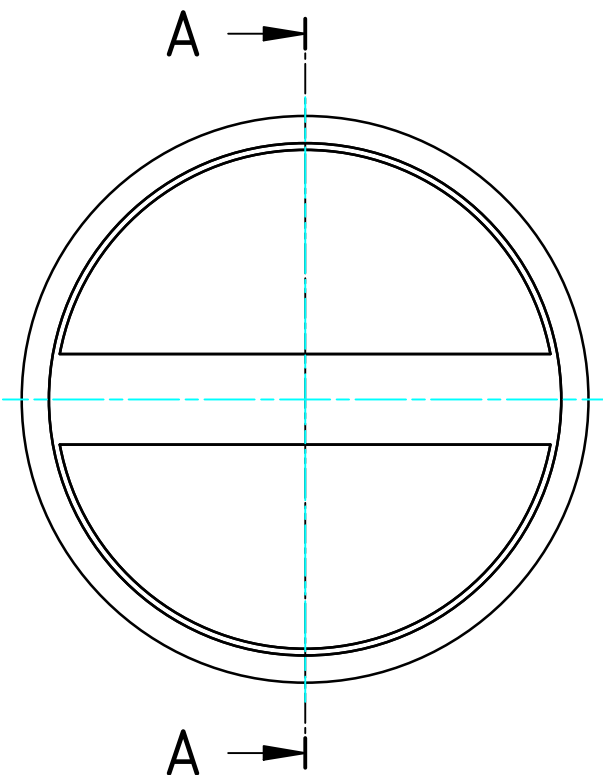


DOC.NR.	REV	DATE	BY	DESCRIPTION
GM17007	-	27-9-2019	PV	ORIGINAL DRAWING



A-A



DIRECT MOUNTING OF THE BAR MAGNET IN IRON REDUCED THE HOLDING POWER BY UP TO 15% DUE TO MAGNETIC SHORT CIRCUITING. TO AVOID THIS CERTAIN DISTANCES NEED TO BE MAINTAINED BETWEEN THE BRASS CASING OF THE BAR MAGNET AND THE IRON. THE DISTANCE ARE ALSO TO BE ADHERED TO IF THE BAR MAGNET WAS SHORTENED BY DIMENSION A. PLEASE REFER TO THE DISTANCE GIVEN IN THE DRAWING (distance mm).

RAW MAT.	1	Quantity	Material Number	Material Description	Length (mm)	Width (mm)
Drawn:	PV	Sheet:	A2	Extra info: POTMAGNET SAMARIUM-COBALT	General tolerance:	ISO 2768- mK
Date:	6-9-2019	Weight (kg):	0,13		Drawn according:	ISO268; ISO1101; ISO2553
Spare part:	False	Source:			Status:	Released
Quick search:	POTGM				Customer reference number:	
Description:	PM-BA-S-BR-D25h6x35				Document number:	GM17007
					Part number:	GM17007
					Rev:	-