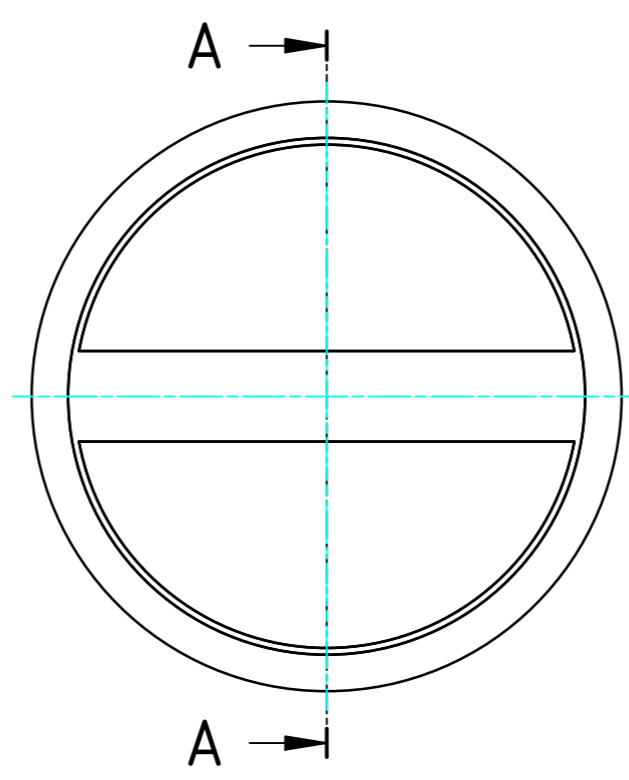
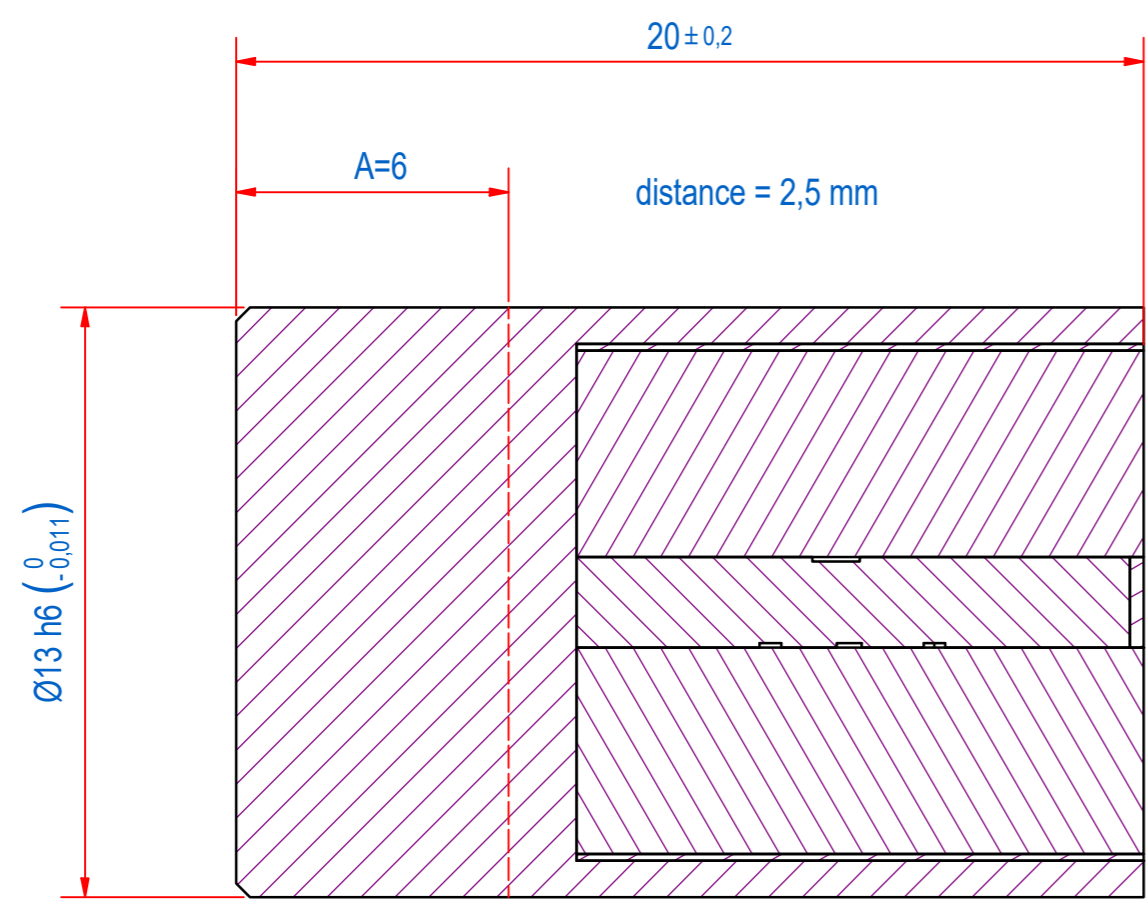
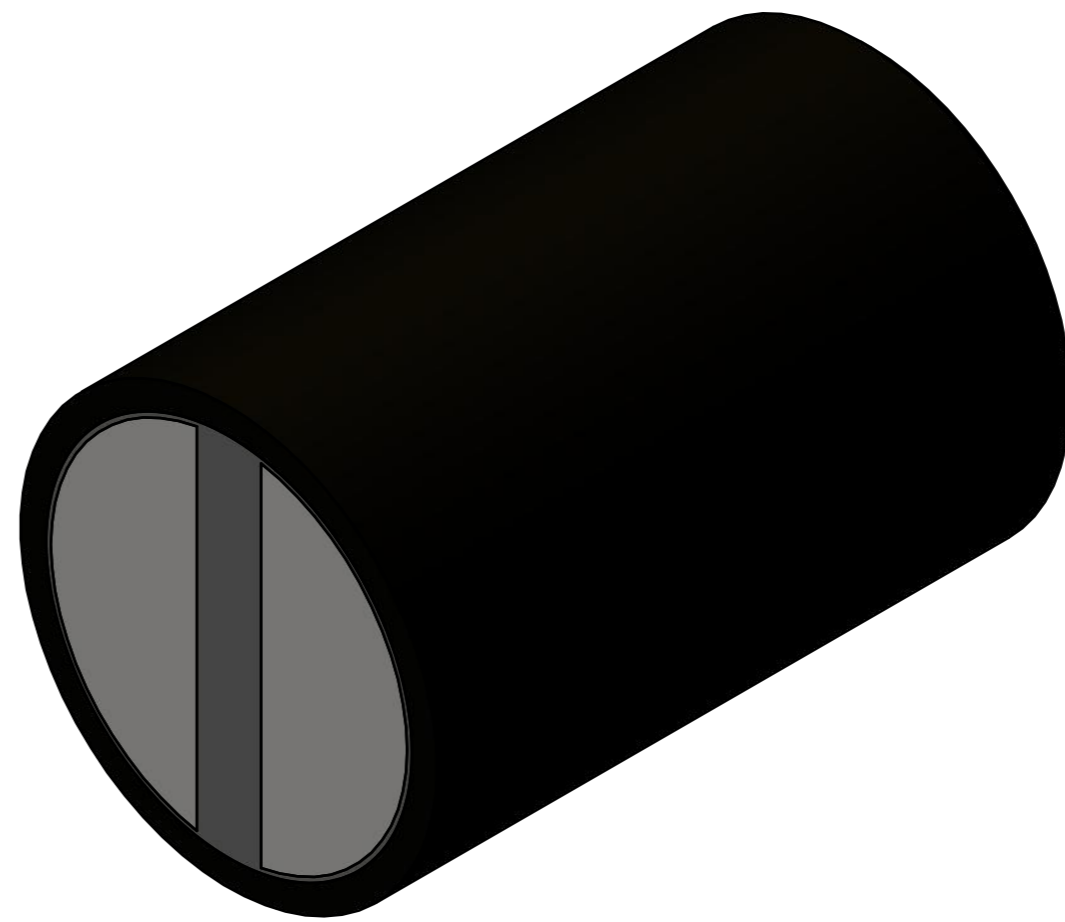
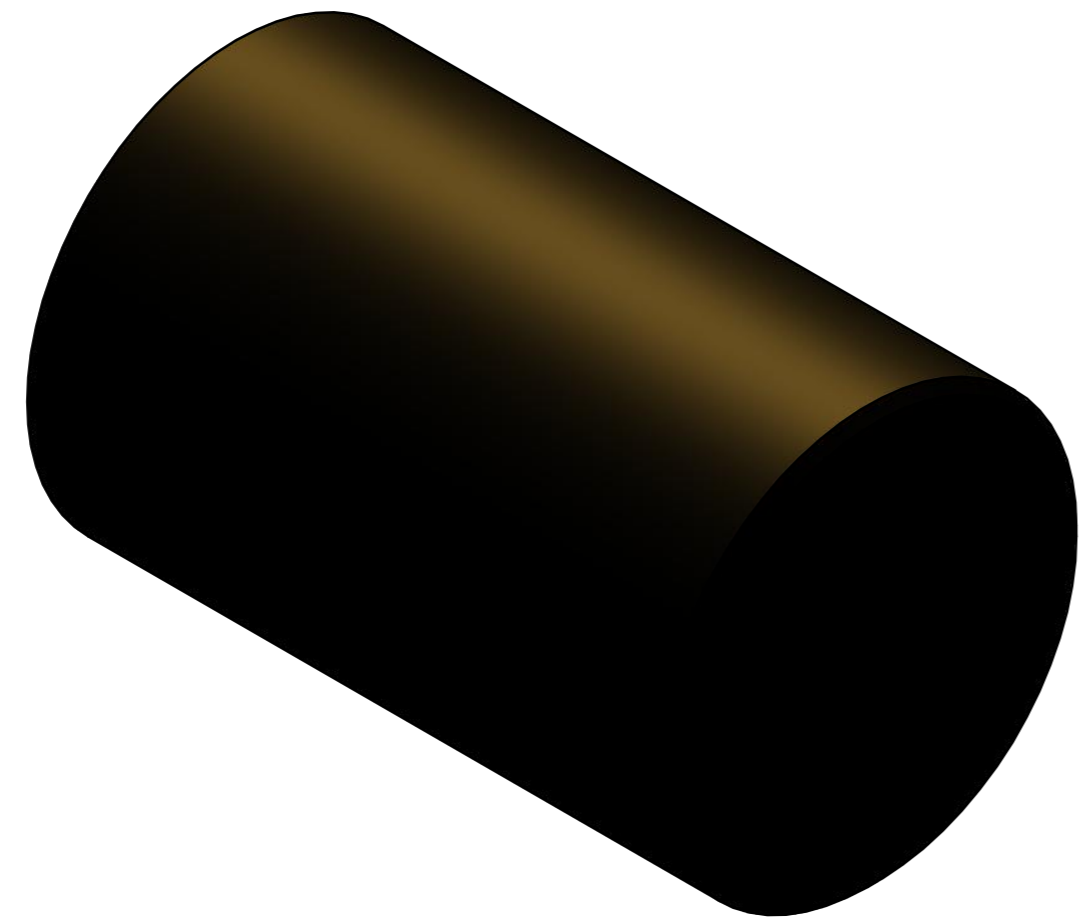


DOC.NR.	REV	DATE	BY	DESCRIPTION
GM17004	-	27-9-2019	PV	ORIGINAL DRAWING



DIRECT MOUNTING OF THE BAR MAGNET IN IRON REDUCED THE HOLDING POWER BY UP TO 15% DUE TO MAGNETIC SHORT CIRCUITING. TO AVOID THIS CERTAIN DISTANCES NEED TO BE MAINTAINED BETWEEN THE BRASS CASING OF THE BAR MAGNET AND THE IRON. THE DISTANCE ARE ALSO TO BE ADHERED TO IF THE BAR MAGNET WAS SHORTENED BY DIMENSION A. PLEASE REFER TO THE DISTANCE GIVEN IN THE DRAWING (distance mm).

A-A

RAW MAT.	1	Quantity	Material Number	Material Description	Length (mm)	Width (mm)
Sheet:	A2	Extra info:	POTMAGNET SAMARIUM-COBALT			
Drawn:	PV	Weight (kg):	0,021	General tolerance:	ISO 2768- mK	
Date:	6-9-2019	Drawn according:	ISO268; ISO1101; ISO2553			
Spare part:	False	Status:	Released			
Quick search:	POTGM	Customer reference number:				
Description:	PM-BA-S-BR-D13h6x20			Document number:	GM17004	Doc.Rev:
		Part number:	GM17004		Rev:	