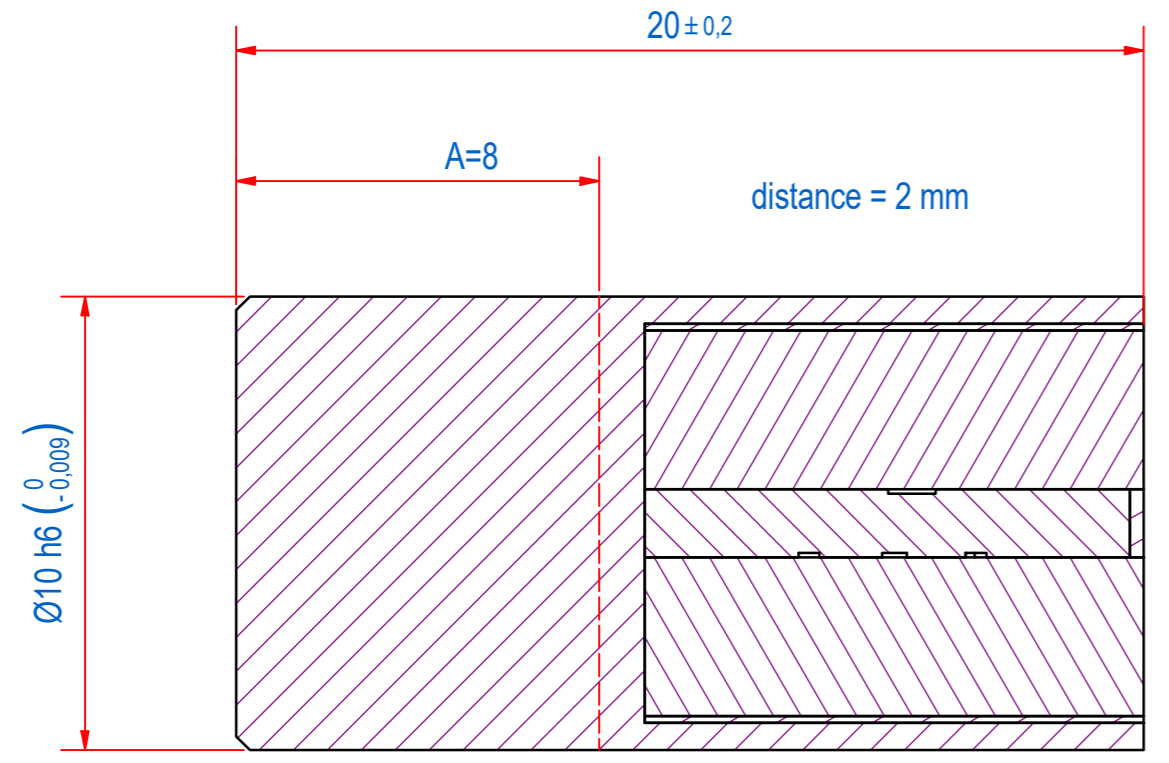
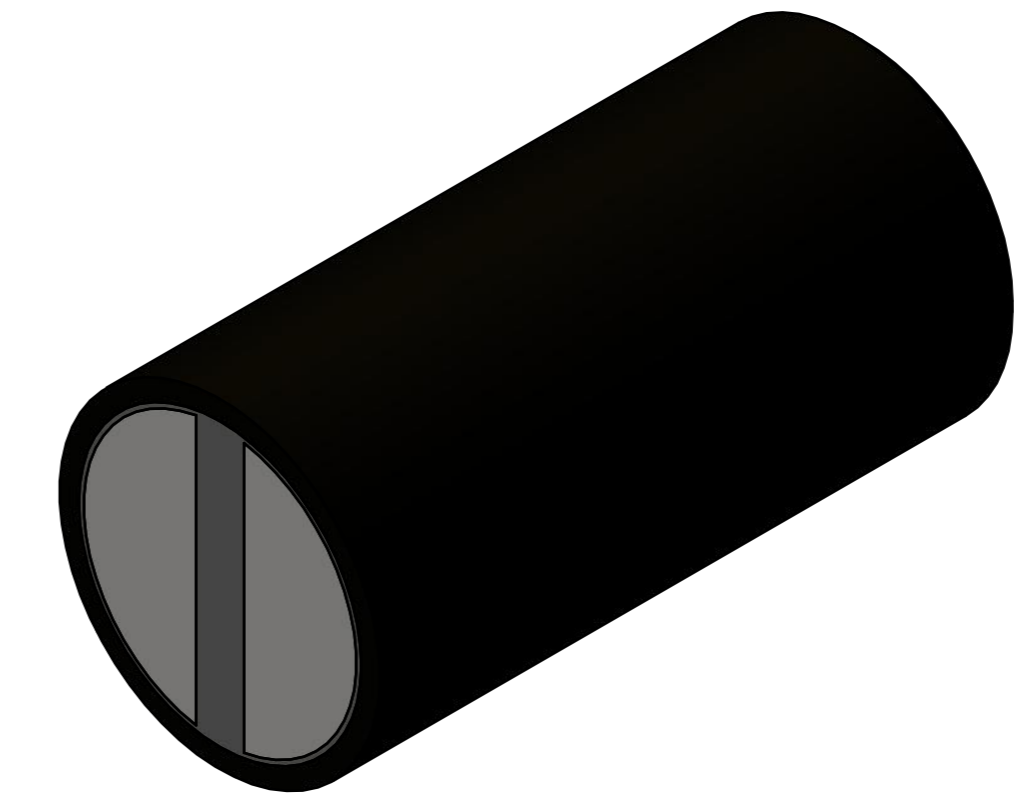
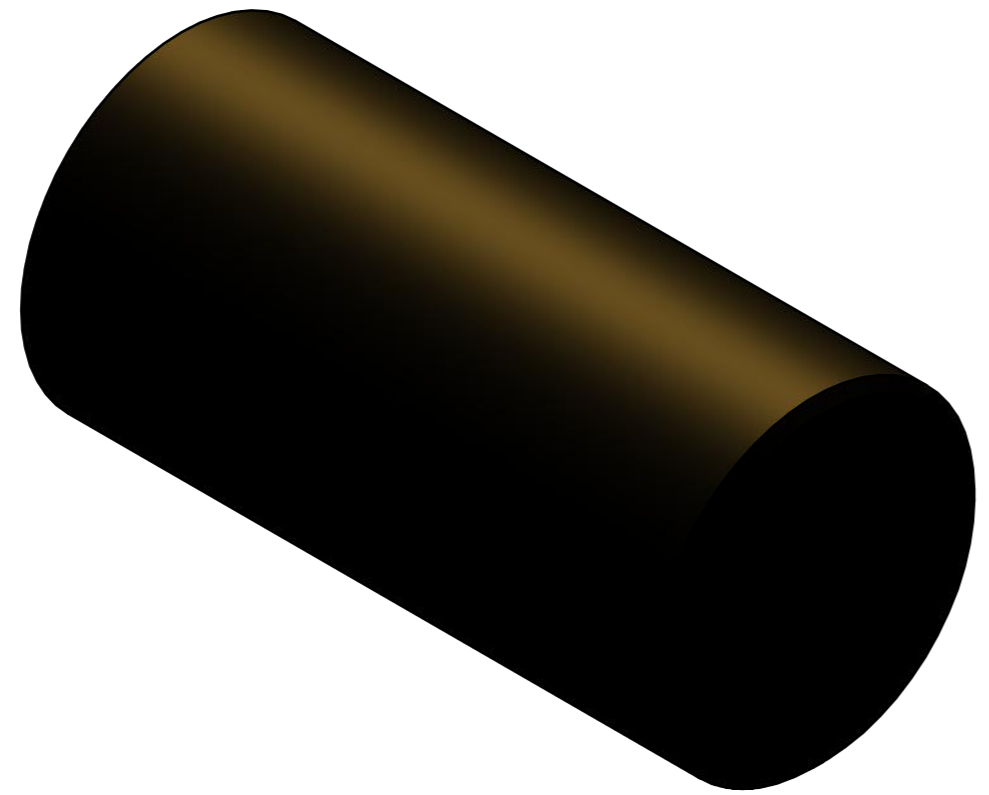
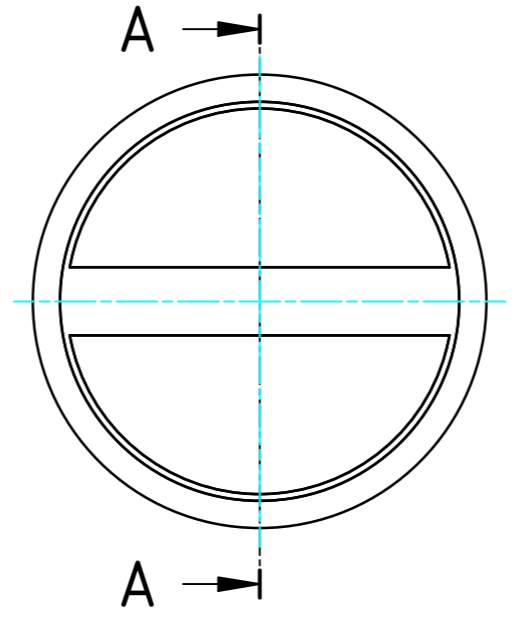


DOC.NR.	REV	DATE	BY	DESCRIPTION
GM17003	-	27-9-2019	PV	ORIGINAL DRAWING



A-A



DIRECT MOUNTING OF THE BAR MAGNET IN IRON REDUCED THE HOLDING POWER BY UP TO 15% DUE TO MAGNETIC SHORT CIRCUITING. TO AVOID THIS CERTAIN DISTANCES NEED TO BE MAINTAINED BETWEEN THE BRASS CASING OF THE BAR MAGNET AND THE IRON. THE DISTANCE ARE ALSO TO BE ADHERED TO IF THE BAR MAGNET WAS SHORTENED BY DIMENSION A. PLEASE REFER TO THE DISTANCE GIVEN IN THE DRAWING (distance .... mm).

RAW MAT.	1	Quantity	Material Number	Material Description	Length (mm)	Width (mm)
Sheet:	A2	Extra info:	POTMAGNET SAMARIUM-COBALT			
Drawn:	PV	Weight (kg):	0,012			
Date:	6-9-2019	General tolerance:		ISO 2768- mK		
Spare part:	False	Drawn according:		ISO268; ISO1101; ISO2553		
Quick search:	POTGM	Status:		Released		
Description:	PM-BA-S-BR-D10h6x20			Customer reference number:		
© All rights reserved. Reproduction is not permitted without written permission of GOUDSMIT Magnetic Systems BV				Document number:	GM17003	Doc.Rev:
				Part number:	GM17003	Rev: