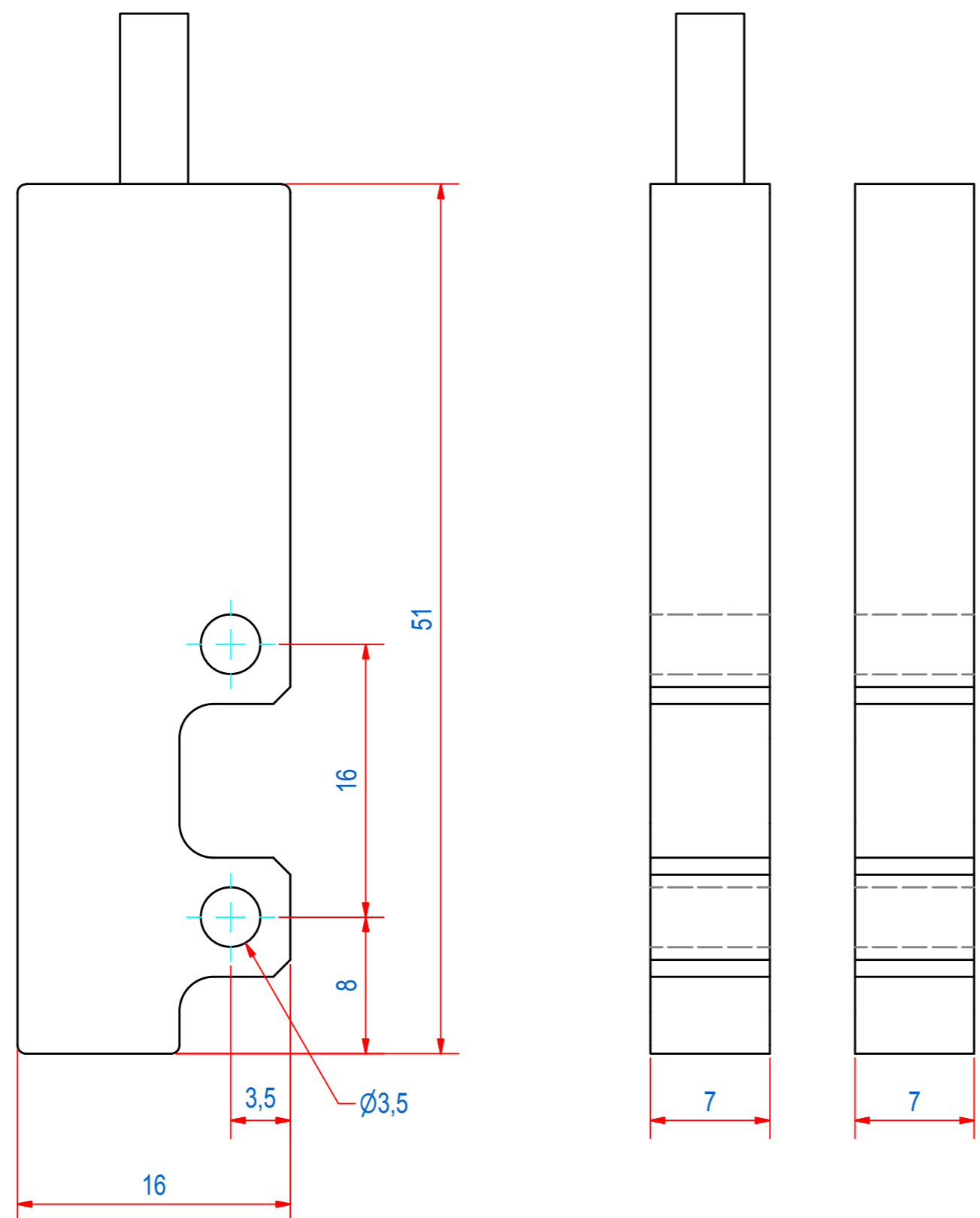
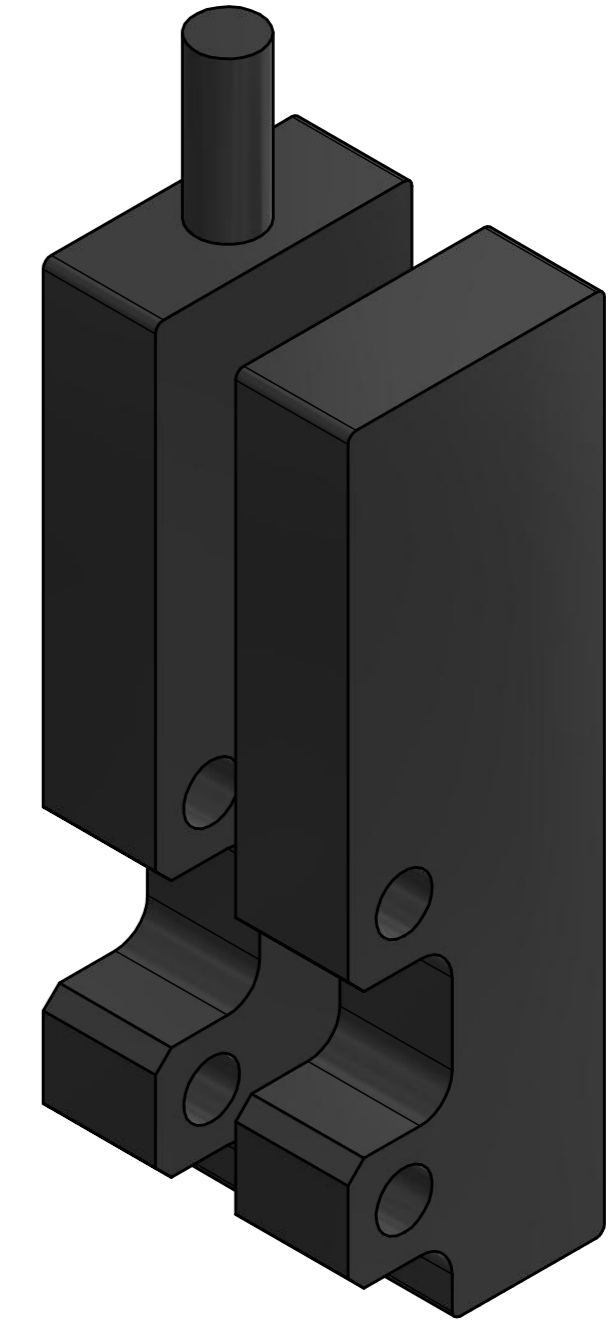


REV	DATE	BY	DESCRIPTION
-	21-1-2019	CR	REFERENCE DRAWING EITA042001



RAW MAT.	QTY	MAT. NUMBER	MAT. DESCRIPTION	LENGTH (mm)	WIDTH (mm)
1					
Sheet: A2		Extra info: PREVENTA ATEX D		General tolerance: ISO 2768 - mK	
Drawn: CR		Weight (kg): 0,1		Drawn according: ISO268; ISO1101; ISO2553	
Date: 21-1-2019				Status: Released	
Spare part: False				Customer reference number:	
Quick search: PROXIMITY		<small>© All rights reserved. Reproduction is not permitted without written permission of GOUDSMIT Magnetic Systems BV</small>		File number: EITA042006 Rev: -	
Description: CODED MAGN SWITCH XCS Ex 10M TM				Part number: EITA042006 Rev: -	