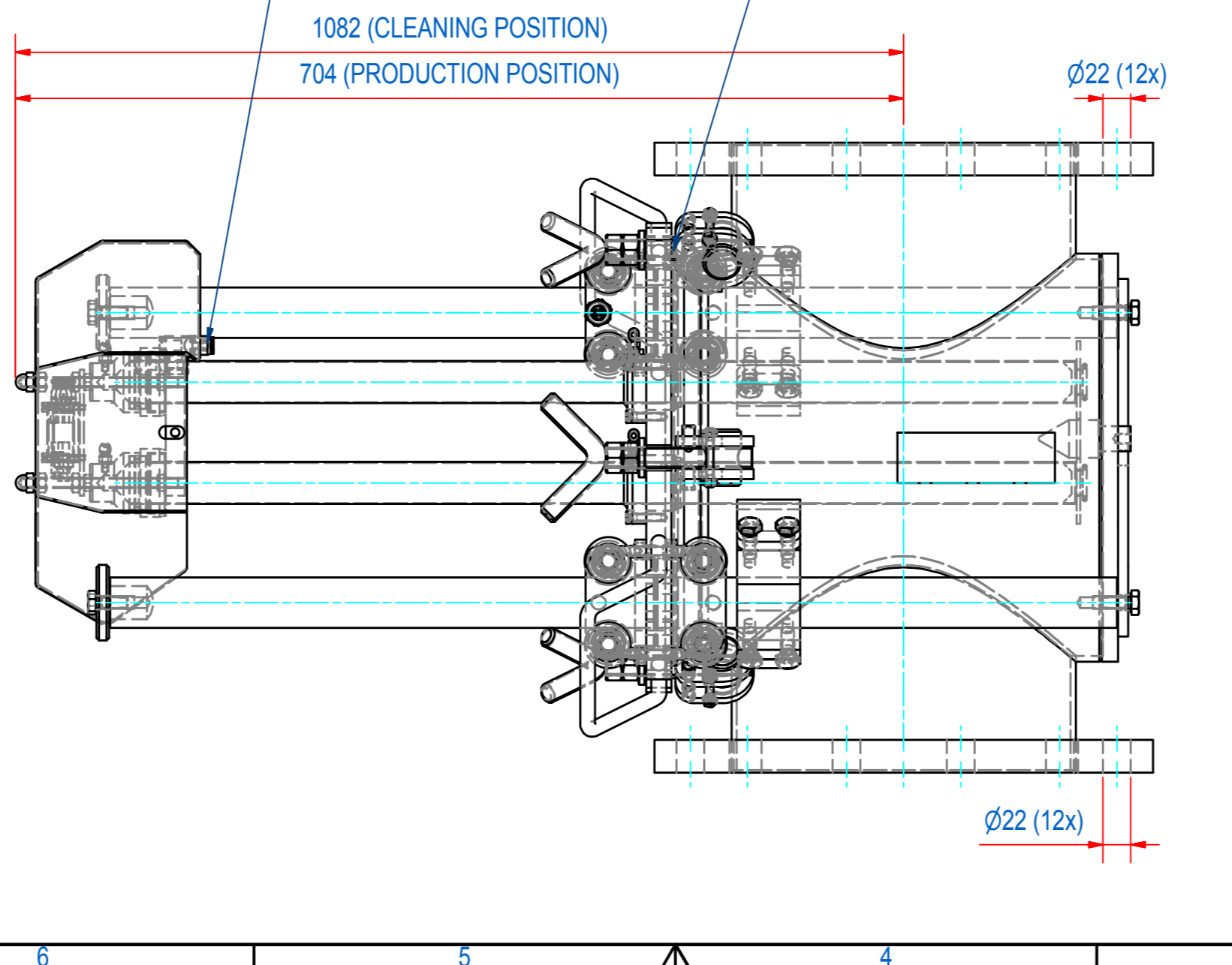
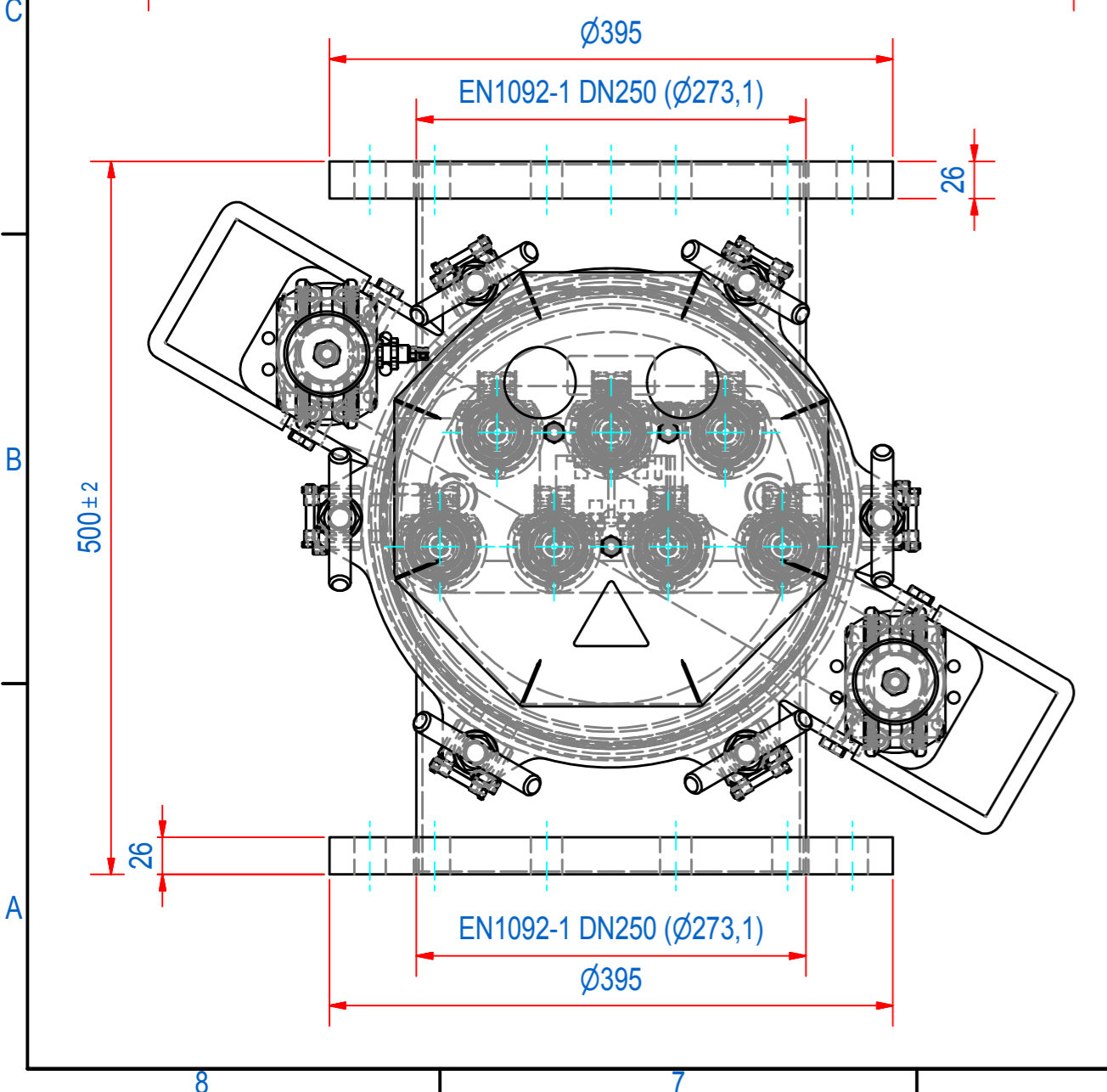
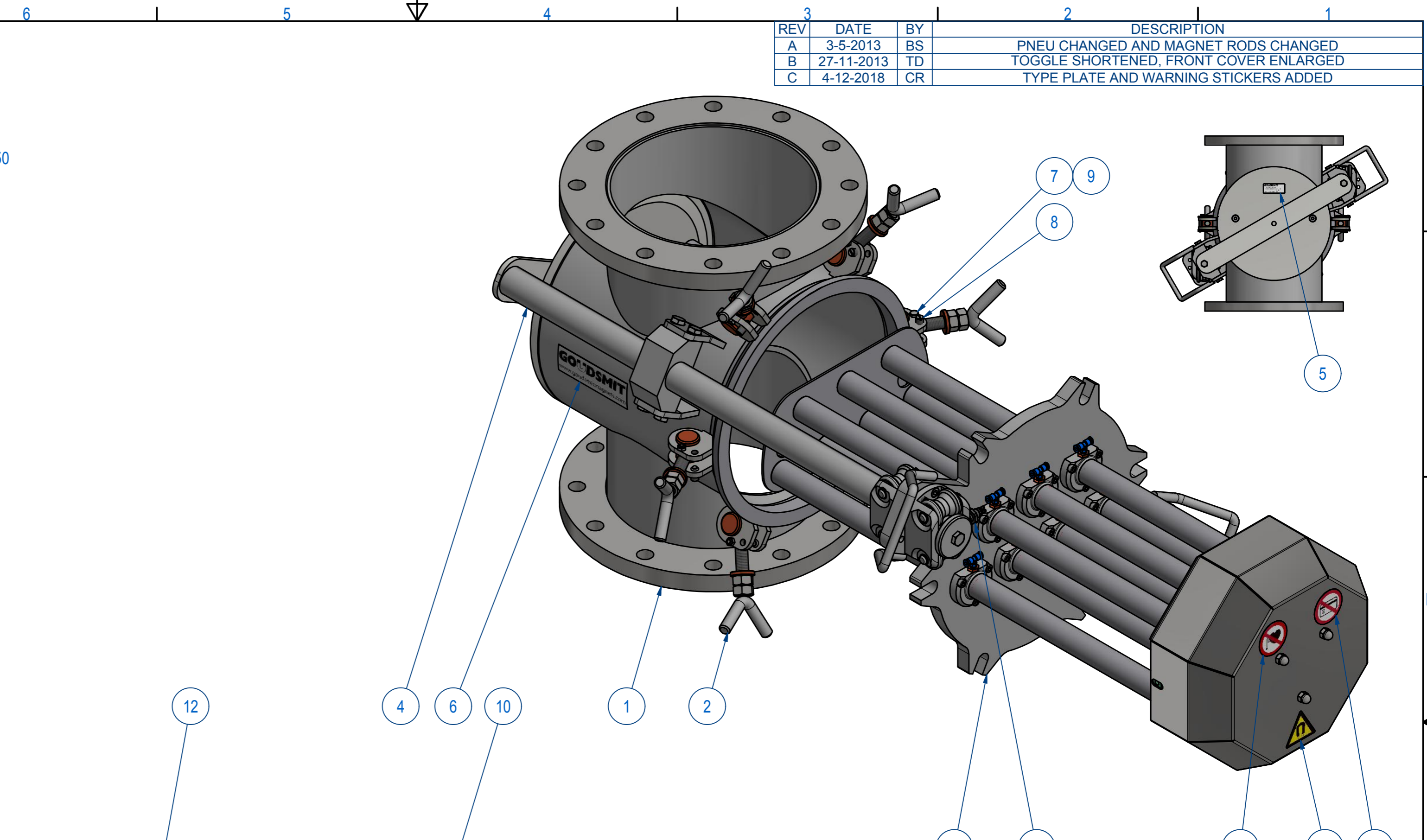
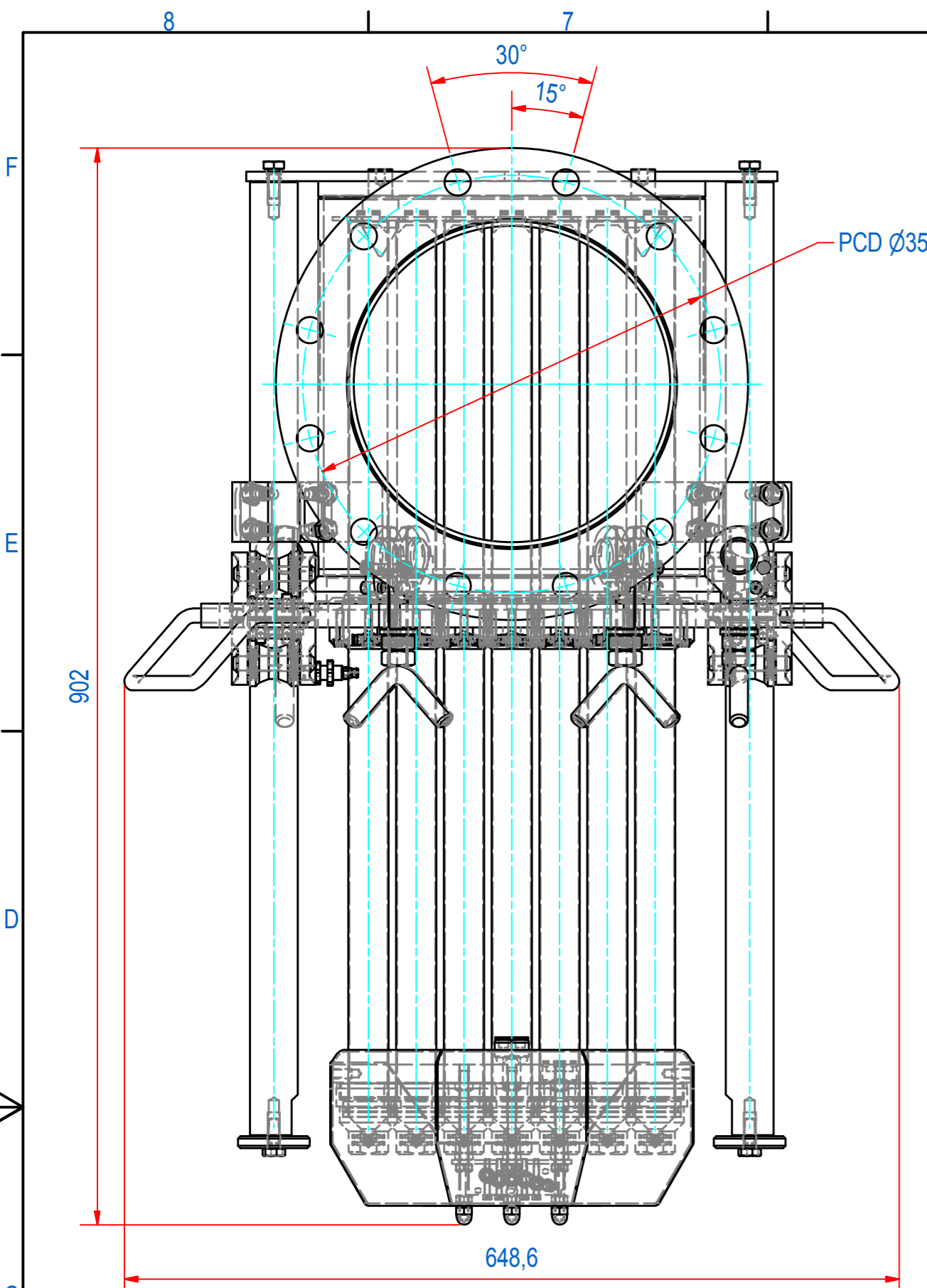


REV	DATE	BY	DESCRIPTION
A	3-5-2013	BS	PNEU CHANGED AND MAGNET RODS CHANGED
B	27-11-2013	TD	TOGGLE SHORTENED, FRONT COVER ENLARGED
C	4-12-2018	CR	TYPE PLATE AND WARNING STICKERS ADDED



ITEM	QTY	PART NUMBER	DESCRIPTION	Dimensions
15	1	1000.20056	STICK. PACEMAKER FORB. D=50	
14	1	1000.20055	STICKER MAGN. CARD FORB. D=50	
13	1	1000.20030	STICKER MAGNETIC FIELD small	
12	1	83.2570005	PUSH-IN Y-CONNECTOR QSY-8	
11	1	83.1500044	VALVE (SENSOR) 3/2 SVK-3-PK-3	
10	1	78.1316700	O-RING Ø316.87xØ7 EC1935	
9	6	60.0200006	NUT, HEX M6 - A2	M6
8	6	59.0000008	SLOT. SPRING PLUNGER M10X19 SS	
7	6	50.1206040	BOLT, HEX M6x40 - A2	M6x40
6	2	E0091366	NAME PLATE FILTER DN250	
5	1	E0086453	TYPE PLATE FILTER SFN	
4	2	A120485	FS250 ALIGNMENT ROD D40	
3	1	A120661	FS250 TOP PNEU D34 ASSY WHEELS	
2	6	A120504	FS000 TOGGLE SET M16	
1	1	A120480	FILTER HOUSE EN1092-1 DN250	

RAW MAT.	QTY	MAT. NUMBER	MAT. DESCRIPTION	LENGTH (mm)	WIDTH (mm)
1	1				

Sheet: A2	Extra info:	General tolerance: ISO 2768 - mK
Drawn: TD	Weight (kg): 132,7	Drawn according: ISO268; ISO1101; ISO2553
Date: 5-4-2013		Status: Standard
Spare part: False		Customer reference number:
Quick search: FP250	GOUDSMIT MAGNETIC SYSTEMS	File number: SSFP25038 Rev: C
Description: SFN-250-IF-07Q-HT-F1m-S-B-B	© All rights reserved. Reproduction is not permitted without written permission of GOUDSMIT Magnetic Systems BV	Part number: SSFP25038 Rev: C