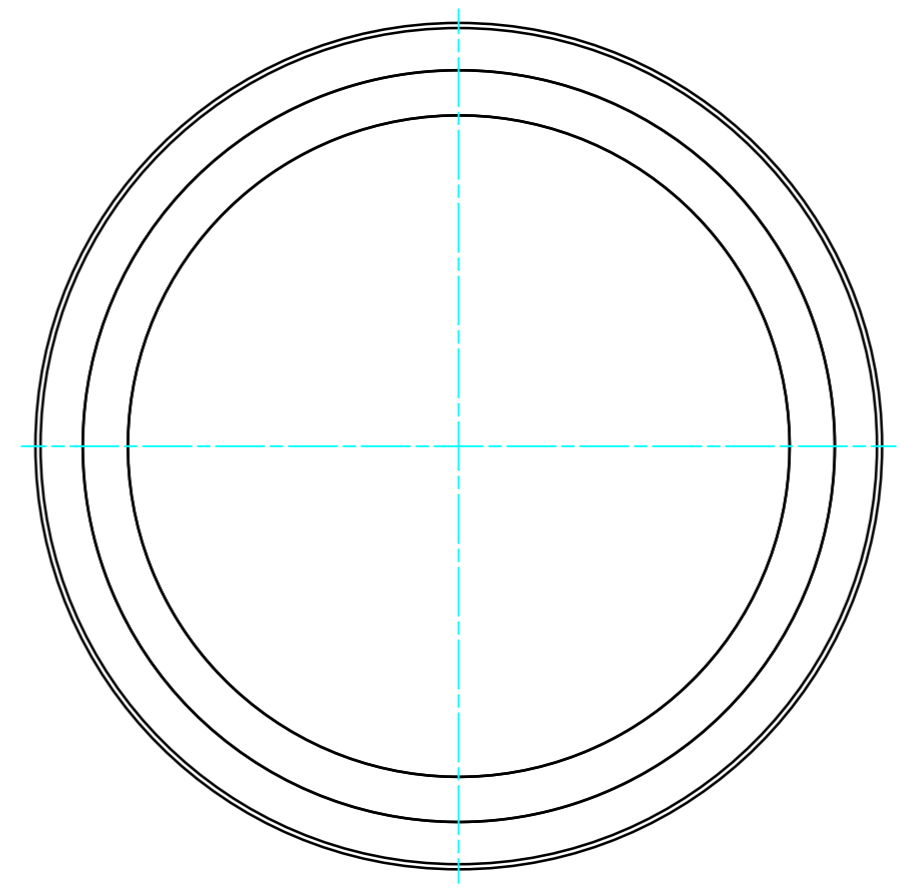
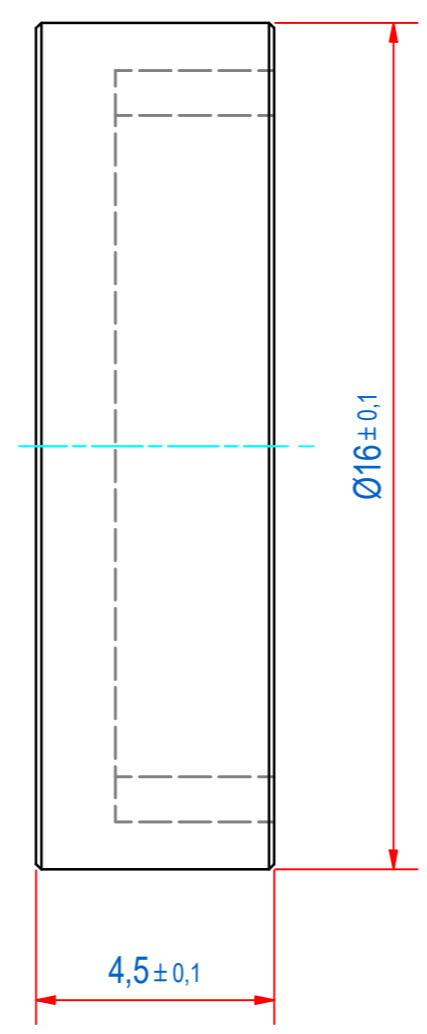
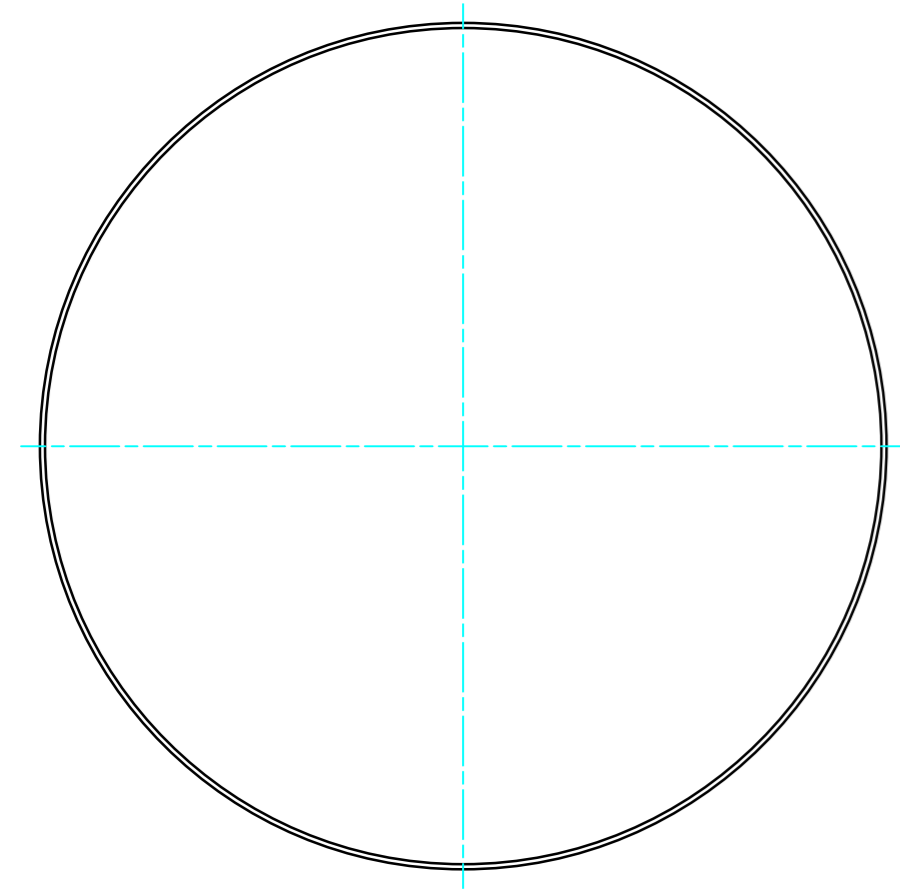
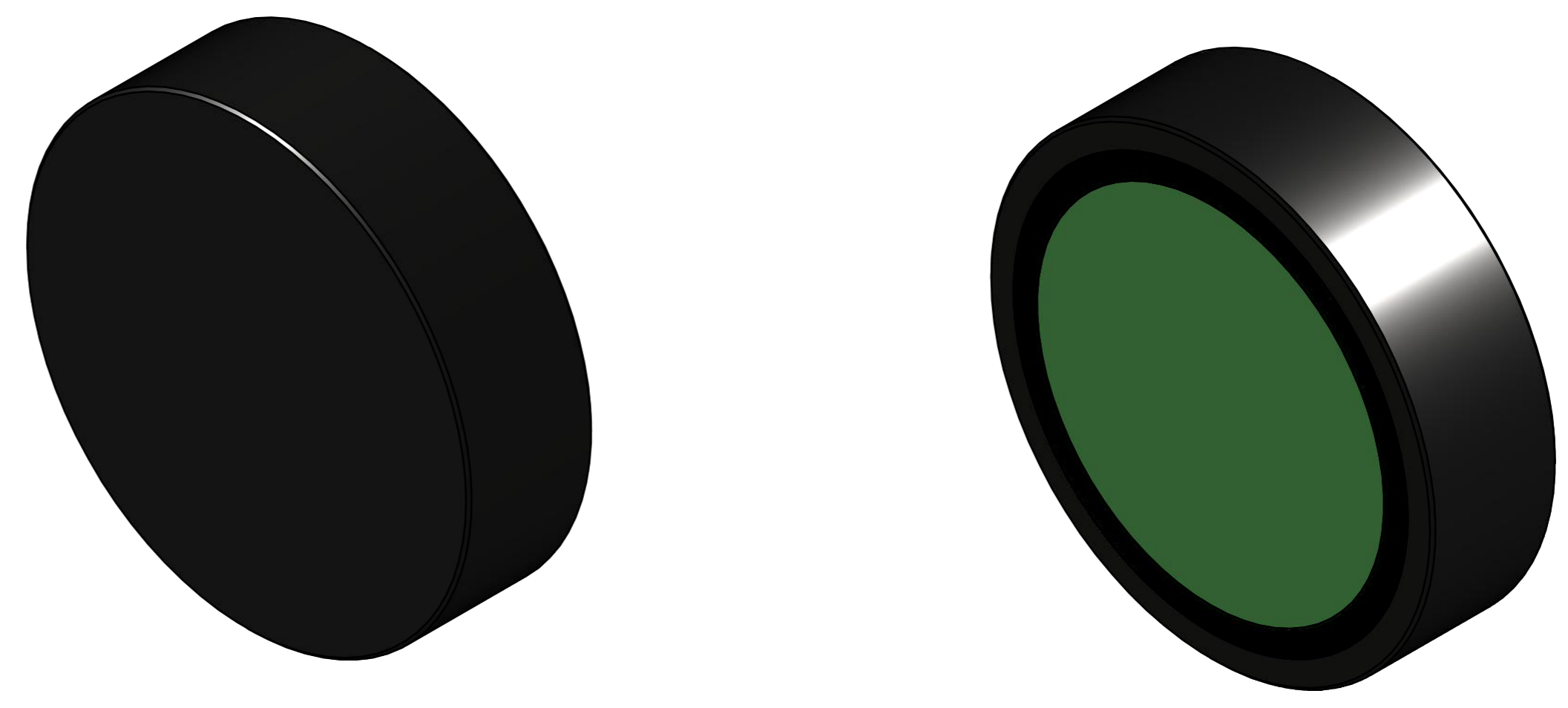


DOC.NR.	REV	DATE	BY	DESCRIPTION
E0119254	-	30-9-2019	PV	ORIGINAL DRAWING



SURFACE TREATMENT: ZINC PLATED

RAW MAT.	1	Quantity	Material Number	Material Description	Length (mm)	Width (mm)
Symbol	Sheet: A2	Extra info:	POTMAGNET SAMARIUM-COBALT		General tolerance: ISO 2768- mK	
Drawn: PV	Weight (kg): 0,006	Date:	19-7-2019		Drawn according: ISO268; ISO1101; ISO2553	
Spare part: False	Source:			Status: Released		
Quick search: POTGM	Description:		PM-BA-S-SG-D16x4.5		Customer reference number:	Doc.Rev:
				Document number: E0119254	Part number: GM17105	
				© All rights reserved. Reproduction is not permitted without written permission of GOUDSMIT Magnetic Systems BV		Rev: -