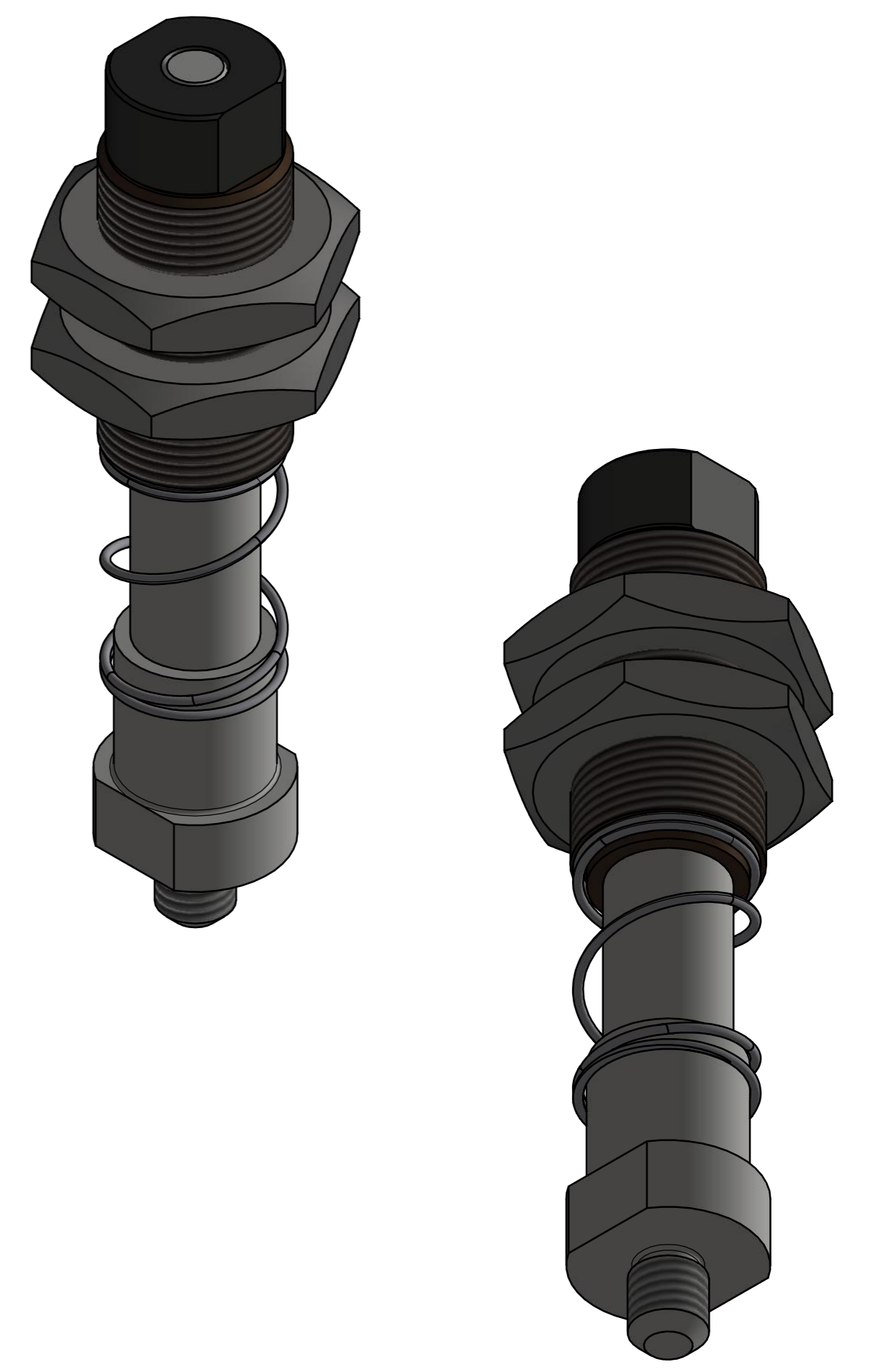
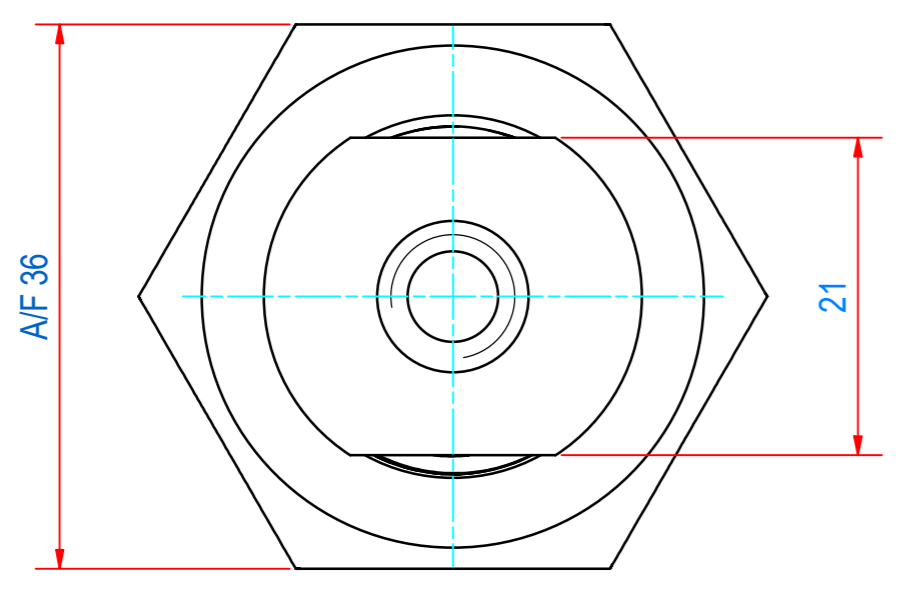
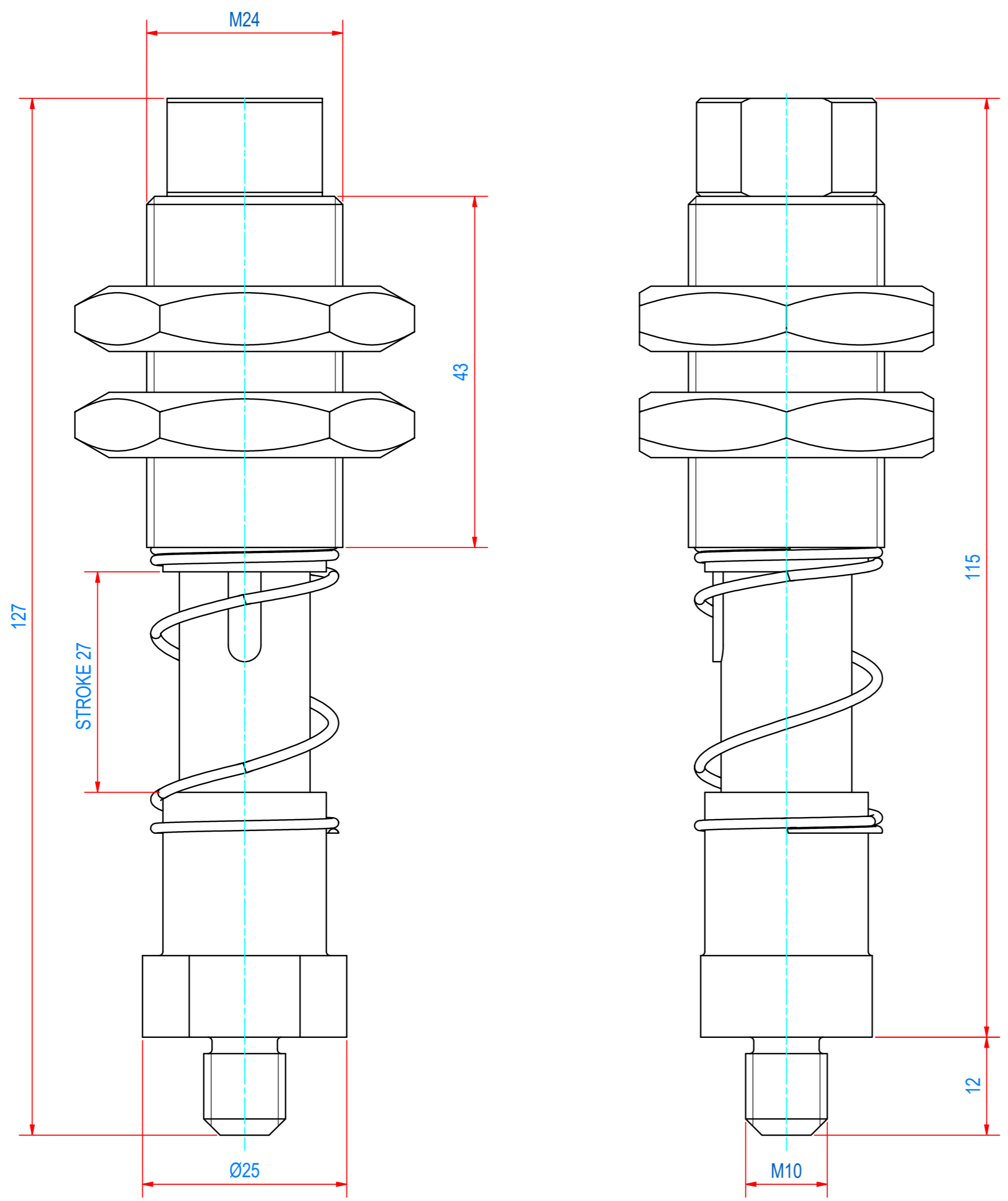


REV	DATE	BY	DESCRIPTION
A	29-4-2013	PB	E0004176 WAS A190184
B	4-7-2014	PB	M24 PART MATERIAL WAS BRASS
C	4-6-2020	JVe	PARTS CHANGED IN E0004176



1	1	E0004176	ASSEMBLY DRAWING SPINDLE	Dimensions	
ITEM	QTY	PART NUMBER	DESCRIPTION	Length (mm)	Width (mm)
RAW MAT.	1				
	Quantity	Material Number	Material Description	Length (mm)	Width (mm)
	Sheet: A2	Extra info:	General tolerance: ISO 2768 - mK		
Drawn: PB	Weight (kg): 0,44		Drawn according: ISO268; ISO1101; ISO2553		
Date: 31-1-2012			Status: Standard		
Spare part: False	Source:		Customer reference number:		
Quick search: TPGC99 M10			Document number: TPGC990025	Doc.Rev: C	
Description: HGA-PL-S-M10-M24-NR-RI			Part number: TPGC990025	Rev: C	



© All rights reserved. Reproduction is not permitted without written permission of GOUDSMIT Magnetic Systems BV