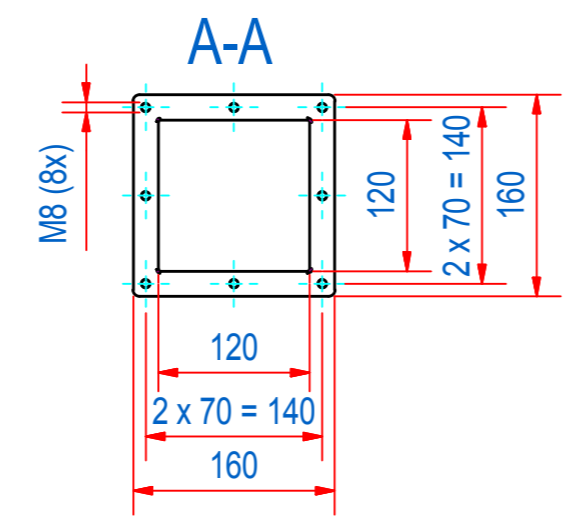
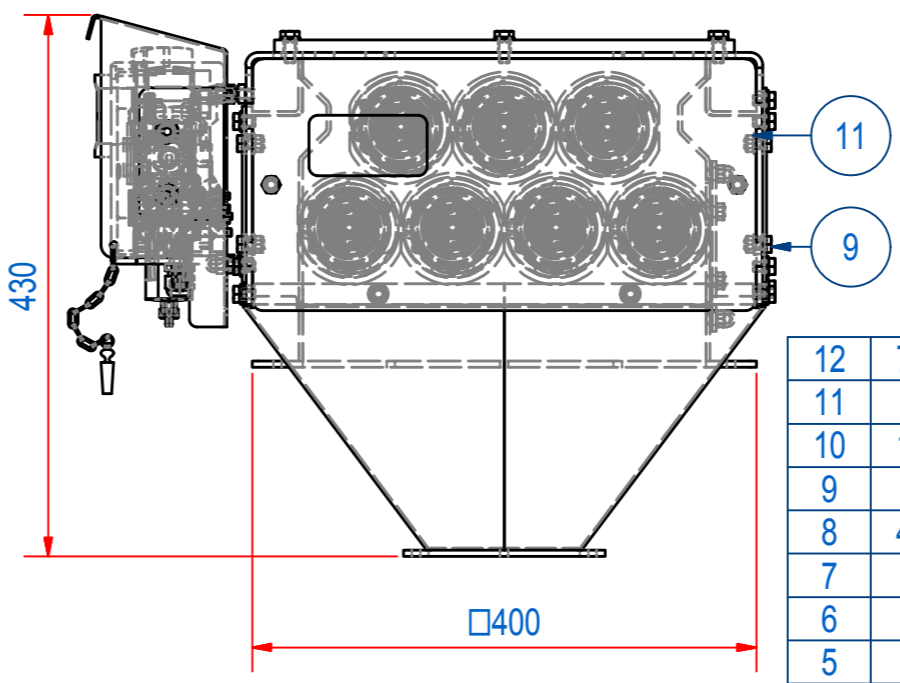
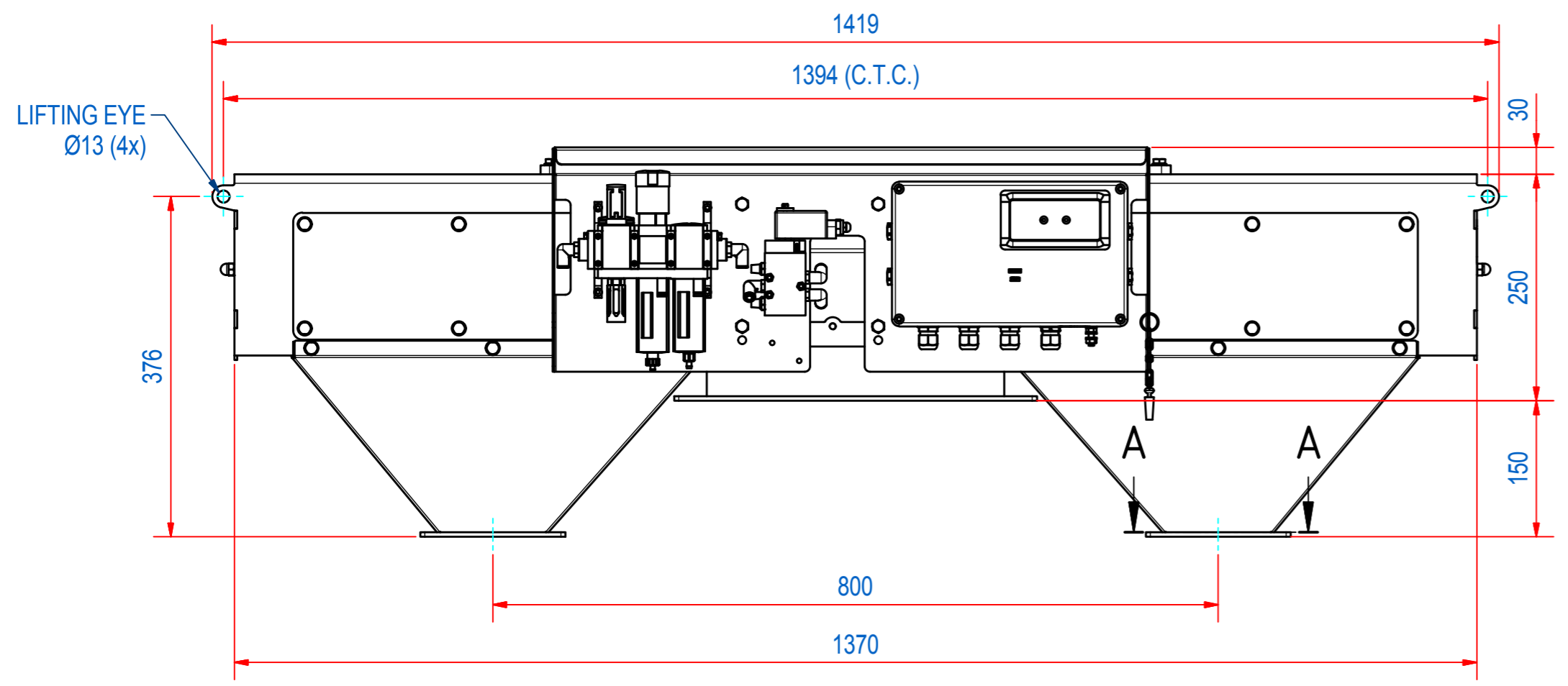
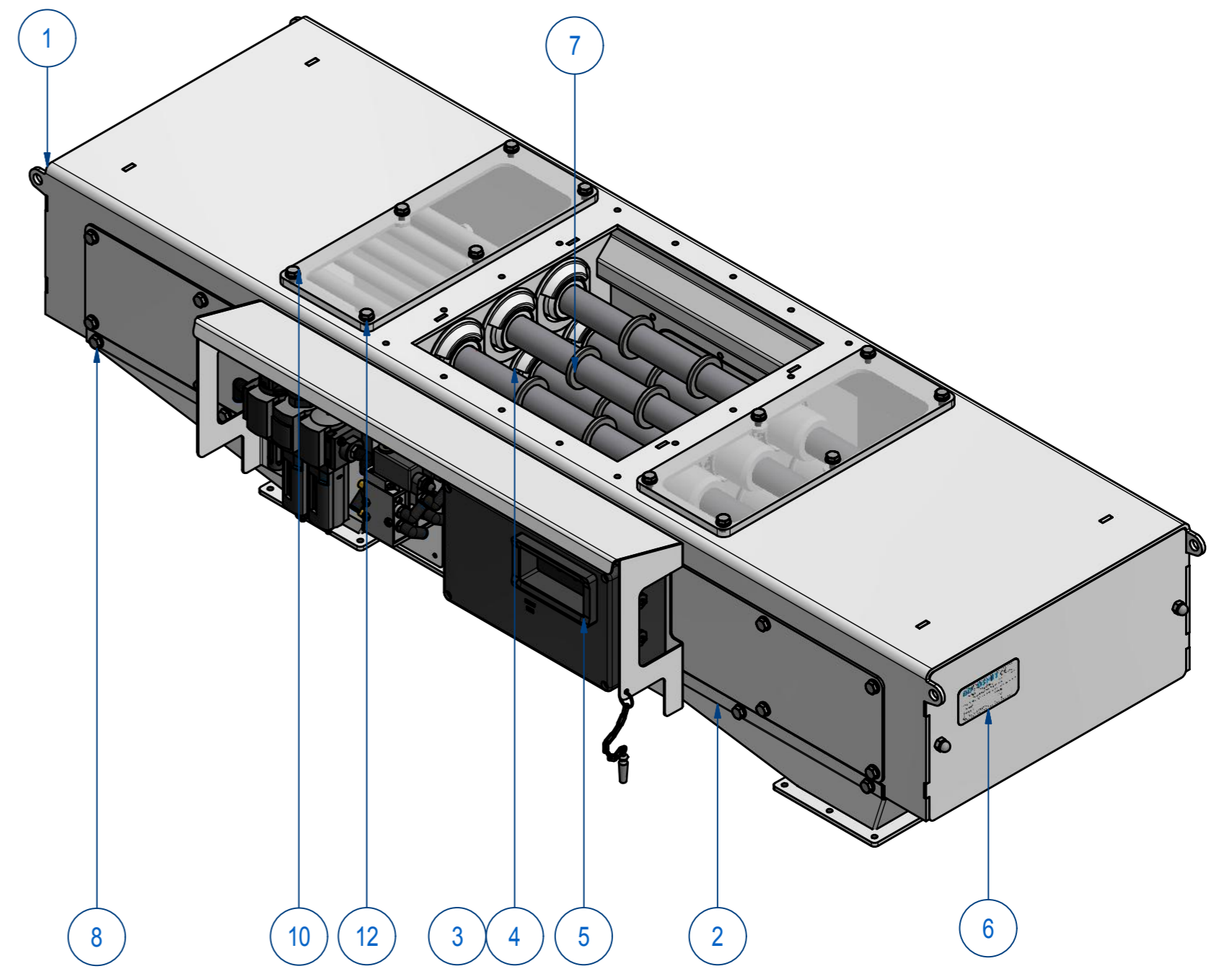
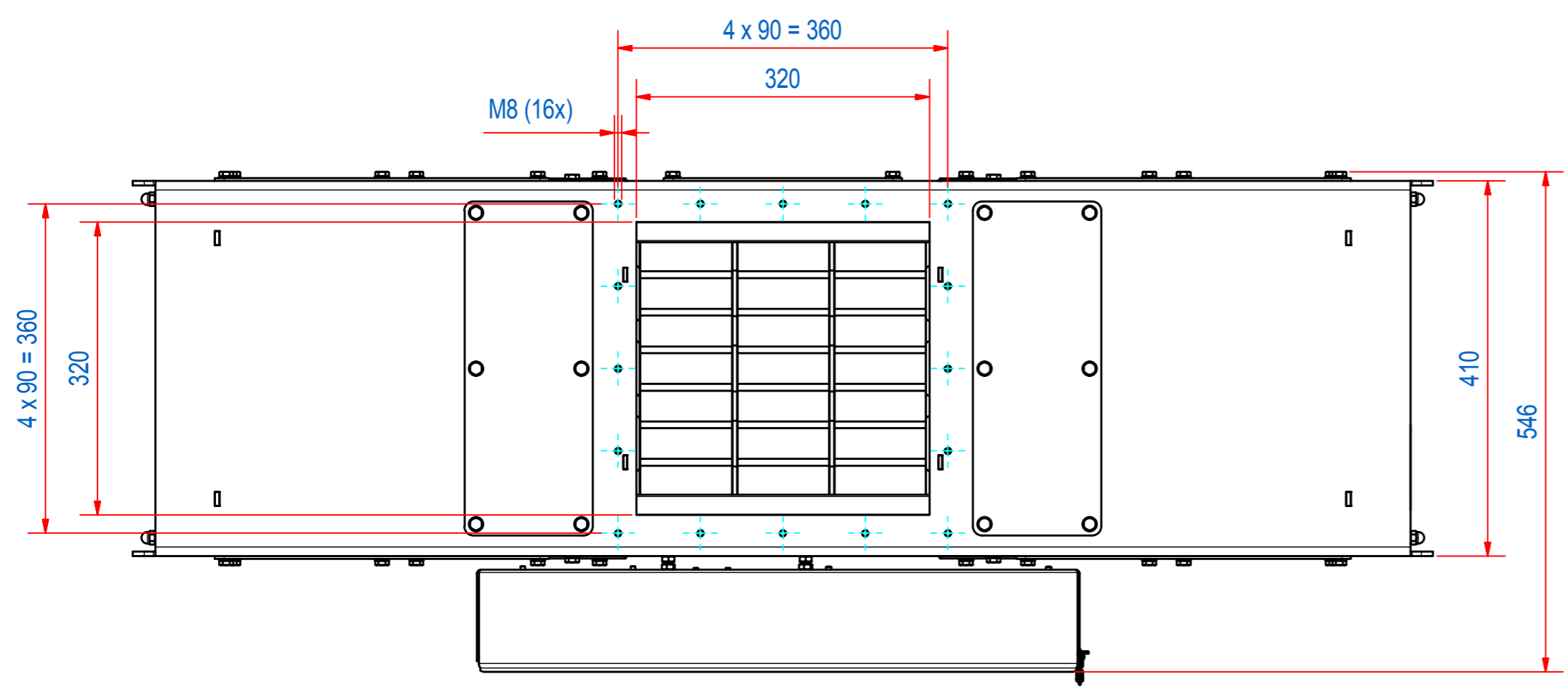


REV	DATE	BY	DESCRIPTION
-	10-1-2017	AvD	REFERENCE DRAWING SECC320101



ITEM	QTY	PART NUMBER	DESCRIPTION	Dimensions
12	72	70.0200008	WASHER M 8- A2	M 8
11	8	60.0200008	NUT, HEX M8 - A2	M8
10	12	50.1208020	BOLT, HEX M8x20 - A2	M8x20
9	8	50.1208016	BOLT, HEX M8x16 - A2	M8x16
8	44	50.1208012	BOLT, HEX M8x12 - A2	M8x12
7	7	SECC320916	CC320 MAGNET ROD D34 NdFeB	
6	1	E0006894	STICK. SECC ATEX II 1/2 D T130	
5	1	A140022	SECC CONTROL UNIT EX II 2D	
4	14	A120689	CC000 SLIDE RING EC1935	
3	14	A120673	RETAINING RING D65 CC000	
2	2	A240505	CHUTE CC3232	
1	1	A240503	CLEANFLOW CC3232	

RAW MAT.	1				
QTY		MAT. NUMBER	MAT. DESCRIPTION	LENGTH (mm)	WIDTH (mm)
Sheet: <b>A2</b> Drawn: <b>AvD</b> Date: <b>10-1-2017</b> Spare part: <b>False</b> Quick search: <b>CC3232</b> Description: <b>SECC-3232-07S-N-Ex-F1E-L-B-B</b>		Extra info: <i>Cleanflow magnet static Auto cleaning - Continuous</i> Weight (kg): <b>145,5</b> <b>GOUDSMIT</b> MAGNETIC SYSTEMS <small>© All rights reserved. Reproduction is not permitted without written permission of GOUDSMIT Magnetic Systems BV</small>		General tolerance: <b>ISO 2768 - mK</b> Drawn according: <b>ISO268; ISO1101; ISO2553</b> Status: <b>Standard</b> Customer reference number: File number: <b>SECC320201</b> Part number: <b>SECC320201</b>	