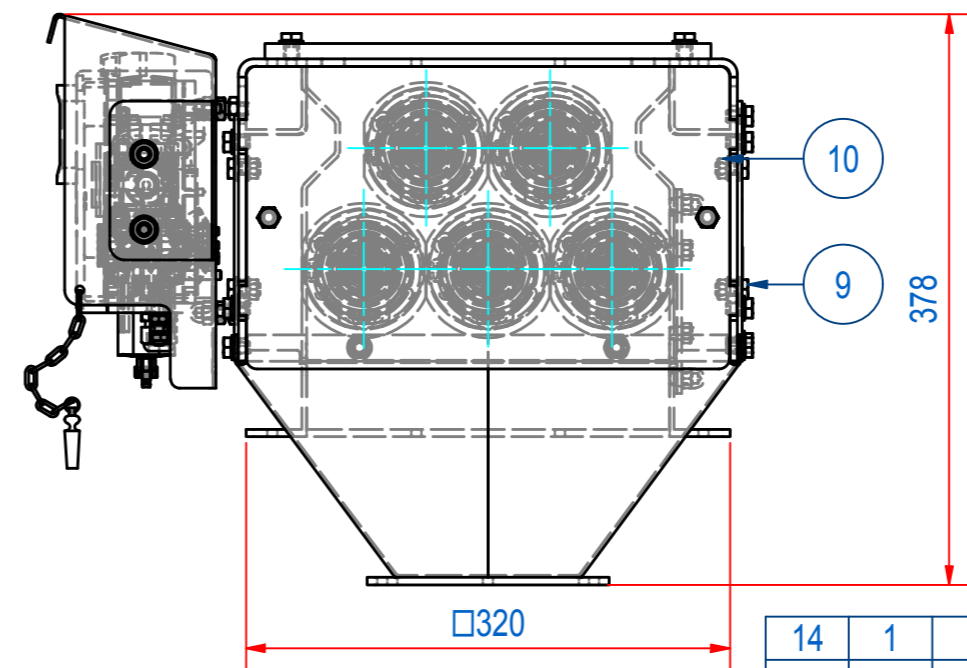
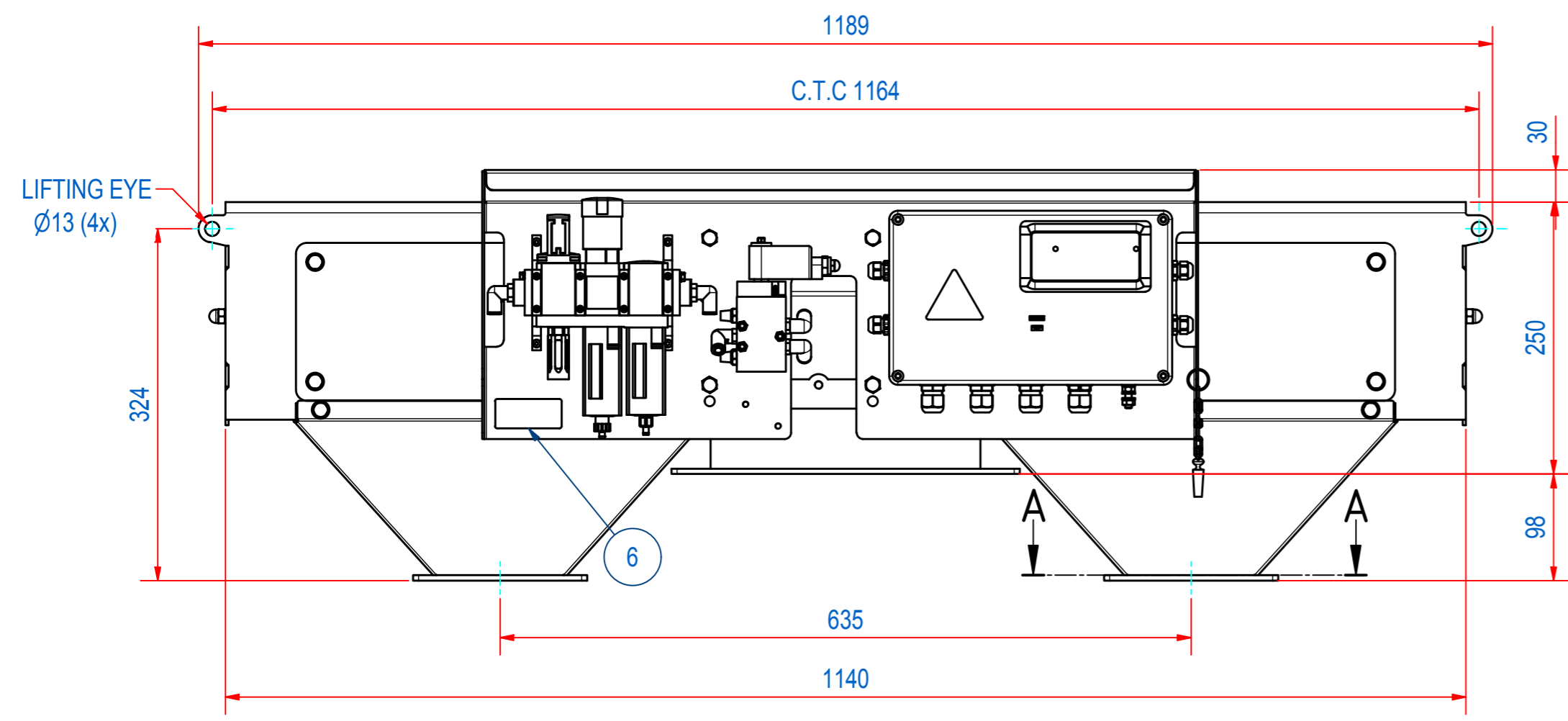
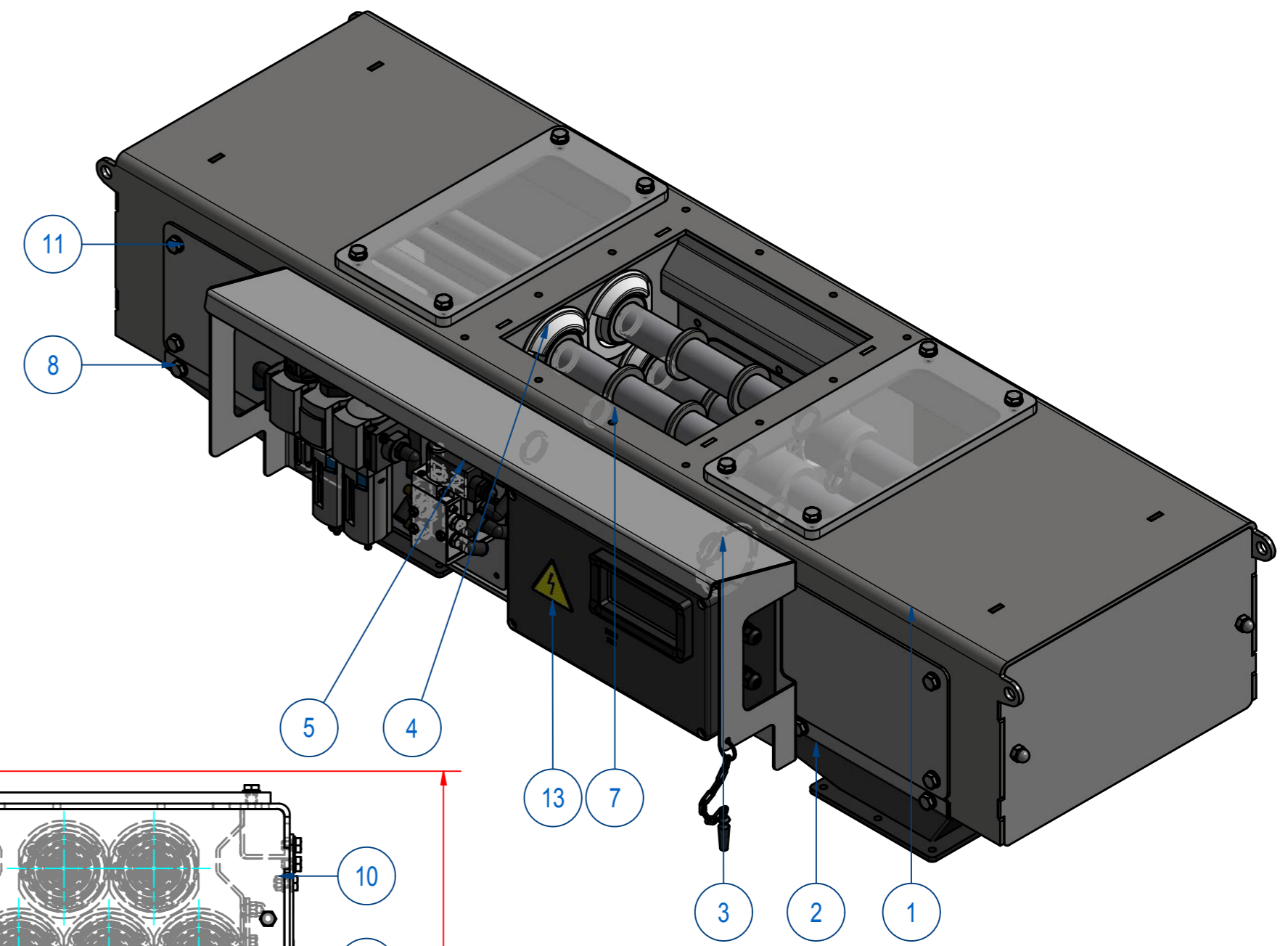
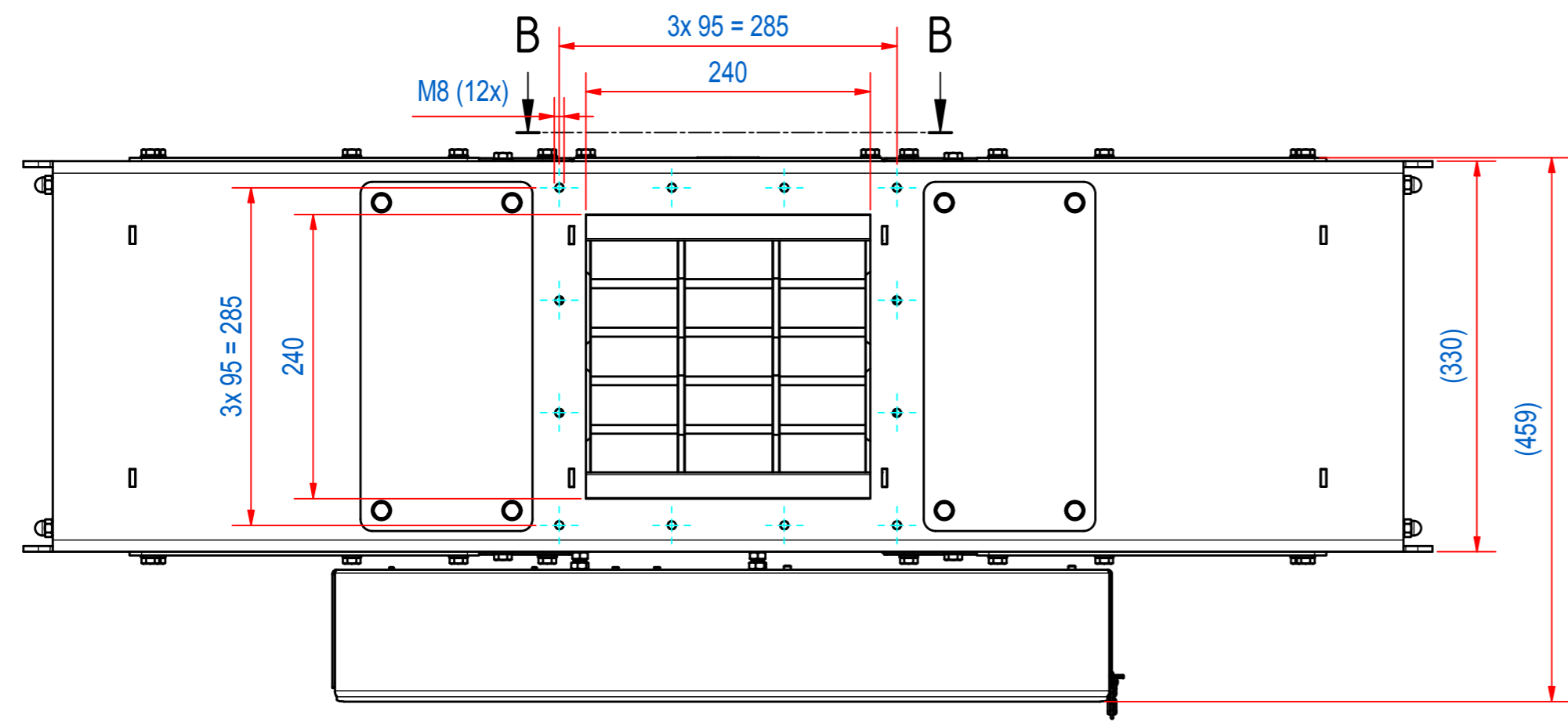
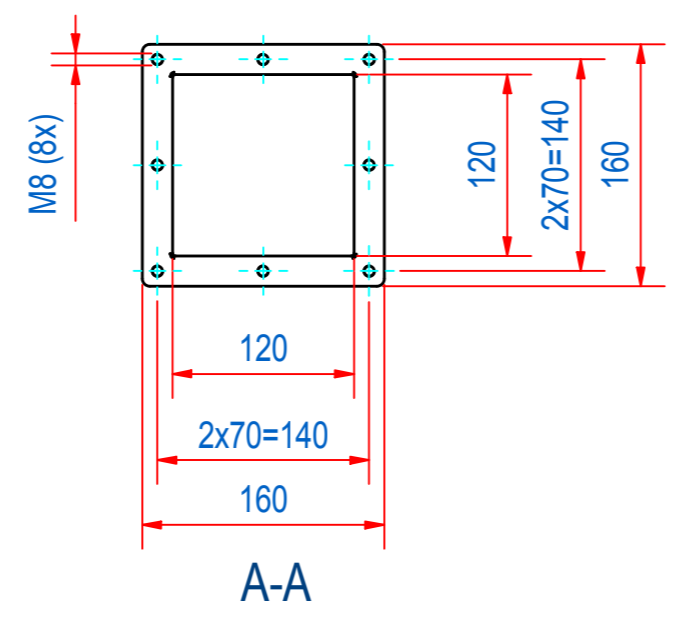
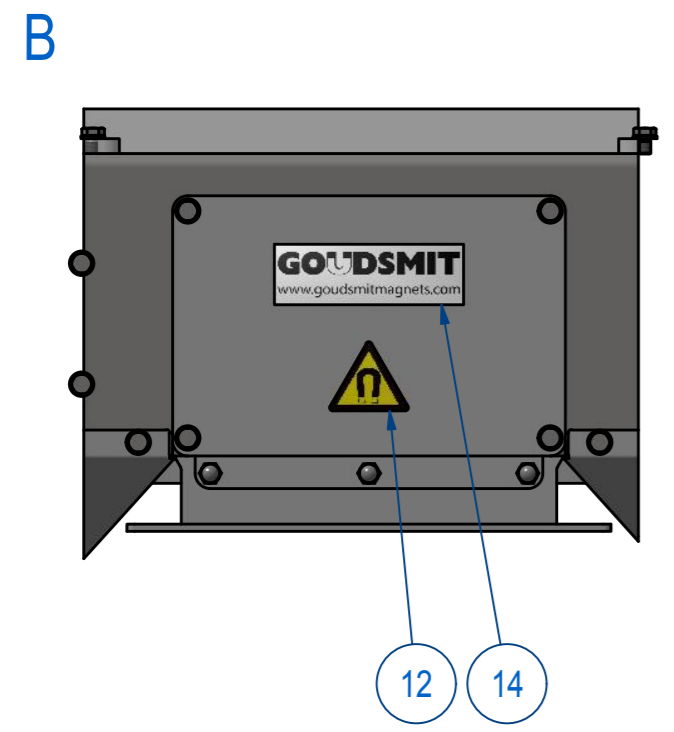


REV	DATE	BY	DESCRIPTION
-	22-7-2013	AvD	REFERENCE DRAWING SECC240101
A	10-1-2017	AvD	ITEM 5 (CONTROL UNIT A140022) CHANGED
B	27-2-2019	CR	WARNING STICKERS ADDED



THIS DRAWING CORRESPONDS WITH ATEX SCHEDULE DRAWING **M53674**

ITEM	QTY	PART NUMBER	DESCRIPTION	Dimensions
14	1	1215.00407	NAME PLATE GOUDSMIT 125x40	
13	1	1000.20058	STICKER DANGER ELECTRIC SHOCK	
12	1	1000.20030	STICKER MAGNETIC FIELD small	
11	60	70.0200008	WASHER M 8- A2	M 8
10	8	60.0200008	NUT, HEX M8 - A2	M8
9	8	50.1208016	BOLT, HEX M8x16 - A2	M8x16
8	44	50.1208012	BOLT, HEX M8x12 - A2	M8x12
7	5	SECC240916	CC240 MAGNET ROD D34 NdFeB	
6	1	E0006894	TYPE PLATE SECC ATEX 1/2D T130	
5	1	A140022	SECC CONTROL UNIT EX II 2D	
4	10	A120689	CC000 SLIDE RING EC1935	
3	10	A120673	RETAINING RING D65 CC000	
2	2	A240496	CHUTE CC2424	
1	1	A240494	CLEANFLOW CC2424	



RAW MAT.	Quantity	Material Number	Material Description	Length (mm)	Width (mm)
1	1				

Sheet: <b>A2</b>	Extra info:	General tolerance: <b>ISO 2768 - mK</b>
Drawn: <b>AvD</b>	Weight (kg): <b>108,3</b>	Drawn according: <b>ISO268; ISO1101; ISO2553</b>
Date: <b>22-7-2013</b>		Status: <b>Standard</b>
Spare part: <b>False</b>	Source:	Customer reference number:
Quick search: <b>CC2424</b>		Document number: <b>E0111486</b>
Description: <b>SECC-2424-05S-N-Ex-F1E-L-B-B</b>		Doc.Rev: <b>B</b>
		Part number: <b>SECC240201</b>
		Rev: <b>B</b>