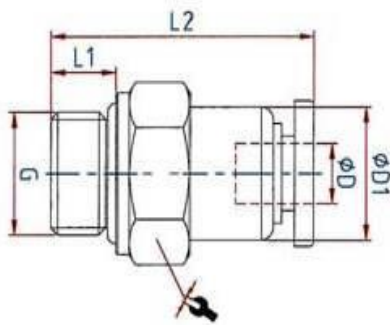
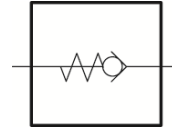


The non-return function of these push-in fittings prevents the air from flowing back; the unidirectional design means air flow is only possible in one direction.

These valves are available with air flow from the port to the tube or from the tube to the port.

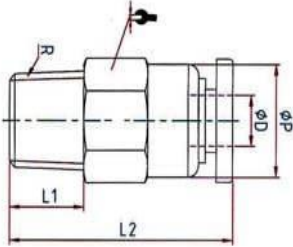
Applications	Air, vacuum
Material	Plastic and nickel-plated brass
Max. working pressure	10 bar
Min. opening pressure	0.2 bar
Temperature range	0 °C to 60 °C
Medium	Compressed air
Recommended hose	PU or PA (nylon)



200.54-2

### Straight non-return valve, flow direction from port to tube, parallel male thread with O-ring (NBR)

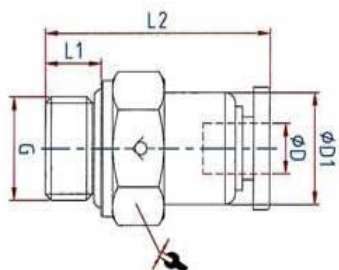
Art. No.	Type No.	Thread	for tube O.D. mm	L1 mm	L2 mm	a/f mm	Ø D1 mm	Sleeve	Standard thread
151490	200.54-2	M5	4	3.5	33.0	10	10	Plastic blue	DIN 13-1
151491	200.184-2	G 1/8	4	5.5	28.0	14	10	Plastic blue	DIN EN ISO 228-1
151492	200.186-2	G 1/8	6	5.5	30.0	14	12	Plastic blue	DIN EN ISO 228-1
151493	200.188-2	G 1/8	8	5.5	33.0	14	14	Plastic blue	DIN EN ISO 228-1
151494	200.146-2	G 1/4	6	6.5	30.0	17	12	Plastic blue	DIN EN ISO 228-1
151495	200.148-2	G 1/4	8	6.5	35.5	17	14	Plastic blue	DIN EN ISO 228-1
151496	200.3810-2	G 3/8	10	7.5	41.0	20	17	Plastic blue	DIN EN ISO 228-1
151497	200.3812-2	G 3/8	12	7.5	44.5	20	20	Plastic blue	DIN EN ISO 228-1
151498	200.1210-2	G 1/2	10	10.0	41.0	24	17	Plastic blue	DIN EN ISO 228-1
151499	200.1212-2	G 1/2	12	10.0	44.5	24	20	Plastic blue	DIN EN ISO 228-1



202.146-2

**Straight non-return valve, flow direction from port to tube, conical male thread, coated**

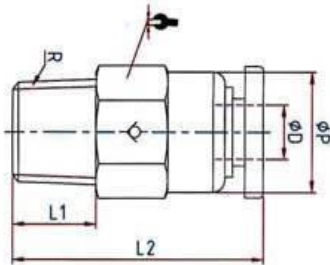
Art. No.	Type No.	Thread	for tube O.D. mm	L1 mm	L2 mm	a/f mm	Ø P mm	Sleeve	Standard thread
151500	202.184-2	R 1/8	4	7.5	28.0	10	10	Plastic blue	ISO 7-1
151501	202.186-2	R 1/8	6	7.5	30.0	12	12	Plastic blue	ISO 7-1
151502	202.188-2	R 1/8	8	7.5	33.0	14	14	Plastic blue	ISO 7-1
151503	202.146-2	R 1/4	6	10.0	30.0	14	12	Plastic blue	ISO 7-1
151504	202.148-2	R 1/4	8	10.0	35.5	14	14	Plastic blue	ISO 7-1
151505	202.3810-2	R 3/8	10	10.5	41.0	17	17	Plastic blue	ISO 7-1
151506	202.3812-2	R 3/8	12	10.5	44.5	21	20	Plastic blue	ISO 7-1
151507	202.1210-2	R 1/2	10	13.5	41.0	21	17	Plastic blue	ISO 7-1
151508	202.1212-2	R 1/2	12	13.5	44.5	21	20	Plastic blue	ISO 7-1



201.146-2

**Straight non-return valve, flow direction from tube to port, parallel male thread with O-ring (NBR)**

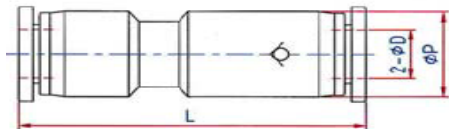
Art. No.	Type No.	Thread	for tube O.D. mm	L1 mm	L2 mm	a/f mm	Ø D1 mm	Sleeve	Standard thread
151509	201.54-2	M5	4	3.5	33.0	10	10	Plastic blue	DIN 13-1
151510	201.184-2	G 1/8	4	5.5	28.0	14	10	Plastic blue	DIN EN ISO 228-1
151511	201.186-2	G 1/8	6	5.5	30.0	14	12	Plastic blue	DIN EN ISO 228-1
151512	201.188-2	G 1/8	8	5.5	33.0	14	14	Plastic blue	DIN EN ISO 228-1
151513	201.146-2	G 1/4	6	6.5	30.0	17	12	Plastic blue	DIN EN ISO 228-1
151514	201.148-2	G 1/4	8	6.5	35.5	17	14	Plastic blue	DIN EN ISO 228-1
151515	201.3810-2	G 3/8	10	7.5	41.0	20	17	Plastic blue	DIN EN ISO 228-1
151516	201.3812-2	G 3/8	12	7.5	44.5	20	20	Plastic blue	DIN EN ISO 228-1
151517	201.1210-2	G 1/2	10	10.0	41.0	24	17	Plastic blue	DIN EN ISO 228-1
151518	201.1212-2	G 1/2	12	10.0	44.5	24	20	Plastic blue	DIN EN ISO 228-1



203.186-2

**Straight non-return valve, flow direction from tube to port, conical male thread, coated**

Art. No.	Type No.	Thread	for hose O.D. mm	L1 mm	L2 mm	a/f mm	Ø P mm	Sleeve	Standard thread
151519	203.184-2	R 1/8	4	7.5	28.0	10	10	Plastic blue	ISO 7-1
151520	203.186-2	R 1/8	6	7.5	30.0	12	12	Plastic blue	ISO 7-1
151521	203.188-2	R 1/8	8	7.5	33.0	14	14	Plastic blue	ISO 7-1
151522	203.146-2	R 1/4	6	10.0	30.0	14	12	Plastic blue	ISO 7-1
151523	203.148-2	R 1/4	8	10.0	35.5	14	14	Plastic blue	ISO 7-1
151524	203.3810-2	R 3/8	10	10.5	41.0	17	17	Plastic blue	ISO 7-1
151525	203.3812-2	R 3/8	12	10.5	44.5	21	20	Plastic blue	ISO 7-1
151526	203.1210-2	R 1/2	10	13.5	41.0	21	17	Plastic blue	ISO 7-1
151527	203.1212-2	R 1/2	12	13.5	44.5	21	20	Plastic blue	ISO 7-1



204.12-2

### Straight non-return valve with plug connection

Art. No.	Type No.	for hose O.D. mm	L mm	$\varnothing P$ mm	Material	Sleeve
151528	204.04-2	4	43.0	10.0	Nickel-plated brass	Plastic blue
151529	204.06-2	6	46.0	12.0	Nickel-plated brass	Plastic blue
151530	204.08-2	8	53.5	14.0	Nickel-plated brass	Plastic blue
151531	204.10-2	10	61.5	17.0	Nickel-plated brass	Plastic blue
151532	204.12-2	12	67.0	20.5	Nickel-plated brass	Plastic blue

### Note on the sealing effect of check valves

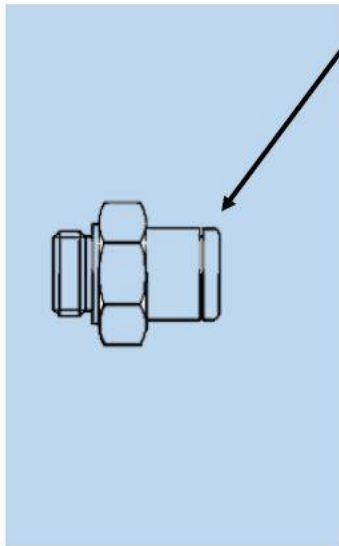
The pressure prevailing on the outlet side supports the shut-off components.

A minimum pressure of 1.3 bar (hose connection 4-8 mm) and 2 bar (hose connection 10-12 mm) is required to prevent backflow.

### Assembling instructions for push-in fittings

- Cut the hose ends plain. To ensure an ideal sealing effect and secure stop of the fitting make sure the hose end is not oval.
- Clean the hose ends and make sure that it is free of burrs.
- Push the hose ends into the fitting till it stops.
- Test stability by pulling the hose shortly.
- Push the release ring to release the hose.
- Pull out the hose with slight rotation.
- For a new assembling cut the hose plain again. Then pushing and releasing the tube should not be affected adversely.

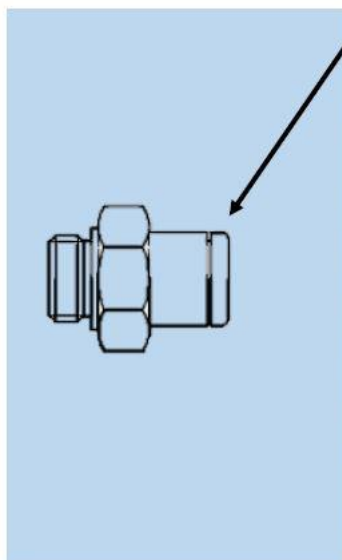
We recommend for improved strength of push-in fittings with **PA** hoses, the following push-in fitting - hose combination:



For tube O.D.	Recommended hose $\varnothing$	Recommended hose
3	3x1.5 *	259.08 X
4	4x2 *	259.09 X
5	5x3	259.10 X
6	6x4 *	259.11 X
8	8x6 *	259.12 X
10	10x7 *	259.61 X
12	12x9 *	259.14 X
14	14x11	259.62 X
16	16x12	259.25 X

\* Recommended and based on ISO 14743

We recommend for improved strength of push-in fittings with **PU** hoses, the following push-in fitting - hose combination:



For tube O.D.	Recommended hose $\varnothing$	Recommended hose
3	3x1.5 *	259.50 X
4	4x2 *	259.04 X
5	5x3	259.15 X
6	6x4 *	259.16 X
8	8x5 *	259.63 X
10	10x7 *	259.64 X
12	12x8 *	259.65 X
14	14x10	259.51 X
16	16x12	259.52 X

\* Recommended and based on ISO 14743