



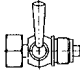
Stopcocks

Clamping sleeve / spigot

9020/M to 9021/M
9022/M to 9023/M
9021/ES to 9022/ES

G 1/4 / PN 6
G 1/2 / PN 25

Characteristics

Type of construction	Clamping sleeve / spigot 			
	Con- nection	PN [bar]	Material	Order No.
	G 1/4	6	Brass	9020/M
	G 1/2	25	Brass	9021/M
	G 1/2	25	Stainless steel	9021/ES
Test flange 60 x 25 x 10 mm	G 1/2	25	Brass	9022/M
Test flange 60 x 25 x 10 mm	G 1/2	25	Stainless steel	9022/ES
Test flange Ø 40 x 5	G 1/2	25	Brass	9023/M

Applications

It is useful to connect a stopcock between the pressure gauge and the pipeline. Stopcocks can be used for pressure gauges with a maximum rated pressure of PN 25 at a medium temperature of -10 to +50°C when measuring **non-toxic, non-flammable** liquids, gases and vapours. When the lever is set to the "discharge" position, the medium is discharged into the atmosphere. Shut-off valves should be used for higher pressures!

Stopcocks with a test port allow working pressure gauges and test pressure gauges to be connected to the pressure line simultaneously. The third outlet, which otherwise discharges into the atmosphere, is used in this case for the test pressure gauge.

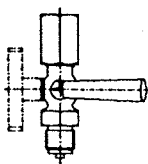
A **fourth plug position** allows the working and test pressure gauges to be connected to the pressure line simultaneously. They are otherwise used in the same way as standard stopcocks.

Designs

Standard type	Stopcocks with test port
DIN 16262	DIN 16263 (PN 16)
Connection at both ends acc. to table Three possible lever positions: - Vent position - Operating position - Discharge position	Connection at both ends acc. to table Four possible lever positions: - Vent position - Operating position - Discharge position - Test position

Operating principle

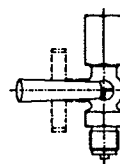
The plug of the cock has two holes in a tee arrangement. The following functions are possible depending on the position of the plug:



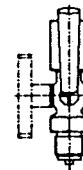
Vent position
Supply line closed,
pressure gauge not
in service



Operating position
Supply line open,
pressure gauge
pressurised



Discharge position
Supply line open,
pressure gauge not
in service



Test position
(cock with test
port only)

The operating positions are engraved on the plug:

Materials

Part	Order No.	
	9020/M to 9023/M	9021/ES and 9022/ES
Housing	Brass	Stainless steel 1.4571
Plug	Brass	Stainless steel 1.4571
Clamping sleeve	Phosphatised steel	Stainless steel 1.4305
Lever	Heat-resistant plastic	Heat-resistant plastic

Dimensions [mm]

Order No.	9020/M	9021/M 9021/ES	9022/M 9022/ES
Dimensions			
Order No.	9023/M		
Dimensions			