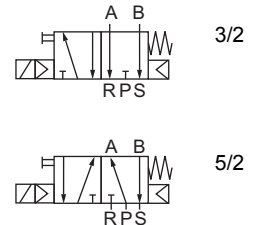


Pilot-operated 3/2 and 5/2-way spool valves with threaded ports and a NAMUR style interface. Combines high-quality design with a low price.

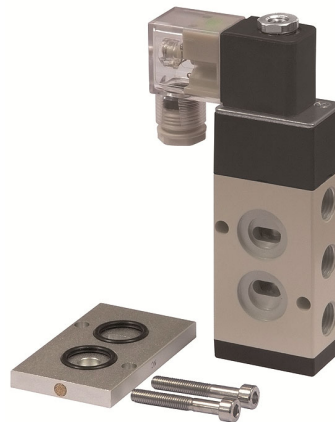
By adding the conversion plate supplied with each valve, the device can be adapted to a 3/2-way function.

The valve is turned on by a continuous signal. Turning off causes the piston to be returned to its initial position under pressure. Includes a manual operator as standard.

Medium:	Air, neutral gases (filtered)	
Working pressure:	1.5 to 8 bar	
Operating temperature:	-5 °C to +50 °C	
Housing:	Aluminium	
Sealant:	NBR	
Electrical connection:	Connector socket acc. to EN 175301-803 (PG9 form B) with LED display	
Control mode:	pilot-operated	
Power consumption:	AC = 5.5 VA	DC = 4.8 W
Degree of protection:	IP 65	
Cable connection:	DIN connector	
Switching frequency:	5/sec.	
Response time:	0.05 sec.	
Durability:	Cycles of operation 10 Mio.	
Manual control:	latching/non-latching	



552.04



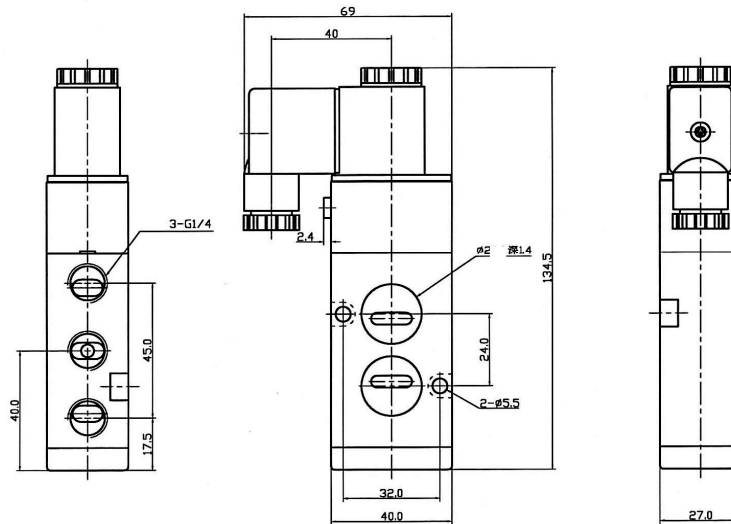
552.02 (new version)

3/2 and 5/2-way spool valves, with NAMUR style interface

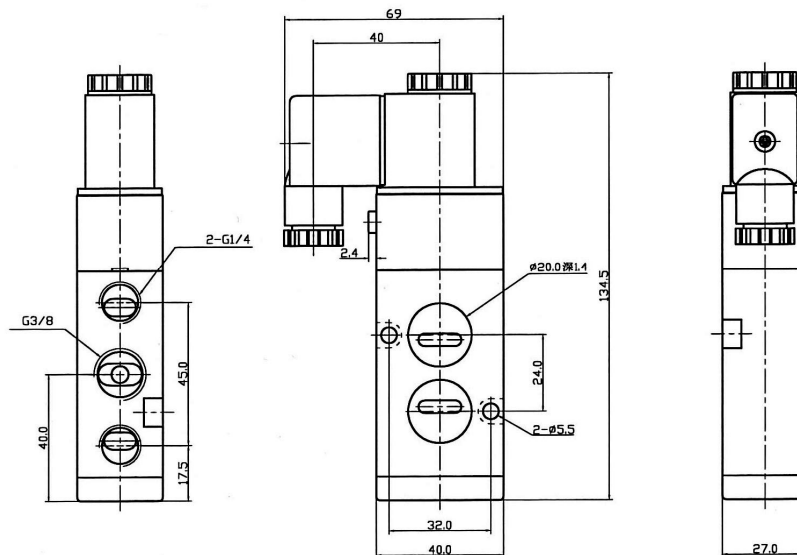
Art. No.	Type No.	Voltage	Port 1	Port 3 + 5	DN	Flow rate l/min
103649	552.01	230 V, 50 Hz	G 1/4	G 1/4	8	1370
130277	552.01*	230 V, 50 Hz	G 1/4	G 1/4	8	1370
103650	552.02	24 V DC	G 1/4	G 1/4	8	1370
130278	552.02*	24 V DC	G 1/4	G 1/4	8	1370
103651	552.03	230 V, 50 Hz	G 3/8	G 1/4	10	1650
103652	552.04	24 V DC	G 3/8	G 1/4	10	1650

* new version (no technical changes to the previous version).

Dimensions:



Type No. 552.01 and 552.02



Type No. 552.03 and 552.04