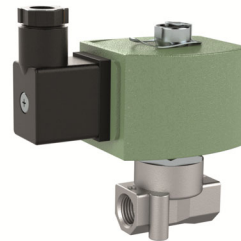
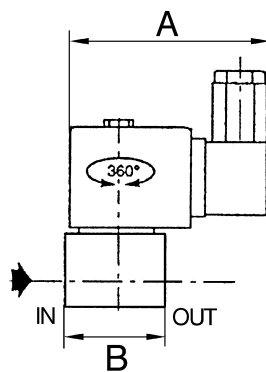
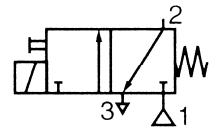


3/2-way type - normally closed - stainless steel.

Housing	Stainless steel
Internal parts	Stainless steel
Sealant	NBR
Electrical connection	for connector socket PG 11 P, acc. to DIN 4400
Function	NC
Protection IP	IP 65 (with connector socket fitted)
Medium temperature	-25 °C to 90 °C
Ambient temperature	-25 °C to 55 °C
DN	3.2



MV14ES24

Solenoid valve, normally closed, directly operated

Art. No.	Type No.	Thread	Voltage	Operating pressure	A mm	B mm
				min. / max. bar		
158061	MV14ES24	G 1/4	24 V DC	0 / 6	95.0	40.0
158062	MV14ES230	G 1/4	230 V AC, 50 - 60 Hz	0 / 10	95.0	40.0