



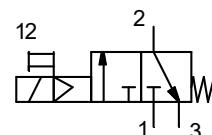
3/2-way pilot valves

Electro-pneumatic

Size 1

FU 923 - FU 923-AC FU 927-115V - FU 927	FU 924 - FU 924-AC FU 928-115V - FU 928
G 1/4	G 3/8

24V= – 24/50 – 115/50 – 230/50



Description

Electro-pneumatically operated **3/2-way** solenoid valve for pressurising and relieving downstream pneumatic systems by remote control.

The valve is operated by a **continuous electrical signal**.

Characteristics

Type	FU 923 - FU 923-AC - FU 927-115V - FU 927	FU 924 - FU 924-AC - FU 928-115V - FU 928
Port (thread)	G 1/4	G 3/8
Port (outlet / air relief)	G 1/4	G 1/4
Type of construction Start-up valve	3/2-way seat valve	
Medium	Compressed air, neutral gases	
Mounting position	Interconnected devices vertical / single devices any	
Temperature Medium / ambient	Max. 50°C	
Input pressure Pin	2 - 10 bar (higher pressures on request)	
Standard voltage	24 V= ; 24V/50Hz ; 115V/50Hz ; 230V/50Hz	
Cyclic duration factor	100%	
Nominal flow Qn	2000 l/min (Pin 6 bar, Δp = 1 bar)	
Operation	Electro-pneumatic	Optional: Pneumatic
Electrical connection	Connector EN 175301-803, form C / ISO 15217 2 poles + PE	
Mounting type	Bracket, wall mounting	

Materials

Part	Material:
Head piece	PA66 GF60
Cover	Schulaform®
Piston	Brass / NBR
Grooved ring	Al
Counter-pressure spring	Stainless steel
O-ring 32 x 2.5	NBR
Threaded plates	Die-cast zinc

Ordering information

- The valves are delivered in single packs
- Connector (form C) incl. in scope of supply

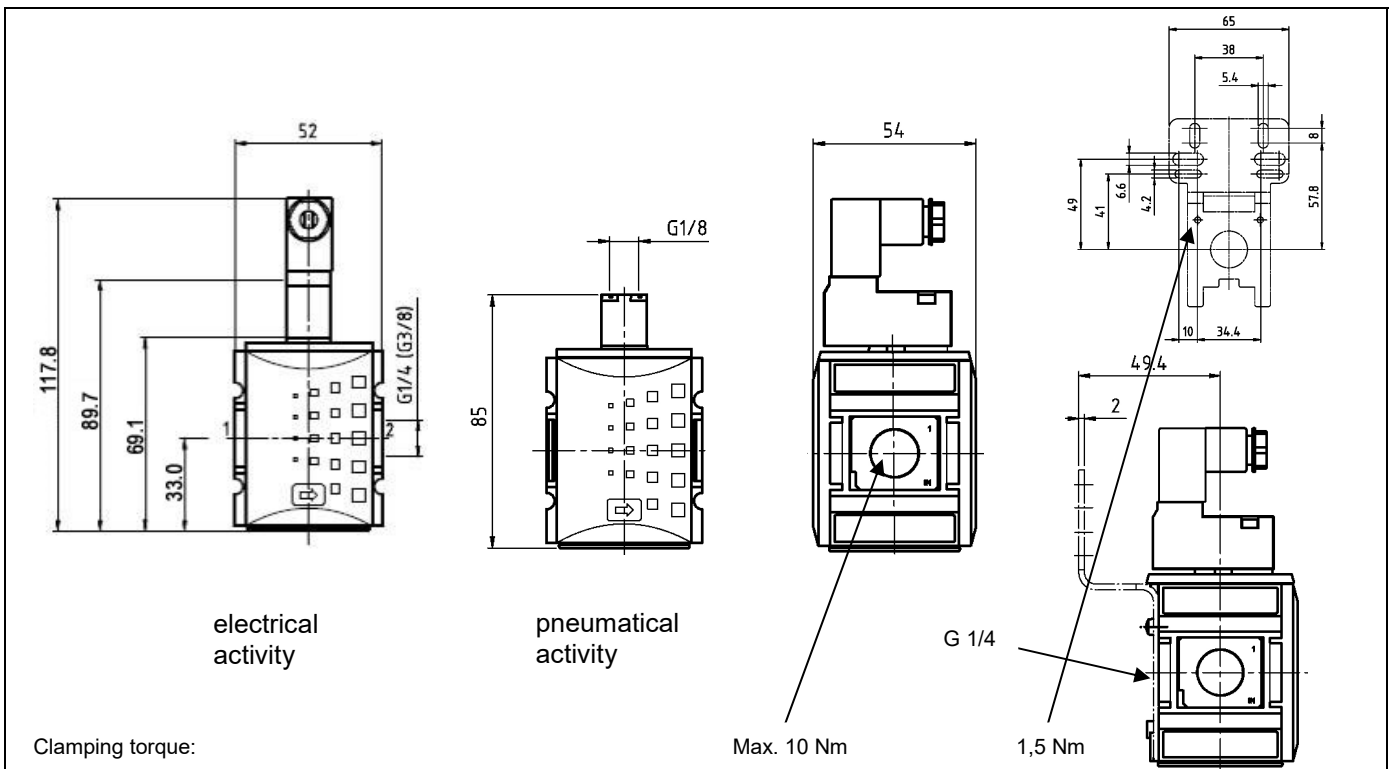
Accessories

Designation	Art. No.
Mounting bracket, incl. screws	H 850
Wall bracket, incl. screws	WK 100
Joiner set, incl. screws	KP 100
Silencer, sintered bronze, short	564-2
Connector, form C	1920.FU
Silencer, sintered bronze	567-2/M

Spare parts

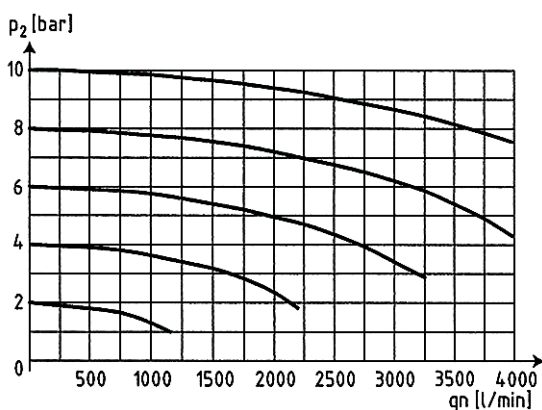
Designation	Art. No.
Solenoid 24 VDC	400-900-42
Solenoid 115 VAC/50 Hz	400-900-115
Solenoid 230 VAC/50 Hz	400-900-17
Solenoid 24 VAC/50Hz	400-900-301
Wall bracket with connection thread G 1/4	WK 101-14
Wall bracket with connection thread G 3/8	WK 101-38

Dimensions



Flow rates

Flow characteristic



Return exhaust

