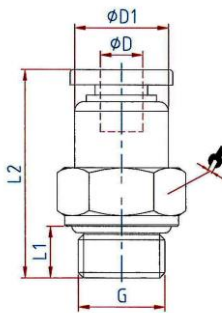
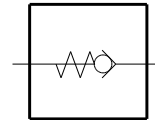


The non-return function of these push-in fittings prevents the air from flowing back; the unidirectional design means air flow is only possible in one direction. These valves are available with air flow from the port to the tube or from the tube to the port.

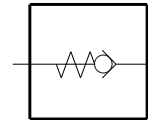
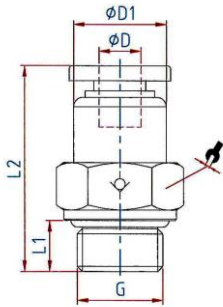
Areas of application:	Air, vacuum
Material:	Plastic and nickel-plated brass
Sleeve:	Plastic
Working pressure:	Max. 10 bar
Opening pressure:	0.2 bar
Temperature range:	0 °C to 60 °C
Sealing surface:	O-ring (NBR)
Port:	M thread acc. to DIN 13-1, with O-ring G thread acc. to DIN EN ISO 228-1, with O-ring R thread acc. to ISO 7-1, coated
Medium:	Compressed air
Recommended hose:	PU or PA (nylon)



200.148


Straight non-return valve, flow direction from port to tube, parallel male thread with O-ring (NBR)

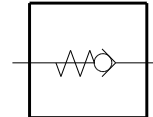
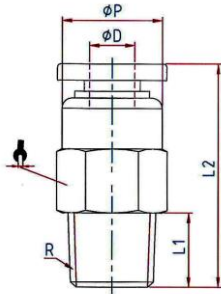
Art. No.	Type No.	Ø D mm	G mm	Ø D1 mm	L1 mm	L2 mm	a/f mm	Standard thread
110216	200.54	4	M5	10.0	3.5	31.0	10	DIN 13-1
110216 = discontinued product. No longer available. New product 151587 (200.54-1)								
110217	200.184	4	G 1/8	10.0	5.5	24.2	14	DIN EN ISO 228-1
110218	200.186	6	G 1/8	12.0	5.5	26.0	14	DIN EN ISO 228-1
110218 = discontinued product. No longer available. New product 151351 (200.186-1)								
110219	200.188	8	G 1/8	14.0	5.5	32.8	14	DIN EN ISO 228-1
110219 = discontinued product. No longer available. New product 151493 (200.188-2)								
110220	200.146	6	G 1/4	12.0	7.5	33.0	17	DIN EN ISO 228-1
110220 = discontinued product. No longer available. New product 151494 (200.146-2)								
110221	200.148	8	G 1/4	14.0	7.5	34.8	17	DIN EN ISO 228-1
110221 = discontinued product. No longer available. New product 151352 (200.148-1)								
110222	200.3810	10	G 3/8	17.0	7.5	41.0	20	DIN EN ISO 228-1
110223	200.3812	12	G 3/8	20.0	7.5	42.5	21	DIN EN ISO 228-1
110224	200.1210	10	G 1/2	17.0	10.0	43.0	24	DIN EN ISO 228-1
110225	200.1212	12	G 1/2	20.0	10.0	44.5	24	DIN EN ISO 228-1



201.148

Straight non-return valve, flow direction from tube to port, parallel male thread with O-ring (NBR)

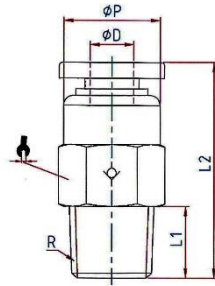
Art. No.	Type No.	Ø D mm	G mm	Ø D1 mm	L1 mm	L2 mm	a/f mm	Standard thread
110235	201.54	4	M5	10.0	3.5	31.0	10	DIN 13-1
110236	201.184	4	G 1/8	10.0	5.5	24.2	14	DIN EN ISO 228-1
110237	201.186	6	G 1/8	12.0	5.5	31.0	14	DIN EN ISO 228-1
110237 = discontinued product. No longer available. New product 151355 (201.186-1)								
110238	201.188	8	G 1/8	14.0	5.5	32.8	14	DIN EN ISO 228-1
110238 = discontinued product. No longer available. New product 151356 (201.188-1)								
110239	201.146	6	G 1/4	12.0	7.5	33.0	17	DIN EN ISO 228-1
110239 = discontinued product. No longer available. New product 151357 (201.146-1)								
110240	201.148	8	G 1/4	14.0	7.5	34.8	17	DIN EN ISO 228-1
110240 = discontinued product. No longer available. New product 151358 (201.148-1)								
110241	201.3810	10	G 3/8	17.0	7.5	41.0	20	DIN EN ISO 228-1
110242	201.3812	12	G 3/8	20.0	7.5	42.5	21	DIN EN ISO 228-1
110243	201.1210	10	G 1/2	17.0	10.0	43.0	24	DIN EN ISO 228-1
110244	201.1212	12	G 1/2	20.0	10.0	44.5	24	DIN EN ISO 228-1



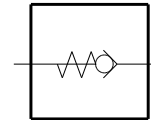
202.148

Straight non-return valve, flow direction from port to tube, conical male thread, coated

Art. No.	Type No.	Ø D mm	R mm	L1 mm	L2 mm	Ø P mm	a/f mm	Standard thread
110226	202.184	4	R 1/8	7.5	24.0	10.0	10	ISO 7-1
110226 = discontinued product. No longer available. New product 151353 (202.184-1)								
110227	202.186	6	R 1/8	7.5	31.0	12.0	12	ISO 7-1
110227 = discontinued product. No longer available. New product 151354 (202.186-1)								
110228	202.188	8	R 1/8	7.5	32.8	14.0	14	ISO 7-1
110229	202.146	6	R 1/4	9.5	33.0	14.0	14	ISO 7-1
110229 = discontinued product. No longer available. New product 151503 (202.146-2)								
110230	202.148	8	R 1/4	9.5	34.8	14.0	14	ISO 7-1
110230 = discontinued product. No longer available. New product 151504 (202.148-2)								
110231	202.3810	10	R 3/8	10.5	41.0	17.0	17	ISO 7-1
110232	202.3812	12	R 3/8	10.5	42.5	20.0	21	ISO 7-1
100233	202.1210	10	R 1/2	13.5	43.0	17.0	21	ISC
110234	202.1212	12	R 1/2	13.5	44.5	21.0	21	ISC

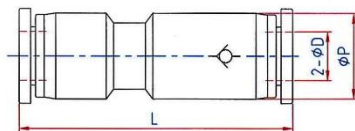


203.148

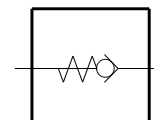


Straight non-return valve, flow direction from tube to port, conical male thread, coated

Art. No.	Type No.	Ø D mm	R mm	L1 mm	L2 mm	Ø P mm	a/f mm	Standard thread
110245	203.184	4	R 1/8	7.5	24.0	10.0	10	ISO 7-1
110246	203.186	6	R 1/8	7.5	26.0	12.0	12	ISO 7-1
110246 = discontinued product. No longer available. New product 151359 (203.186-1)								
110247	203.188	8	R 1/8	7.5	32.8	14.0	14	ISO 7-1
110247 = discontinued product. No longer available. New product 151521 (203.188-2)								
110248	203.146	6	R 1/4	9.5	33.0	12.0	14	ISO 7-1
110248 = discontinued product. No longer available. New product 151360 (203.146-1)								
110249	203.148	8	R 1/4	9.5	34.8	14.0	14	ISO 7-1
110249 = discontinued product. No longer available. New product 151361 (203.148-1)								
110250	203.3810	10	R 3/8	10.5	41.0	17.0	17	ISO 7-1
110251	203.3812	12	R 3/8	10.5	42.5	20.0	21	ISO 7-1
110252	203.1210	10	R 1/2	13.5	43.0	17.0	21	ISO 7-1
110253	203.1212	12	R 1/2	13.5	44.5	20.0	21	ISO 7-1



204.04



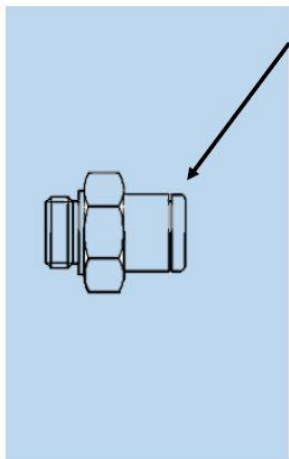
Straight non-return valve with plug connection

Art. No.	Type No.	Ø D mm	Ø P mm	L mm
110254	204.04	4	13.0	47.0
110254 = discontinued product. No longer available. New product 151362 (204.04-1)				
110255	204.06	6	13.0	46.0
110255 = discontinued product. No longer available. New product 151363 (204.06-1)				
110256	204.08	8	15.0	51.0
110256 = discontinued product. No longer available. New product 133936 (204.08)				
133936	204.08	8	14.8	53.0
133936 = discontinued product. No longer available. New product 151530 (204.08-2)				
110257	204.10	10	19.0	62.0
110257 = discontinued product. No longer available. New product 151364 (204.10-1)				
110258	204.12	12	21.5	64.0
110258 = discontinued product. No longer available. New product 151532 (204.12-2)				

Assembling instructions for push-in fittings

- Cut the hose ends plain. To ensure an ideal sealing effect and secure stop of the fitting make sure the hose end is not oval.
- Clean the hose ends and make sure that it is free of burrs.
- Push the hose ends into the fitting till it stops.
- Test stability by pulling the hose shortly.
- Push the release ring to release the hose.
- Pull out the hose with slight rotation.
- For a new assembling cut the hose plain again. Then pushing and releasing the tube should not be affected adversely.

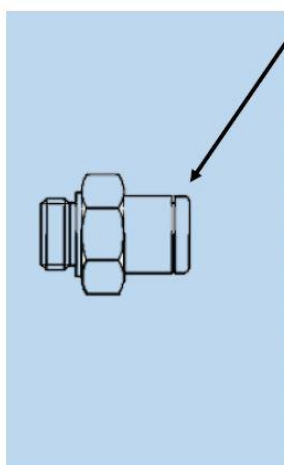
We recommend for improved strength of push-in fittings with **PA** hoses, the following push-in fitting - hose combination:



For tube O.D.	Recommended hose \emptyset	Recommended hose
3	3x1.5 *	259.08 X
4	4x2 *	259.09 X
5	5x3	259.10 X
6	6x4 *	259.11 X
8	8x6 *	259.12 X
10	10x7 *	259.61 X
12	12x9 *	259.14 X
14	14x11	259.62 X
16	16x12	259.25 X

* Recommended and based on ISO 14743

We recommend for improved strength of push-in fittings with **PU** hoses, the following push-in fitting - hose combination:



For tube O.D.	Recommended hose \emptyset	Recommended hose
3	3x1.5 *	259.50 X
4	4x2 *	259.04 X
5	5x3	259.15 X
6	6x4 *	259.16 X
8	8x5 *	259.63 X
10	10x7 *	259.64 X
12	12x8 *	259.65 X
14	14x10	259.51 X
16	16x12	259.52 X

* Recommended and based on ISO 14743