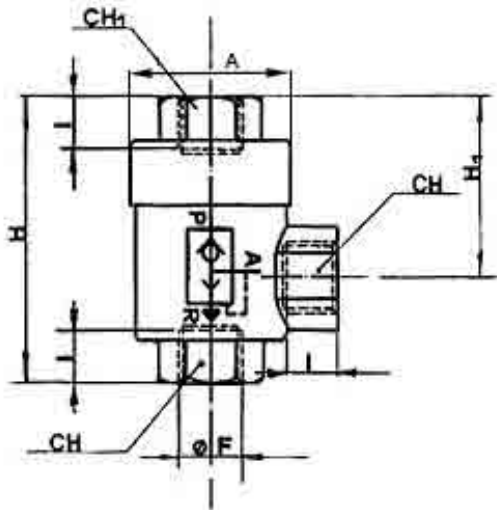


Body:  
 Diaphragm:  
 Minimum working pressure:  
 Operating pressure:  
 Operating temperature:  
 Port:

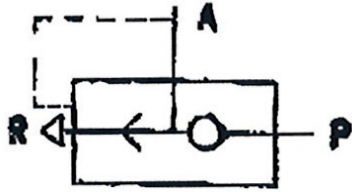
Nickel-plated brass  
 Polyurethane  
 0.5 bar  
 Max. 12 bar  
 -20 °C to +80 °C  
 G thread acc. to DIN EN ISO 228-1



500.12

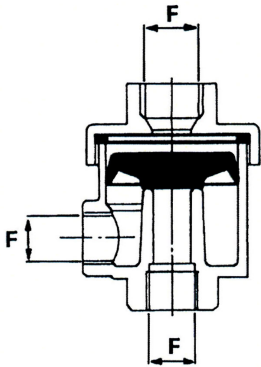
**Quick-exhaust valves**

Art. No.	Type No.	F	I	H	H1	CH	CH1	A
107051	500.18	G 1/8	8.0	42.0	28.0	14	14	28.0
107052	500.14	G 1/4	11.0	53.0	34.5	19	19	33.0
107053	500.12	G 1/2	14.0	71.0	44.0	26	26	43.0
On request	500.34	G 3/4	18.0	86.0	52.0	32	32	-
On request	500.1	G 1	19.0	94.0	56.0	38	38	-



Art. No.	Type No.	Thread	DN	Flow from P to A l/min	Flow from A to R l/min
107051	500.18	G 1/8	6	650	900
107052	500.14	G 1/4	8.5	1100	1550
107053	500.12	G 1/2	14	3600	4400

### Replacement diaphragms



Art. No.	Type No.	Designation	F
107054	501.18	For G 1/8 exhaust valve Type No. 500.18	G 1/8
107055	501.14	For G 1/4 exhaust valve Type No. 500.14	G 1/4
107056	501.12	For G 1/2 exhaust valve Type No. 500.12	G 1/2