



Characteristics

Type	570.14 B	570.14 D
Type of construction	Diaphragm pressure regulator with self-relieving design (reversible)	
Type	571.14 B	571.14 D
Type of construction	Diaphragm pressure regulator with non-self-relieving design (non-reversible)	
Pipe thread	G 1/4	
Pressure gauge	G 1/4	
Control range	0.5 to 8.0 bar	1.0 to 15.0 bar
	Special versions on request	
	- NPT threads	
Input pressure	Max. 30 bar	Max. 50 bar
Mounting position	Any	
Mounting type	Bracket and nut, hole Ø 45.5 mm	
Temperature		
Medium	Max. 80°C	
Ambient	Max. 80°C	
Weight [g]	1300 / 1450 with pressure gauge	

Materials

Part	Material
Head piece	1.4404 (AISI 316L)
Spring bonnet	1.4404 (AISI 316L)
Adjusting screw	1.4301
Diaphragm, type 570	PTFE on NBR-carrier
Diaphragm, type 571	PTFE on NBR-carrier
Valve cone	1.4404 (AISI 316L) / FKM
O-rings	FKM

Main spare parts

Designation	Part No.
Repair kit	
- Type 570	22.5704.4
- Type 571	22.5714.4.16
Pressure gauge, 1.4571	
G 1/4, Ø 63 mm	
0 to 10.0 bar	4084
0 to 16.0 bar	4085

Operation

- Stainless steel pressure regulator containing no non-ferrous metals for use in the food processing, chemical, mining, plant construction and special machinery industries
- Suitable for use in medical technology
- All applications where excellent resistance to corrosion is essential

- **For liquid media → Type 571.14**

No liability can be accepted if explosive media or media which could be detrimental to health are used

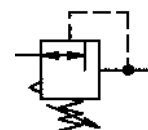
Pressure regulator

Size 1

G 1/4

0.5 to 8.0 bar
1.0 to 15.0 bar

570.14
571.14

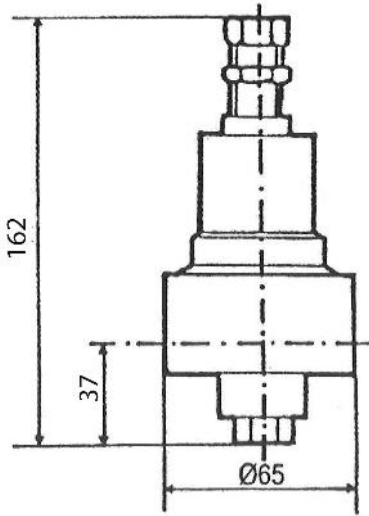


Ordering information

Designation	Order No.
Pressure regulator with self-relieving design (reversible) and pressure gauge	
Control range	
0.5 to 8.0 bar	570.14 B
1.0 to 15.0 bar	570.14 D
Pressure regulator with non-self-relieving design (non-reversible) and pressure gauge	
Control range	
0.5 to 8.0 bar	571.14 B
1.0 to 15.0 bar	571.14 D
Accessories	
- Mounting bracket with fixing nut M45 x 1.5	576/1
- Pressure gauge	
0 to 10 bar	4084
0 to 16 bar	4085

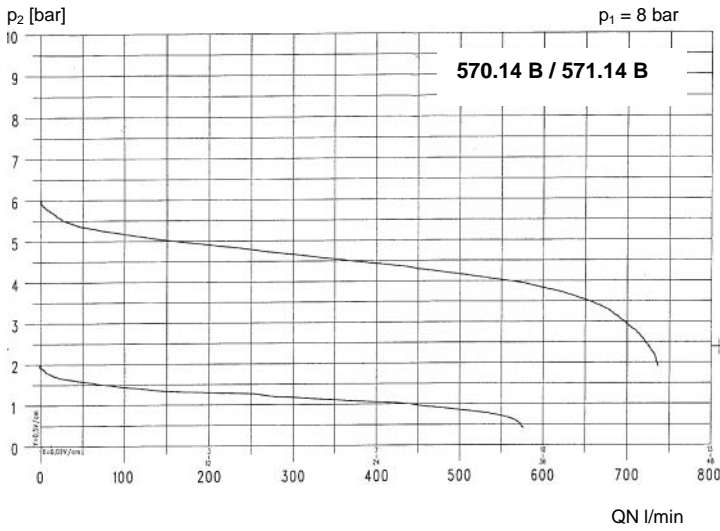


Dimensions [mm]



Type	Press. gauge Ø	Pipe thread G	Pr. gauge port G
570.14 571.14	63	1/4	1/4

Flow characteristic



Hysteresis

