



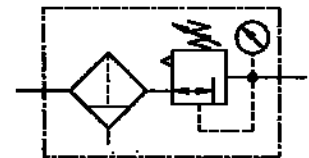
Filter regulator

Size 5

C 54*
G 3/4

C 55
G 1

1.1 to 3 bar
1.2 to 6 bar
0.5 to 10 bar
0.5 to 16 bar

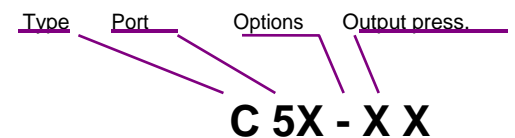


*On request

Characteristics

Type	C 54	C 55
Port	G 3/4	G 1
Pressure gauge port	G 1/4	
Type of construction	Diaphragm pressure regulator with self-relieving design Pilot-controlled Centrifugal filter Sintered filter element	
	Special versions on request	
Input pressure p1	Max. 16 bar with plastic bowl Max. 20 bar with metal bowl	
Input pressure p1 with fully-automatic drain	Max. 16 bar Min. 1.5 bar	
Control range p2	0.1 to 3 bar / 0.2 to 6 bar 0.5 to 10 bar / 0.5 to 16 bar	
Mounting position	Vertical, drain plug at bottom	
Mounting type	In-line Bracket	
Medium temperature	Max. 60 °C (other temperature	
Ambient temperature	Max. 60 °C ranges on request)	
Filter rating	40 µm, 8 µm on request	
Bowl capacity	Max. 125 cm³ condensate	
Condensate drain	Semi-automatic Fully-automatic on request	
Weight [g]	2050 / 2150 with pressure gauge	
Internal air consumption	Depending on secondary pressure	

Ordering information



Order example: C 55-K 10-HA

Port	
54	G 3/4
55	G 1
Options	
K-HA	Plastic bowl
M-SR	Metal bowl with sight glass
S	Bowl guard

Please use the suffix »A« to order fully-automatic drain

Description

- Block design
- Simple block mounting with other devices using conical clamps and half threads
- Joiner sets (KP 55) required for block mounting
- Joiner sets (KP 55 Z) required for block mounting with K 55 ball valve and T 55 diverter block
- Pressure setting can be locked by pushing the knob down
- Flow direction indicated by arrows
- **Entry in direction of arrow**
- **Independent of inlet pressure**
- Pressure gauge Ø 63 mm included
- Pressure gauge can be mounted at both ends
- Lockable adjusting knob (**on request**)
- Filter rating acc. to ISO 4003, glass bead test
- Bowl guard can be retrofitted without tools

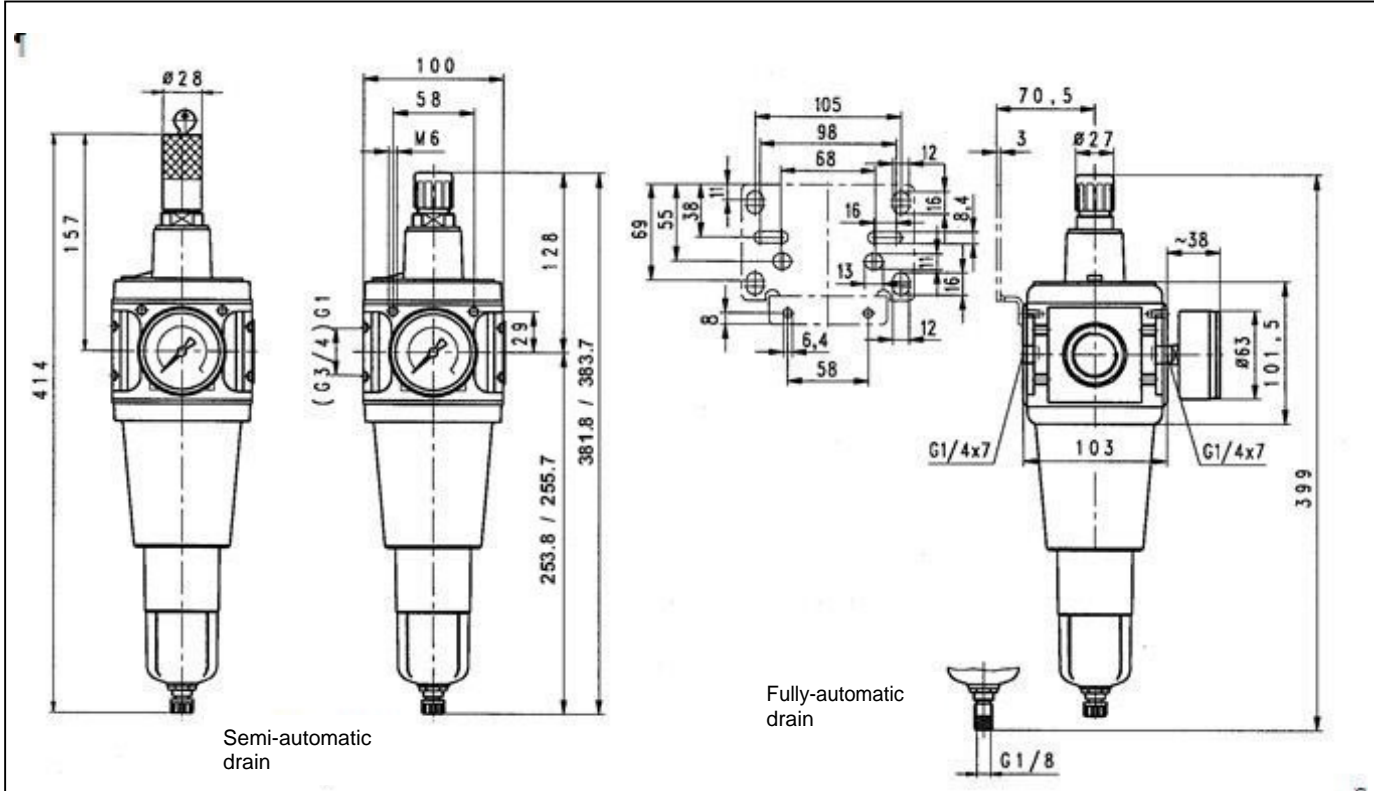
Main spare parts

Part	Part No.
→ Set of wearing parts	22.355.4
Pr. gauge Ø 63 mm, G1/4	
0 to 4 bar	215-KD
0 to 6 bar	216-KD
0 to 10 bar	217-KD
0 to 16 bar	218-KD

Materials

Part	Material
Head piece (body)	Al
Spring bonnet	POM-brass
Diaphragm	NBR-brass-Al
Pressure spring	Galvanised steel
Valve cone	NBR-brass
Counter-pressure spring	Stainless steel
O-ring 50 x 2	NBR
O-ring 80 x 2.5	NBR
Spring bonnet, lockable	POM-brass
Lock cylinder	Brass
Filter element 40 µm	PE
Condensate bowl	Polycarbonate
Baffle	PA

Dimensions [mm]



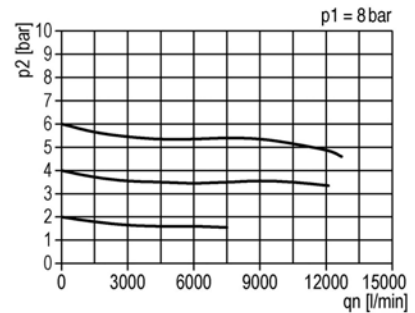
Flow rates

Flow rates at $p_1 = 8 \text{ bar}$

Art. No.		C 55	
Output pressure $p_2 = 6 \text{ [bar]}$	QN m^3/h	720	
Nominal flow ($\Delta p = 1 \text{ bar}$)	l/min	12000	

Flow characteristic

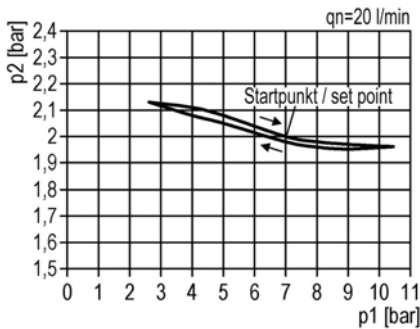
Control range 0.5 to 10 bar



Hysteresis

Hysteresis of p_2 as a function of rising (falling)

p_1 at a constant draw-off rate QN 20 l/min
Basic setting (starting point): $p_1: 7.0 \text{ bar}$
 $p_2: 2.0 \text{ bar}$



Accessories

Designation	Order No.
Mounting bracket with 2 screws, compl.	ZW 55
Joiner set	KP 55
Joiner set for narrow diverter block	KP 55 Z
Metal bowl with sight glass	MS 33 FS
Metal bowl with sight glass and fully-autom. drain valve	MS 33 FS-A
Polycarbonate bowl with semi-automatic drain valve	KS 33 F-HA
Polycarbonate bowl with fully-automatic drain valve	KS 33 F-A
Filter element 40 μm	655.6.940
8 μm	655.6.908
Automatic drain	655.6.900
Bowl guard	SK 33

Art. No.	Ident No.
C 55-K 3-HA	100484
C 55-K 6-HA	100485
C 55-K 10-HA	100486
C 55-K 16-HA	100487
C 55 - S	100492
C 55 M-SR	100497
22.355.4	100509
215-KD	101223
216-KD	101224
217-KD	101244
218-KD	101398
ZW 55	100445
KP 55	100446
KP 55 Z	123922
MS 33 FS	100502
MS 33 FS-A	100503
KS 33 F-HA	100504
KS 33 F-A	100505
655.6.940	100511
655.6.908	100510
655.6.900	100362
SK 33	100506