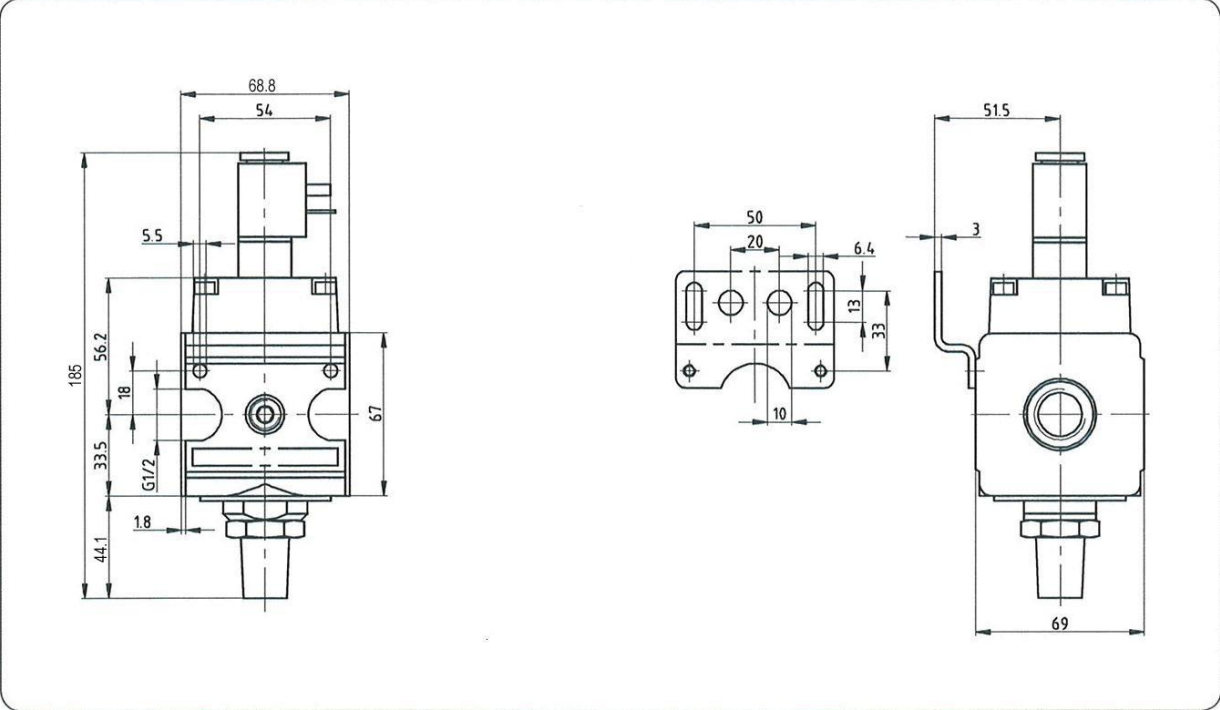
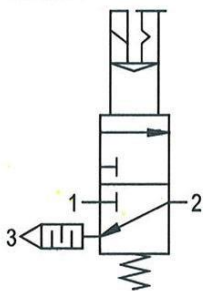


dimensions (mm)

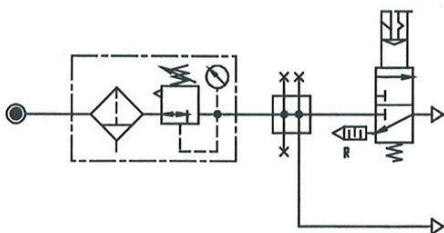


standard

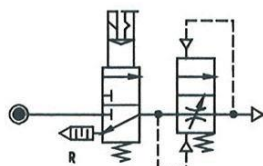


various application

filter-regulator distributor 3/2-path-valve 3/2-path-valve pressurising unit



compressed-air plants or parts of plants can be switched on or switched off and ventilated.



aeration of the mechanery over throttle setting of the starting valve. When P2 ≥ 50% opens P1 full profile. Pressure release over R

accessories

<p>mounting bracket</p> <p>Article no. ZW 33</p>	<p>solenoid coil</p> <p>Article no. S 11-19N (230 VAC / 50 Hz)</p>
<p>solenoid coil</p> <p>Article no. S 11-29N (110 VAC / 50 Hz)</p>	<p>solenoid coil</p> <p>Article no. S 11-10V (24 VDC) Article no. S 11-30N (24 VAC / 50 Hz)</p>
<p>Article no. S 11-38N (3/2-way directional control valve for pilot control with manual operation for on-off valves)</p>	<p>connector socket</p> <p>Article no. 1920.9B</p>