

Rotary switch can be turned 90°, lockable, with relief port including silencer.

Input pressure:
Vent port:
Medium temperature:
Ambient temperature:
Housing:
Operation:
Sealant:
Flow rate measurement:

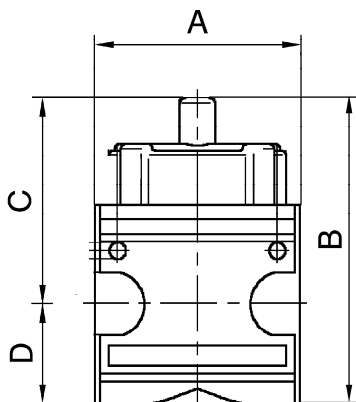
Max. 16 bar
G 1/2
Max. 60 °C
Max. 60 °C
Aluminium
Twist knob, rotatable 90°
NBR
At $P_1 = 6$ bar and pressure drop $\Delta p = 1$ bar



K 55

Ball valves, 3/2-way

Art. No.	Ident No.	Thread	Flow rate l/min	A mm	B mm	C mm	D mm
K 55	100615	G 1	25000	82.8	133.5	83.0	50.5



flow characteristic

