

## »multifix« series

Diaphragm pressure regulator, self-relieving, with pneumatic remote control. The pressure is set with a pilot pressure regulator (1:1 ratio). The output pressure corresponds to the set pressure of the pilot pressure regulator. Either a standard or a precision pressure regulator can be used to regulate the pilot pressure.

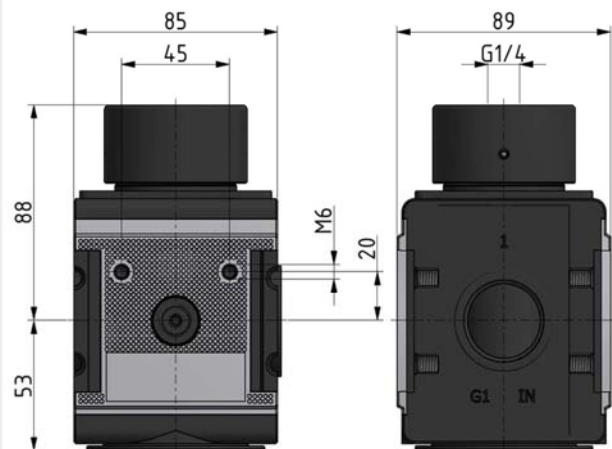
Max. input pressure:	16 bar
Max. medium temperature:	60 °C
Max. ambient temperature:	60 °C
Sealant:	NBR
Flow rate measurement:	At $P_1 = 8$ bar, $P_2 = 6$ bar and pressure drop $\Delta p = 1$ bar

### Pressure regulator with pneumatic remote control, without pressure gauge

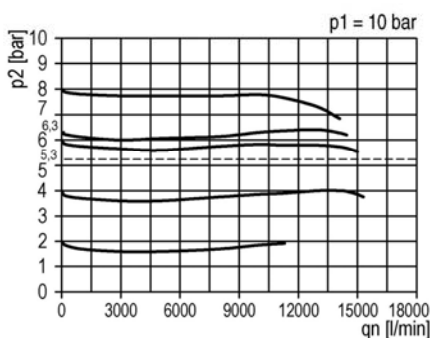
Art. No.	Type No.	Thread	Pilot air connection	Housing	Flow rate l/min	Size	DN
133106	RI 45	G 1	G 1/4	Die-cast aluminium	12500	4	25

### Accessories / spare parts

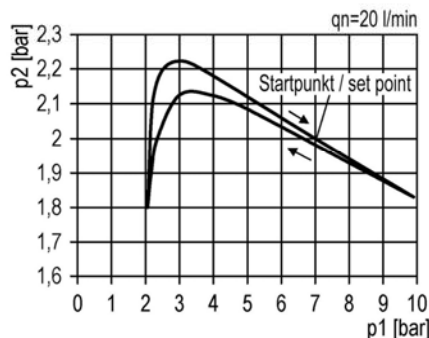
Art. No.	Type No.	Description
135858	ZW 45	Mounting bracket with 2 screws
135857	KP 45	Coupler pack for modular assembly of several devices
135856	22.18945.4	Set of wearing parts



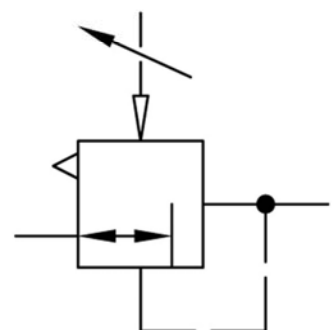
flow characteristic



pressure characteristic



symbol



### Department eDocumentation

Phone +49 7125 9497-41, -42, -53, -260, -330

Fax +49 7125 9497-99

e-mail: [eDocumentation@riegler.de](mailto:eDocumentation@riegler.de)

edition 07/2016

**RIEGLER & Co. KG**
[www.riegler.net](http://www.riegler.net)

Subject technical changes.