



Filter regulators

Size 3

C 33

G 1/2

1.1 to 3 bar

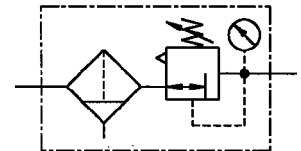
1.2 to 6 bar

0.5 to 10 bar

0.5 to 15 bar

C 34

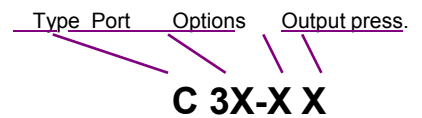
G 3/4



Characteristics

Type	C 33	C 34
Port	G 1/2	G 3/4
Pressure gauge port	G 1/4	
Type of construction	Diaphragm pressure regulator with self-relieving design Centrifugal filter Sintered filter element Special versions on request e.g. - Reverse flow port closed	
Input pressure p_1	Max. 16 bar with plastic bowl Max. 20 bar with metal bowl	
Input pressure p_1 with fully-automatic drain	Max. 16 bar Min. 1.5 bar	
Control range p_2	0.1 to 3 bar / 0.2 to 6 bar 0.5 to 10 bar / 0.5 to 16 bar	
Mounting position	Vertical, drain plug at bottom	
Mounting type	Bracket and nut, hole $\varnothing 50.5$ Bracket or two through holes	
Medium temperature	Max. 60 °C (other temperature ranges on request)	
Ambient temperature	Max. 60 °C	
Filter rating	5 μm , 8 μm on request	
Bowl capacity	Max. 50 cm ³ condensate	
Condensate drain	Semi-automatic Fully-automatic on request	
Weight [g]	991 / 1076 with pressure gauge	

Ordering information



Order example: C 33-K 10-HA

Port	
33	G 1/2
34	G 3/4
Options	
K-HA	Plastic bowl
M-SR	Metal bowl with sight glass
S	Bowl guard

Please use the suffix »A« to order fully-automatic drain

Description

- Block design
- Simple block mounting with other devices using conical clamps and half threads
- Joiner sets (**KP 33**) required for block mounting
- Pressure setting can be locked by pushing the knob down
- Flow direction: -Entry in direction of arrow
- **Independent of inlet pressure**
- Pressure gauge $\varnothing 50$ mm included
- Pressure gauge can be mounted at both ends
- Lockable adjusting knob (**on request**)
- Filter rating acc. to ISO 4003
- Bowl guard can be retrofitted without tools

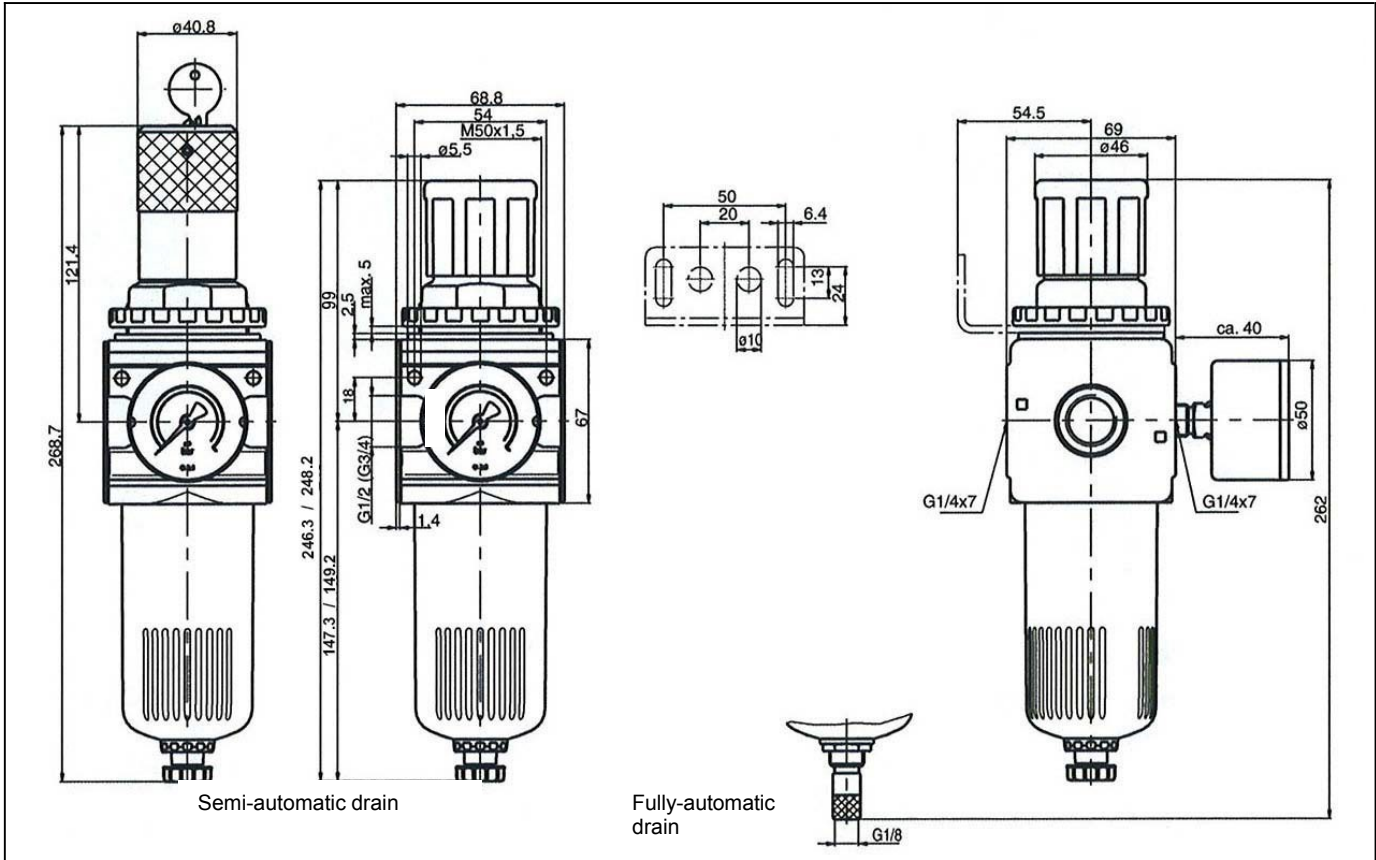
Materials

Part	Material
Head piece (body)	Z 410
Spring bonnet	POM
Diaphragm	→ NBR-brass
Pressure spring	Galvanised steel
Valve cone	→ NBR-brass
Counter-pressure spring	Stainless steel
O-ring 50x2	→ NBR
Spring bonnet, lockable	POM-AI
Lock cylinder	Brass
Filter element 5 μm	PE
Condensate bowl	Polycarbonate
Baffle	PA

Main spare parts

Part	Part No.
→ Set of wearing parts - Diaphragm, compl. - Valve cone, compl. - O-ring 50x2	22.1833.4
Pr. gauge $\varnothing 50$ mm, G1/4	
0 to 4 bar	204-KD
0 to 6 bar	205-KD
0 to 10 bar	206-KD
0 to 16 bar	207-KD

Dimensions [mm]



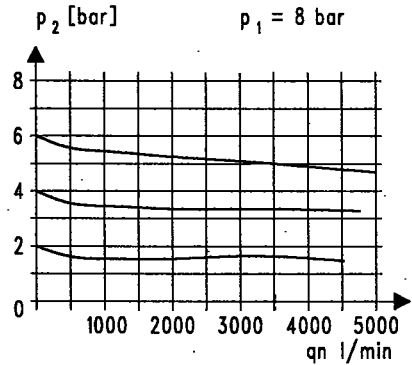
Flow rates

Flow rates at $p_1 = 8 \text{ bar}$

Art. No.		C 33	C 34
Output pressure $p_2 = 6 \text{ [bar]}$	QN m^3/h	210	210
Nominal flow ($\Delta p = 1 \text{ bar}$)	l/min	3500	3500

Flow characteristic

Control range 0.5 to 10 bar



Hysteresis

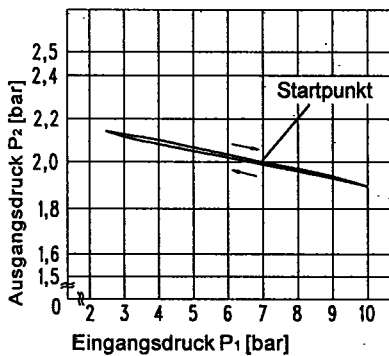
Hysteresis of p_2 as a function of rising (falling)

p_1 at a constant draw-off rate QN 20 l/min

Basic setting (starting point): $p_1: 7.0 \text{ bar}$

$p_2: 2.0 \text{ bar}$

$q_n = 20 \text{ l}/\text{min}$



Accessories

Designation	Order No.
Nut M50x1.5	R 33-55
Mounting bracket with nut R 33-55	MV 50
Mounting bracket with 2 screws, compl.	ZW 33
Joiner set	KP 33
Joiner set for narrow diverter block	KP 33 Z
Metal bowl with sight glass	MS 33 FS
Metal bowl with sight glass and fully-autom. drain valve	MS 33 FS-A
Polycarbonate bowl with semi-automatic drain valve	KS 33 F-HA
Polycarbonate bowl with fully-automatic drain valve	KS 33 F-A
Bowl guard	SK 33
Filter element 5 μm	633.6.905
Filter element 8 μm	653.6.908
Automatic drain	655.6.900

Art. No.	Ident No.
C 33-K 3-HA	100476
C 33-K 6-HA	100477
C 33-K 10-HA	100478
C 33-K 16-HA	100479
C 34-K 3-HA	100480
C 34-K 6-HA	100481
C 34-K 10-HA	100482
C 34-K 16-HA	100483
C 33 - S	100490
C 34 - S	100491
C 33 M-SR	100495
C 34 M-SR	100496

Art. No.	Ident No.
22.1833.4	100444
204-KD	101675
205-KD	101676
206-KD	101677
207-KD	101678
R 33-55	100440
MV 50	100439
ZW 33	100441
KP 33	100442
KP 33 Z	100443
MS 33 FS	100502
MS 33 FS-A	100503
KS 33 F-HA	100504
KS 33 F-A	100505
SK 33	100506
633.6.905	100507
653.6.908	100983
655.6.900	100362