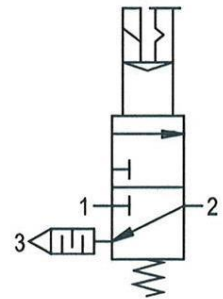


item	type	S 11
port size	G 1/4	
medium	compressed air, neutral gases	
description	3/2-path-poppel-valve	
mounting	arbitrary	
supply pressure	max. 10bar, min. 2bar, o. press. ranges available upon request	
nominal voltage	24 V = ; 48 V 50/60 Hz	
relative operating duration	ED 100%	
medium and ambient temperature	max. 60°C	
nominal discharge	Qn 900 l/min (Pe = 6 bar, delta P = 1 bar)	
manipulation	elektric standard, pneumatic	
kind of isolation	IP 65 (P 54) according to DIN 40050	
elektrical connection	connector socket DIN 43650, form B industry, PG 9	
fixing	2 holes in the body or bracket	
weight	0,446 kg	



replacement parts

no	description	material	order-no
1	body	Z 410	
2	plunger	Al	
3	tracer point	NBR - brass	
4	V-ring	NBR	
5	valve cone	NBR - brass	
6	spring	stainless steel	
7	o-ring 30 x 2	NBR	
8	solenoid coil		
9	3/2-path-valve		
10	socket coupling PG 9 form B, EN 175301-803		
11	connecting piece	Al	



series 1

ordering information

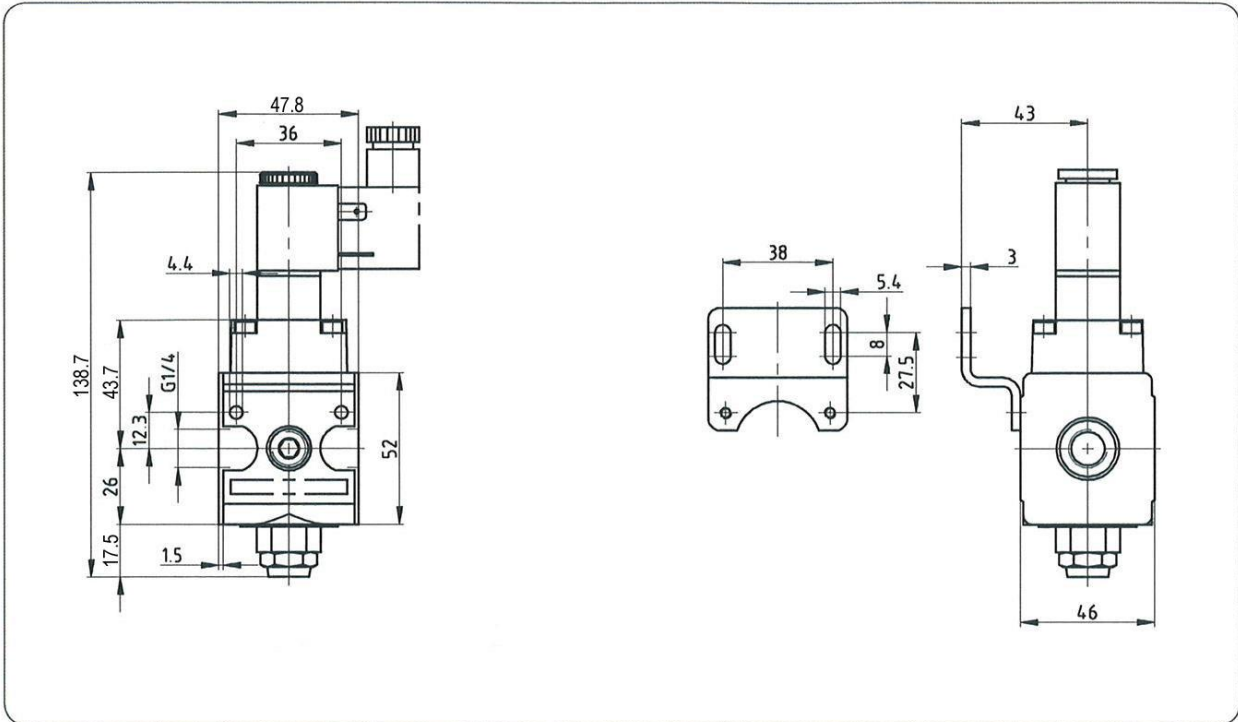
S 11 - *

type

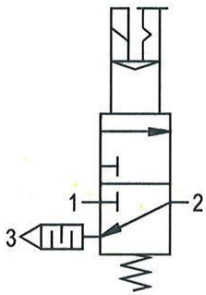
1 port size 2 option

ordering example: S 11 - 1

port size	
1	11 G 1/4
2	
options	
1	24 VAC / 50 Hz
2	230 VAC / 50 Hz
3	110 VAC / 50 Hz
4	24 VDC

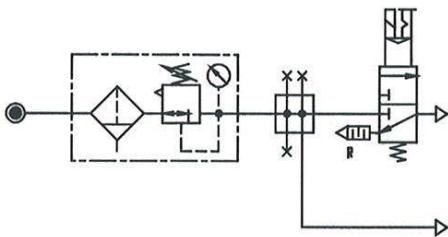


standard

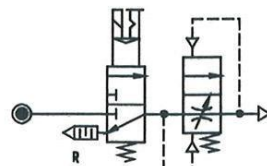


various application

filter-regulator distributor 3/2-path-valve 3/2-path-valve pressurising unit



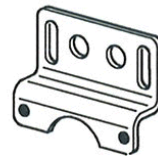
compressed-air plants or parts of plants can be switched on or switched off and ventilated.



aeration of the mechanery over throttle setting of the pressurising unit. When P2 \geq 50% opens P1 full profile. Pressure release over R.

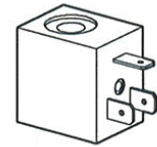
accessories

mounting bracket



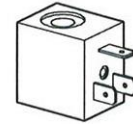
Article no. ZW 33

solenoid coil



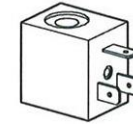
Article no. S 11-19N
(230 VAC / 50 Hz)

solenoid coil



Article no. S 11-29N
(110 VAC / 50 Hz)

solenoid coil

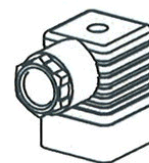


Article no. S 11-18N
(24 VDC)
 Article no. S 11-30N
(24 VAC / 50 Hz)

Article no. S 11-38N

(3/2-way directional control valve for pilot control with manual operation for on-off valves)

connector socket



Article no. 1920.9B