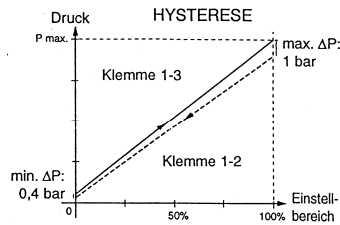
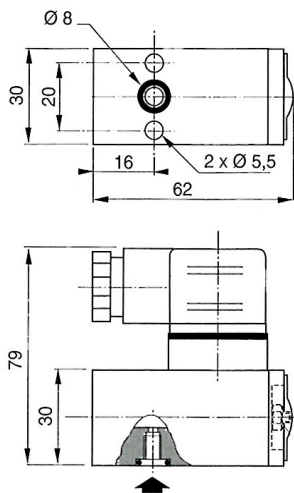


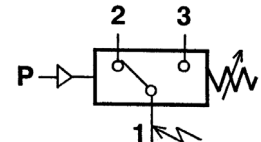
Subbase mounted body



Art. No. 100280

Type No. DS 9410

0.5 to 10.0 bar



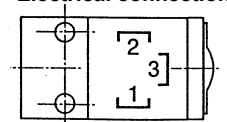
Characteristics

Order No.	DS 9410
Adjustment range [bar]	0.5 to 10.0
Function	Changeover contact
Connection	Subbase mounted
General	
Type of construction	Spring-loaded diaphragm
Diaphragm	NBR
Mounting type	Two through holes in the housing
Port	Flange mounting (optional: G 1/4)
Mounting position	Any
Operating temperature	-10 °C to +60 °C
Media	Air, neutral gases, filtered, lubricated or unlubricated
Weight [g]	110
Mechanical endurance	5 x 10 ⁶ operations
Material	Plastic (PA61/XT)
Adjustment	Screw with lock nut
Pneumatic	
Max. pressure [bar]	16.0
Adjustment	Under pressure
Hysteresis	0.4 bar at the beginning of the adjustment range, 1 bar at the end of the adjustment range
Electrical	
Max. voltage	250 V AC/DC
Switching element	Microswitch
Max. switching frequency	60 cycles/min.
No. of poles	3
Electrical connection	ISO 4400, CM10 (Pg 11P) cable socket, (4 contacts), can be turned 90°
Degree of protection	IP65

Electrical characteristics – breaking capacity

Supply voltage [V]	DC		AC	
	Resistive load [A]	Inductive load [A]	Resistive load [A]	Inductive load [A]
30	5	3	-	-
115	0.4	0.05	5	3
250	0.25	0.02	5	3

Electrical connection



Important

- Currents which are too high may damage the contacts.
- Spark-quenching devices must be provided in inductively loaded DC circuits, e.g. magnets.
- Do not use the pressure switch as the sole means of disconnecting a device from the mains.