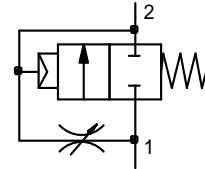




Start-up valve, pneumatic

Size 1

VA 22
VA 23
G 1/4
G 3/8


Characteristics

Type	VA 22	VA 23
Connection	G 1/4	G 3/8
Type of construction	Start-up valve (air valve) - Adjustable restrictor	
Working pressure	2 to 25 bar	
Switching point (full cross-section open)	Approx. 0.6 bar working pressure (pressure at input)	
Medium temperature Ambient temperature	max. 80 °C	
Weight [g]	295	

Ordering information

Type	Connection	Variants
VA	2X	X

Connection	
X = 2	G 1/4
X = 3	G 3/8
Order example: VA 22	

Description

- Block design
- **Flow direction** indicated by **arrows** on front plate
- Screwdriver required to adjust the throttle screw (blade width)

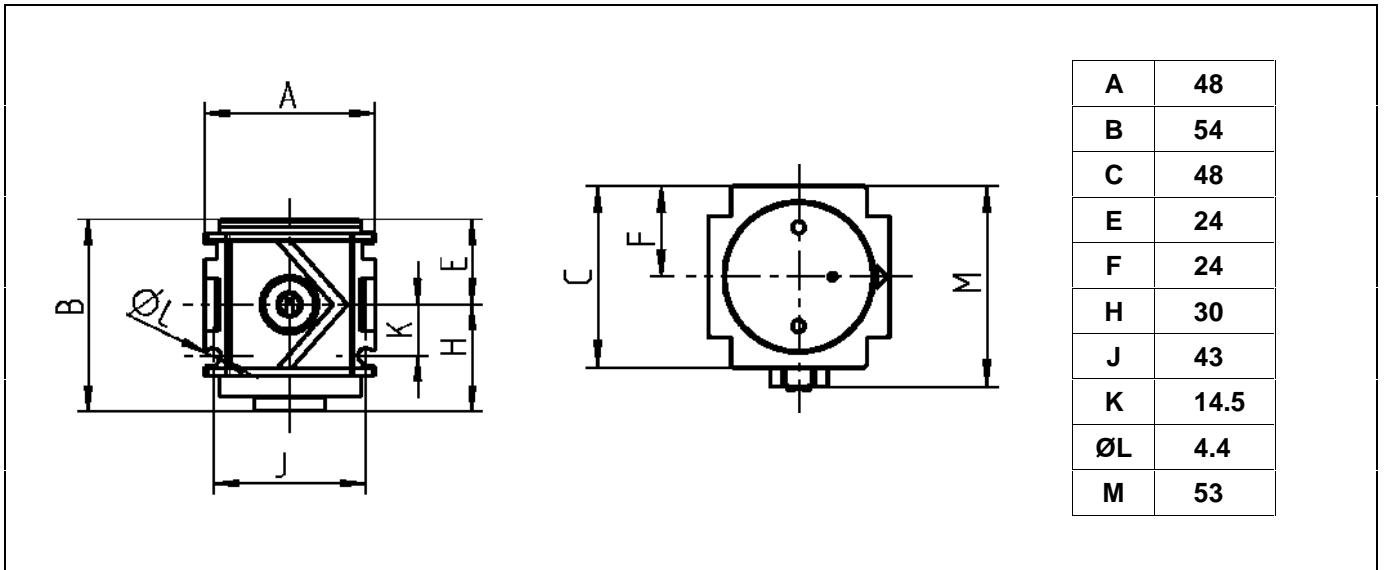
Materials

Part	Material
Head piece (housing)	Z 410
Seals	NBR
Cover	Al
Front plates	ABS

Accessories

Compact connecting set	1/4"	VZ 101
Compact connecting set	3/8"	VZ 102
Tee holder	(for VZ 101)	VZ 301
Tee holder	(for VZ 102)	VZ 302

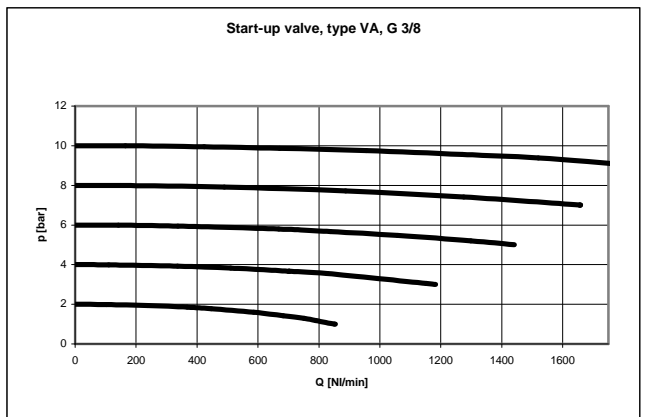
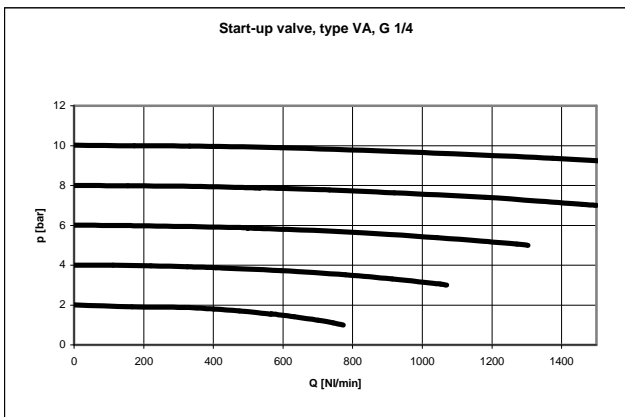
Dimensions [mm]



VA 22 VA 23

Flow rates

		VA 22	VA 23
Nominal flow p ₂ 6 bar / 1 bar	QN [l/min]	1200	1400



© Riegler 7-11

Interlocking / mounting

Variobloc

Size 1 G 1/4

Fixing bracket and fixing nut	630/1-B
Fixing bracket and two screws	VZ 718
Compact connecting set	VZ 101
Compact conn. set, incl. tee holder	VZ 201
Comfort connecting set	VZ 401

Size 1 G 3/8

Fixing bracket and fixing nut	630/1-B
Fixing bracket and two screws	VZ 718
Compact connecting set	VZ 102
Compact conn. set, incl. tee holder	VZ 202
Comfort connecting set	VZ 402

Size 2 G 1/2

Fixing bracket and fixing nut	
Fixing bracket and two screws	
Compact connecting set	
Compact conn. set, incl. tee holder	
Comfort connecting set	

Size 2 G 3/4

Fixing bracket and fixing nut	
Fixing bracket and two screws	
Compact connecting set	
Compact conn. set, incl. tee holder	
Comfort connecting set	

