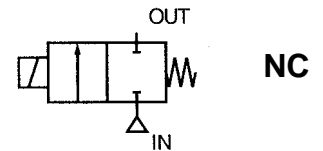




**Normally closed
Directly actuated**

G 1/8

**MV 1214
MV 1224**

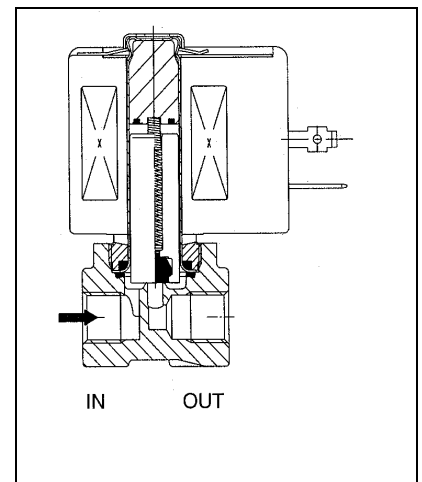


Description

- The valves do not require a minimum working pressure.
- The valves can be mounted in any position with no functional restrictions.
- The high-quality materials which are used for the valves and a series of extensive tests guarantee a long service life.
- The solenoid valves are in line with international standards.

General

Pressure difference	0 to 12 bar [1 bar = 100 kPa]
Permissible static pressure	150 bar
Maximum viscosity	65 cSt (mm ² /s)
Response time	5 to 25 ms



Medium	Medium temperature (1)	Sealant	Art No.	Ident No.
Air, gas, water, light oil	-25 °C to 80 °C	NBR	MV 1214	102819
	-15 °C to 100 °C	FPM	MV 1224	102820
	-25 °C to 80 °C	NBR	MV 1214 G	102823
	-15 °C to 120 °C	FPM	MV 1224 G	102824

(1) At temperatures below zero the medium may freeze and damage the valve.

Electrical data

Voltages (2) DC (=) 24 V - 12 V (Please use the suffix »G« to order DC valves
AC (~) 24 V/50 Hz - 110 V/50 Hz - 230 V/50 Hz

(2) Other voltages and 60 Hz frequency on request

Coil type	Pickup ~ (VA)	Power			Ambient temperature (1) (°C)	Degree of protection (with socket connector fitted)
		Holding		=		
		(VA)	(W)	(W)		
CM6-FT	34.0	15.6	6.0	9.7	-20 to +75	IP 65
On request: CM6-FB	30.0	22.5	9.0	15.3	-20 to +50	IP 65

Characteristics

Con- nec- tion	Nom. width (mm)	Flow coefficient Cv (m ³ /h) (l/min)		Working pressure difference (bar)						Coil type		Catalogue number		
				min.	max.				~					=
					Air/gas	Water	Oil<65cSt	~						
G				~	=	~	=	~	=	~	=	~	=	
1/8	3.2	0.30	5.0	0	11	5	12	5	9	5	CM6-FT	CM6-FT	MV 1214 MV 1224	MV 1214 G MV 1224 G

© Riegler 15-2

Design features

	MV 1214	MV 1224
Housing	Brass	Brass
Guide pipe	Stainless steel	Stainless steel
Armature of magnet and counter-armature	Stainless steel	Stainless steel
Springs	Stainless steel	Stainless steel
Valve seat	Brass	Brass
Seals	NBR	FPM
Valve disc	NBR	FPM
End ring	Copper	Copper
Insulation class (coil)	F	F
Electrical connection	ISO 4400; connector socket (PG 11P)	ISO 4400; connector socket (PG 11P)
Electrical design	IEC 335	IEC 335

Main spare parts

Order No.	Spare parts set	Diaphragms
MV 1214 MV 1214 G	302014 302058	Without
MV 1224 MV 1224 G	302014 V 302058 V	Without

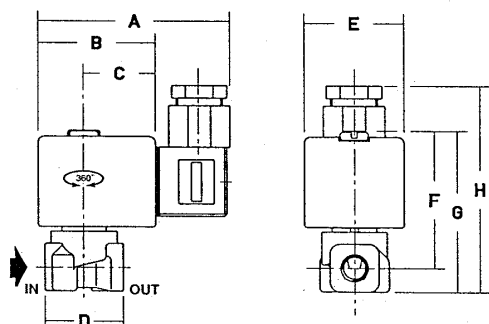
Coils

Order No.	Coils				Insulation class	Max. perm. operating temperature °C	Max. perm. temperature rise °C*	Max. perm. ambient temperature °C**
	~ (2)	V	= (3)	V				
MV 1214 MV 1224	400325-101 400325-107 400325-117	24 110 230	400325-141 400325-142	12 24	FT	155	80	75

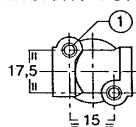
(2) Other voltages and 60 Hz frequency on request
 (3) Please use the suffix »G« to order DC valves

* Coil temperature after energising
 **Additional effect of the medium temperature within the value range stated in the catalogue

Dimensions [mm], weights [g]



ANSICHT VON UNTEN



Order No.	MV 1214	MV 1224
A	75	
B	45	
C	27	
D	30	
E	39	
F	56	
G	65	
H	81	
Weight (4)	300	

(4) Including coil and connector socket

Special designs (on request)

- Seals and valve disc made of EPDM (ethylene-propylene), PTFE (Teflon), CR (neoprene)
- Flameproof body in accordance with CENELEC and national standards
- Heavy-duty coil
- Assembly clamp for valves with a brass body
- Manual override
- Connector socket with LED and suppressor circuit

Installation

- Any mounting position
- Valve bodies supplied with two mounting holes
- Threaded connections: G = G (ISO 228/1)
- Other threaded connections on request
- Assembly and servicing instructions enclosed with each valve
- Spare parts and replacement coils (see above)