



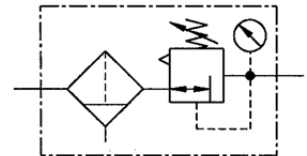
Filter regulators

Size 1

C 11
G 1/4

C 12
G 3/8

1.1 to 3 bar
1.2 to 6 bar
0.5 to 10 bar
0.5 to 16 bar



Characteristics

Type	C 11	C 12
Port	G 1/4	G 3/8
Pressure gauge port	G 1/4	
Type of construction	Diaphragm pressure regulator with self-relieving design Centrifugal filter Sintered filter element Special versions on request e.g. - Reverse flow port closed	
Input pressure p1	16 bar with plastic bowl 20 bar with metal bowl	
Input pressure p1 with fully-automatic drain	Max. 16 bar Min. 1.5 bar	
Control range p2	0.1 to 3 bar / 0.2 to 6 bar 0.5 to 10 bar / 0.5 to 16 bar	
Mounting position	Vertical, drain plug at bottom	
Mounting type	Bracket and nut, hole Ø 30.5 mm Bracket or two through holes	
Medium temperature	Max. 60 °C (other temperature ranges on request)	
Ambient temperature	Max. 60 °C (other temperature ranges on request)	
Filter rating	5 µm	
Bowl capacity	Max. 25 cm ³ condensate	
Condensate drain	Semi-automatic Fully-automatic on request	
Weight [g]	392 / 477 with pressure gauge	

Ordering information

Type Port Options Output press.

C XX - X X

Order example: C 11-K 10-HA

Port	
11	G 1/4
12	G 3/8
Options	
K-HA	Plastic bowl
M-SR	Metal bowl with sight glass
S	Bowl guard

Please use the suffix »A« to order fully-automatic drain

Description

- Block design
- Simple block mounting with other devices using conical clamps and half threads
- Joiner sets (**KP 11**) required for block mounting
- Pressure setting can be locked by pushing the knob down
- Flow direction indicated by arrows
- **Entry in direction of arrow**
- **Independent of inlet pressure**
- Pressure gauge Ø 40 mm included
- Pressure gauge can be mounted at both ends
- Lockable adjusting knob (**on request**)
- Filter rating acc. to ISO 4003, glass bead test
- Bowl guard can be retrofitted without tools

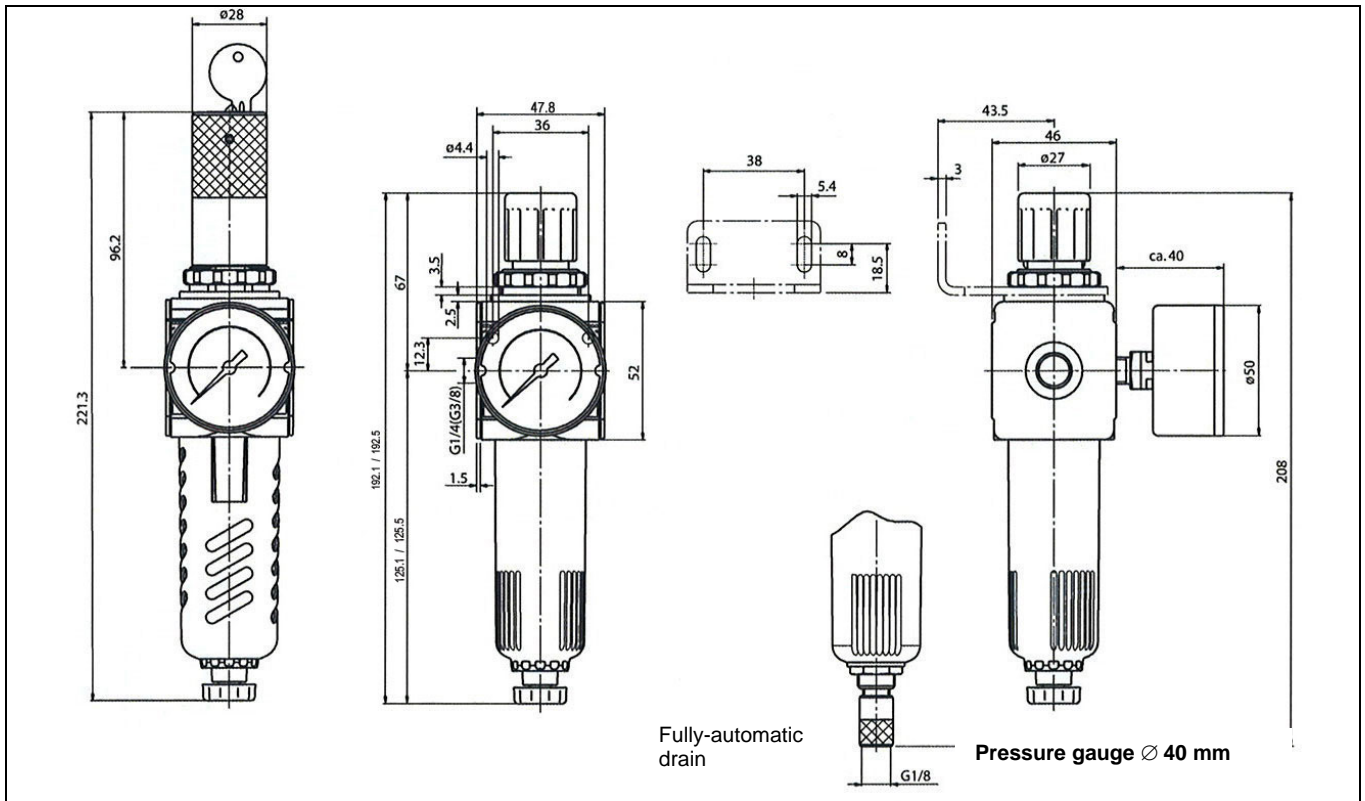
Main spare parts

Part	Part No.
→ Set of wearing parts - Diaphragm, cmpl. - Valve cone, cmpl. - O-ring 30x2	22.1811.4
Pr. gauge Ø 40 mm, G1/4 0 to 4 bar	110.01-KD
0 to 6 bar	110.02-KD
0 to 10 bar	110.03-KD
0 to 16 bar	110.04-KD

Materials

Part	Material
Head piece (body)	Z 410
Spring bonnet	POM-brass
Diaphragm	→ NBR-brass
Pressure spring	Galvanised steel
Valve cone	→ NBR-brass
Counter-pressure spring	Stainless steel
O-ring 30 x 2	→ NBR
Spring bonnet, lockable	POM-Al
Lock cylinder	Brass
Filter element 5 µm	PE
Condensate bowl	Polycarbonate
Baffle	PA

Dimensions [mm]

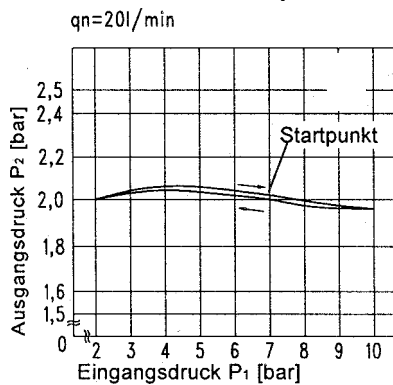


Flow rates

Art. No.		C 11	C 12
Output pressure $p_2 = 6$ [bar]	QN m^3/h	90	90
Nominal flow ($\Delta p = 1$ bar)	l/min	1500	1500

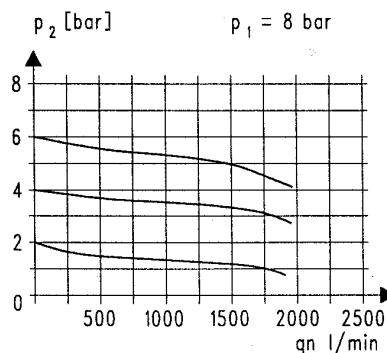
Hysteresis

Hysteresis of p_2 as a function of rising (falling) p_1 with a constant draw-off quantity QN 20 l/min
 Basic setting (starting point): p_1 : 7.0 bar
 p_2 : 2.0 bar



Flow characteristic

Control range 0.5 to 10 bar



Accessories

Designation	Order No.
Nut M30x1.5	R 11-55
Mounting bracket with nut R 11-55	MV 30
Mounting bracket with 2 screws, compl.	ZW 11
Joiner set	KP 11
Joiner set for narrow diverter block	KP 11 Z
Metal bowl with sight glass	MS 11 FS
Metal bowl with sight glass and fully-autom. drain valve	MS 11 FS-A
Polycarbonate bowl with semi-automatic drain valve	KS 11 F-FA
Polycarbonate bowl with fully-automatic drain valve	KS 11 F-A
Bowl guard	SK 11
Filter element 5 μm	611.6.905
Automatic drain valve	655.6.900