



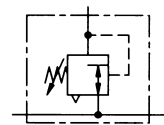
## Pressure regulating valve

Size 0

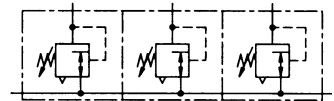
### RB 06

G 1/4

0.1 to 3 bar  
0.2 to 6 bar  
0.5 to 10 bar



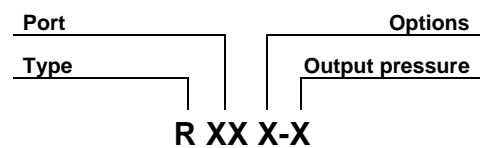
### Typical application



### Characteristics

<b>Type</b>	<b>RB 06</b>
<b>Port</b>	<b>G 1/4</b>
Pressure gauge port	G 1/8
Type of construction	Diaphragm pressure regulator with self-relieving design <b>Lockable adjusting knob on request</b>
Max. input pressure $p_1$	16 bar
Control range $p_2$	<b>0.1 to 3 bar / 0.2 to 6 bar / 0.5 to 10 bar</b>
Mounting position	Any
Mounting type	Panel mounting, hole $\varnothing 30.5$ Mounting bracket
Medium temperature	Max. 60°C
Ambient temperature	Max. 60°C
Weight [g]	260 / 310 with pressure gauge

### Ordering information



<b>Port</b>	
<b>06</b>	<b>G 1/4</b>
<b>Options</b>	
<b>K</b>	<b>Lockable adjusting knob</b>

Order example: RB 06 K-10

### Description

- Simple block mounting without tools using conical clamps (**Pin max. 12 bar**)
- Joiner sets (**KP 05**) required for block mounting
- Pressure setting can be locked by pushing the knob down
- Flow direction indicated by arrows
- **Entry in direction of arrow**
- **Independent of inlet pressure**
- Pressure gauge  $\varnothing 40$  included
- Lockable adjusting knob (**on request**)

### Main spare parts

<b>Part</b>	<b>Part No.</b>
→ <b>Set of wearing parts</b> - Diaphragm, cmpl. - Valve cone, cmpl. - O-ring 16 x 2	<b>22.1805.4</b>

### Materials

Part	Material
Head piece (body)	Z 410
Spring bonnet	POM-brass
Diaphragm	→ NBR-brass
Pressure spring	Galvanised steel
Valve cone	→ NBR-brass
Counter-pressure spring	Stainless steel
O-ring 16 x 2	→ NBR
Bottom screw	POM
Spring bonnet, lockable	POM-Al
Lock cylinder	Brass

### Accessories

Designation	Order No.
Nut M 30 x 1.5	R 11-55
Mounting bracket with nut R 11-55	MV 30
Joiner set(s) for block mounting with other devices	KP 05

